



Discover What's New for 2021

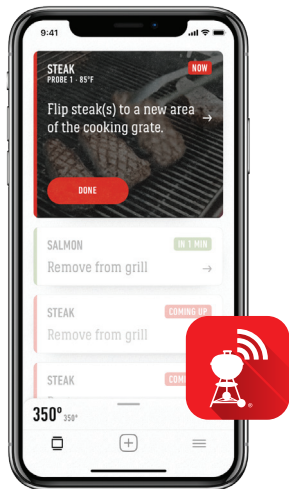




NEW: GAS GRILLS

SMART GRILLS

- » Upgraded smart tech package
- » Digital, real-time food temp & readiness countdowns on your phone and grill
- » Receive alerts when food has reached your desired doneness
- » Grill the perfect medium-rare steak, with real-time food monitoring
- » Amazon Alexa voice commands
"Alexa, when will my food be ready?"



SPIRIT® SMART GRILL SX-315

LP: 46502401 | MAP: \$799.00



GENESIS® II SMART GRILL EX-315

LP: 61015601 | MAP: \$999.00



GENESIS® II SMART GRILL EX-335

12,000 BTU-per-hour input side burner
9,000 BTU-per-hour input Sear Station burner
LP: 61016601 | MAP: \$1,199.00



GENESIS® II SMART GRILL SX-335

12,000 BTU-per-hour input side burner
9,000 BTU-per-hour input Sear Station burner
LP: 61006601 | MAP: \$1,299.00



NEW: PORTABLE GRILL

WEBER TRAVELER

- » Compact fold for minimal storage space and easily fits in the trunk of a car
- » Large grilling area so that the entire meal is ready to eat at the same time
- » Purposely designed to optimize gas usage
- » Low-to-high temp range grills everything from pancakes to seared steak
- » Easy to transport, so that it's always going where you go
- » Grill is attached to the cart so that you're up and grilling in no time



LP: 9010001 | MAP: \$299.00



NEW: CHARCOAL GRILLS

SUMMIT KAMADO

- » Dual-walled, air insulation allows for precise and quick temperature adjustments and consistently maintains low heat for all-day smoking
- » Steel construction and porcelain-enameled finish for long-term durability
- » RapidFire lid damper provides maximum air flow to quickly reach high heat
- » Low maintenance One-Touch cleaning system and removable high-capacity ash catcher for hassle-free clean up
- » Gourmet BBQ System ready, interchangeable cookware sold separately
- » Adjustable fuel grate allows for low and slow smoking and high-heat searing
- » Easy open hinged lid to seal in heat
- » Integrated tool hooks for convenience

Summit Kamado E6:

- » Bottom rack for added storage

Summit Kamado S6:

- » Large stainless-steel side-table for prepping and serving
- » Snap-Jet Gas Ignition System lights charcoal with the push of a button
- » Wire basket drawer and large bottom shelf to store tools & fuel
- » Includes fuel bag that hold 20lbs of charcoal

SUMMIT KAMADO S6

18501101 | MAP: \$1,699



SUMMIT KAMADO E6

18201001 | MAP: \$999





NEW: ACCESSORIES



7004 SMOKEFIRE WET SMOKE KIT

The Wet Smoke Kit enhances the smoky, wood fired flavor of food by adding moisture to the heat. It's specially designed to sit beneath the cooking grate so that you're not sacrificing grilling space, with the dual purpose of catching grease for easier cleanup.

MAP: \$19.99



7007 WEBER FUEL STORAGE BAG

The weather resistant Fuel Storage Bag keeps your wood and charcoal dry and BBQ ready! Its durable design holds up to 20 lbs of fuel and has a handle for easy carrying. When not in use, it folds flat for easy storage.

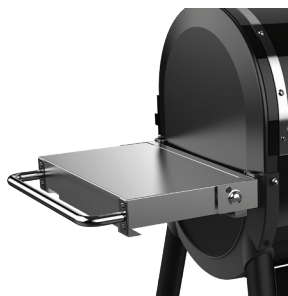
MAP: \$24.99



7005 WEBER CUTTING BOARD

The cutting board's grooved design catches meat juices for mess-free carving. It's the perfect size for prepping and serving on your Weber grill side table.

MAP: \$29.99



7001 SIDE TABLE

Prep, serve, and keep grilling tools within reach with the SmokeFire stainless steel side table. The side table adds over 200 square inches of work space, complete with a built-in bottle opener.

MAP: \$69.99



7002 FRONT SHELF (EX4)

The stainless steel front shelf adds over 350 square inches of extra work space. It accommodates up to 20 lbs of food and BBQ necessities including tools, platters, and cutting boards. The clips underneath are specifically designed to hold the upper cooking rack when not in use.

MAP: \$69.99



7003 FRONT SHELF (EX6)

The stainless steel front shelf adds over 350 square inches of extra work space. It accommodates up to 20 lbs of food and BBQ necessities including tools, platters, and cutting boards. The clips underneath are specifically designed to hold the upper cooking rack when not in use.

MAP: \$119.99



NEW: ACCESSORIES



3250 WEBER CONNECT STORAGE AND TRAVEL CASE

The Weber Connect case is ideal for protecting and storing your step-by-step grilling assistant when it's not in use. The inside is lined with high-quality EVA foam material designed to securely fit the Weber Connect Smart Grilling Hub, USB charging cord, ambient probe and up to 4 additional probes. The outside of the case can easily be wiped clean.

MAP: \$29.99



3254 WEBER CONNECT 6-PIECE MOUNTING KIT

Keep your Weber Connect Smart Grilling Hub right by your side as you grill. With easy assembly, the Mounting Kit attaches to charcoal, smoker and gas grills and securely holds the Weber Connect during your cooks. The kit also includes a storage bag to keep the mounting pieces together.

MAP: \$29.99



8859 GBS DUTCH OVEN DUO

This multi-purpose cookware provides endless possibilities on the grill. The cast iron 7.25 Qt Dutch oven provides even heat distribution and retention for tender roasts or flavorful soups and stews. The dual-function lid converts to a flat griddle that toasts sandwiches or perfectly cooks chicken breasts and vegetables. The porcelain enamel finish makes it easy to clean and the two pieces stack together to save space when stored.

MAP: \$129.99



8860 GBS GRILL & GRIDDLE STATION

There's no need to choose between grilling or searing. You can do both with one piece of durable cookware. This cast iron combo saves time at the grill by preparing more food at once. Grill crispy bacon while making evenly cooked pancakes or sear steak while sautéing vegetables for fajitas. The porcelain enamel finish makes it easy to clean and the stackable pieces save space when stored.

MAP: \$79.99