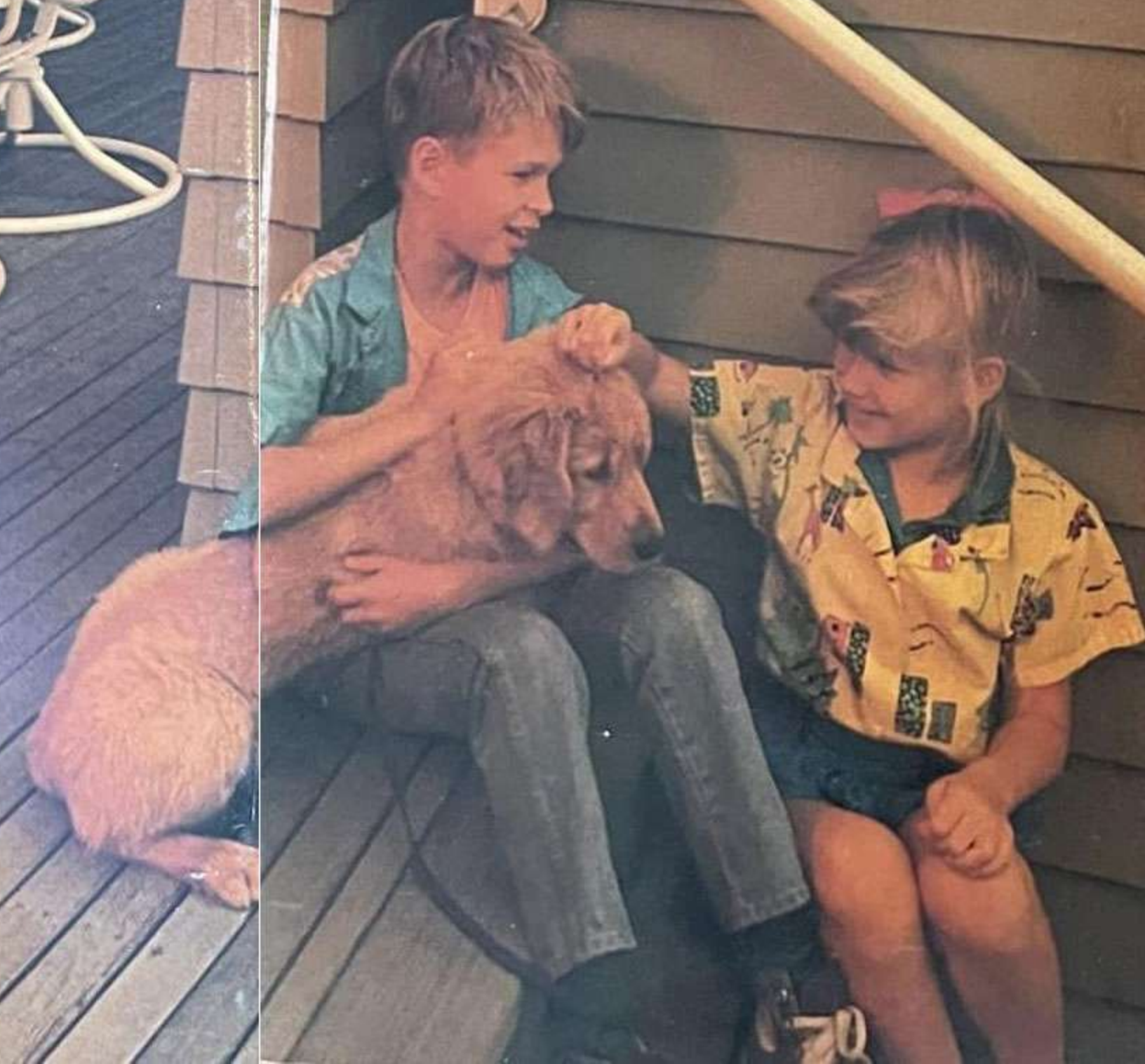


1989



 **weber**  
It's great outdoors.

FOR THE NAME OF YOUR WEBER SALES REPRESENTATIVE, CALL 1-800-323-7598  
Weber-Stephen Products Co., 200 East Daniels Road, Palatine, IL 60067.



 **weber**  
It's great outdoors.



## GENESIS® GAS BARBECUES



*Madame says to me, "We have a new barbecue and we would like to have a little party on the patio, perhaps salmon would be nice." I say to her, "Madame, with a barbecue the flame will shoot up and in an instant your salmon will be black as night. Let me cook in the kitchen."*

*She says, "On this barbecue, you can control the flame just as in the kitchen." So I think, and I say, "You will want a sauce, perhaps a velouté, and how am I to prepare that on a barbecue?"*

*"There's a gas burner on the side of this barbecue which will do nicely," she says. So it appears that I am stuck, but then I say, "Madame, outside my toque will blow off and I cannot cook bareheaded!"*

*She says nothing. Just walks away.*

*I cook bareheaded.*



Genesis Gas Barbecues bring out the chef in any cook – offering more versatility and control than any other gas barbecues on the market.





### CEDAR WORK SURFACES

All Genesis Gas Barbecues have at least one workspace made of sturdy cedar which can be removed and used as a serving tray. Some models have additional work surfaces or swing-up tables, and all include a cedar hood handle which remains cool while cooking.



### OUR PATENTED FLAVORIZER® SYSTEM FOR GREAT TASTE

Charcoal grills give great flavor but not everyone finds them easy to control. Ordinary gas grills are easier to control but their lava rocks collect grease, causing flare-ups.



Figure 1

These two facts led us to invent our revolutionary, exclusive Flavorizer System for perfectly controlled grilling with real cookout flavor—without flare-ups.

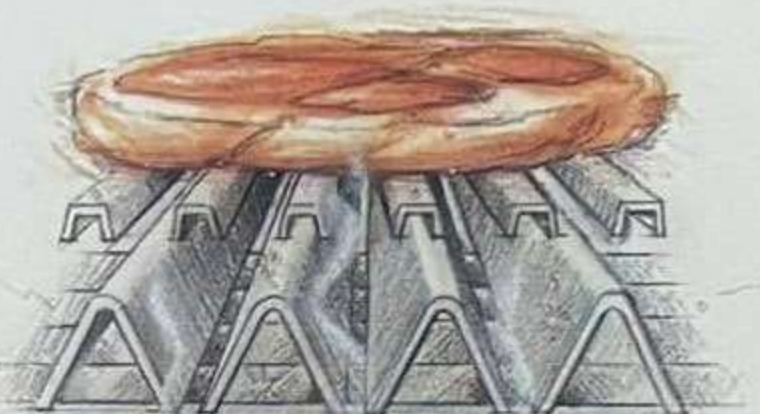


Figure 2

The key is the Flavorizer Bars laid criss-cross above the burners (fig.1). They heat evenly so that when juices drip, they vaporize instantly (fig.2), putting deep-down barbecue flavor back into the food (fig.3).



Figure 3

The result is great outdoor flavor with no hot or cold spots, no charring—just meat cooked the way you want it, the first time and every time.

### MORE STANDARD FEATURES INCLUDING 5-YEAR WARRANTY

Warrantied for five full years on all parts except the following: three years on burners, valves and regulators, one year on cooking grills, Flavorizer Bars and tank.

Frame is heavy-gauge steel construction welded by state-of-the-art robots for consistent quality, and coated with highest quality rust-resistant Polyester Urethane Enamel finish.

Cooking chamber is a combination of porcelain-on-steel and cast aluminum, sealed with a coating to withstand high temperatures. Burners are rust-resistant stainless steel; there are three on all models except Genesis Junior.

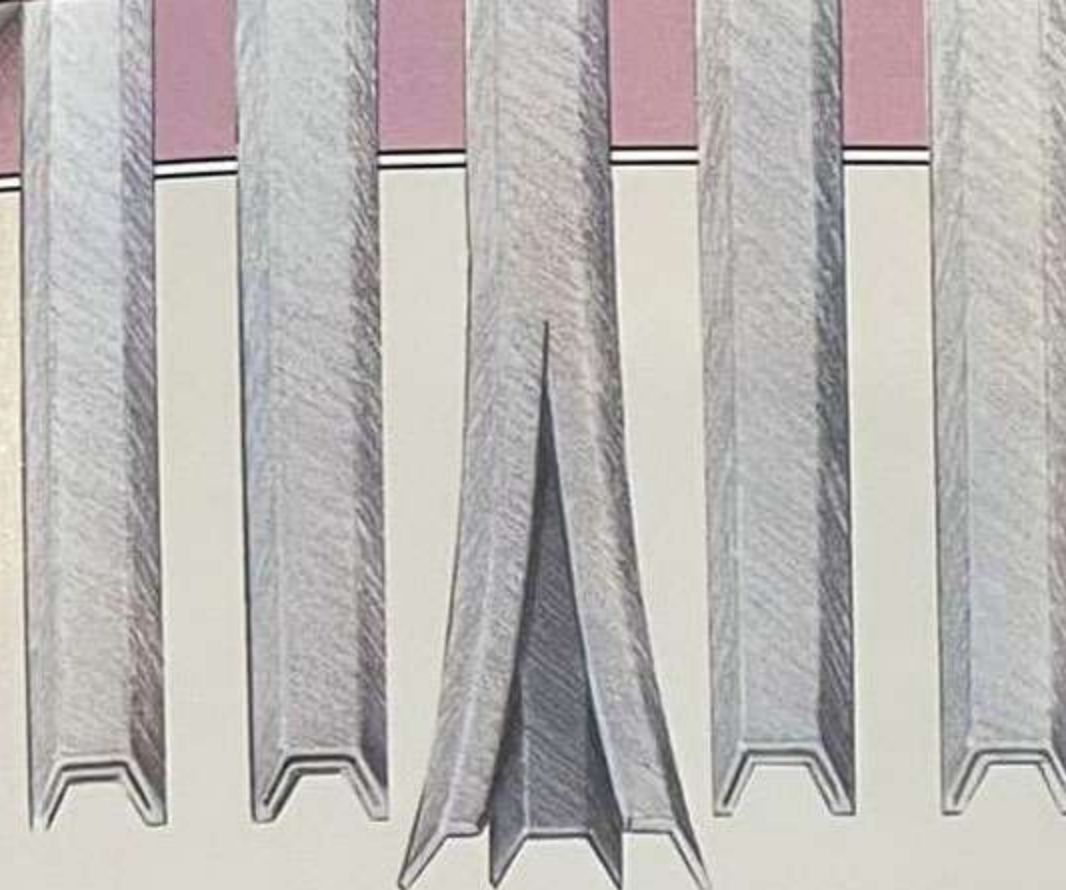
And all Genesis models include a warming rack, stainless steel hanging hooks for utensils, large rugged wheels for easy portability and our full-color Weber Gas Barbecue Cookbook.

### FUNNEL-SHAPED TRAY MAKES CLEAN-UP EASIER

Every part of a Genesis Gas Barbecue is designed to make clean-up convenient.

There is a funnel-shaped bottom tray in place of the bottom of the grill, to draw grease away from the burners and into a porcelainized catch pan that can be lined with a disposable aluminum liner.

Both trays are removable for easy cleaning, making Genesis Gas Barbecues the easiest grills to maintain ever engineered.



### EASY-TO-CLEAN PORCELAINIZED STEEL

Both the cooking grills and the Flavorizer Bars are porcelain-on-steel to resist rust, and—because food has a hard time sticking to porcelain—easy-to-clean.



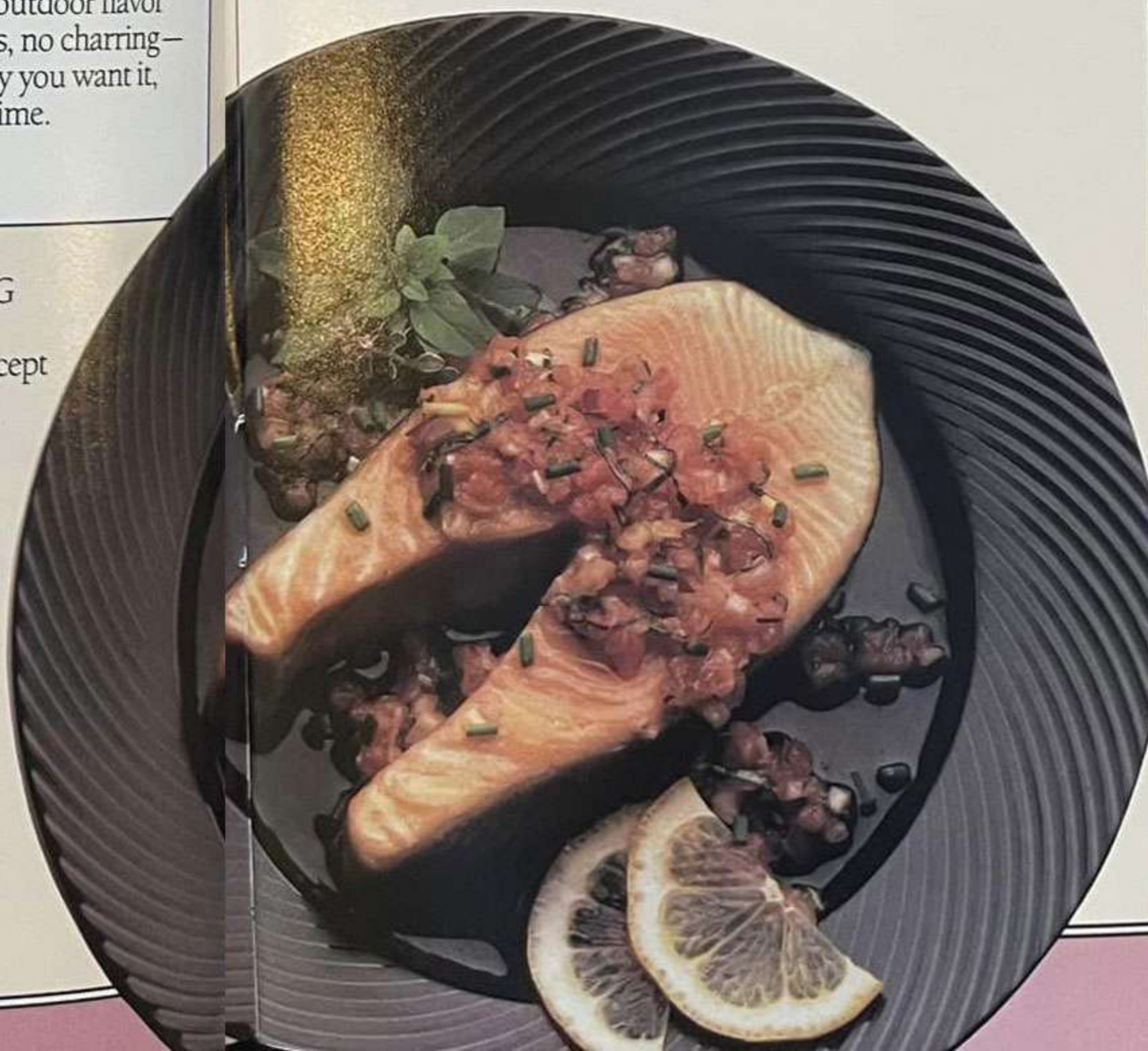
DIRECT



INDIRECT

### DIRECT AND INDIRECT COOKING

The choice of direct cooking (for searing steaks, hamburgers, etc.) or indirect cooking (for roasting larger items like ham, roast or turkey) is a Weber hallmark. Use all of the burners for direct cooking, or light only the outside burners for indirect cooking—heat reflects off the interior of the hood to create convection cooking for juicier food.



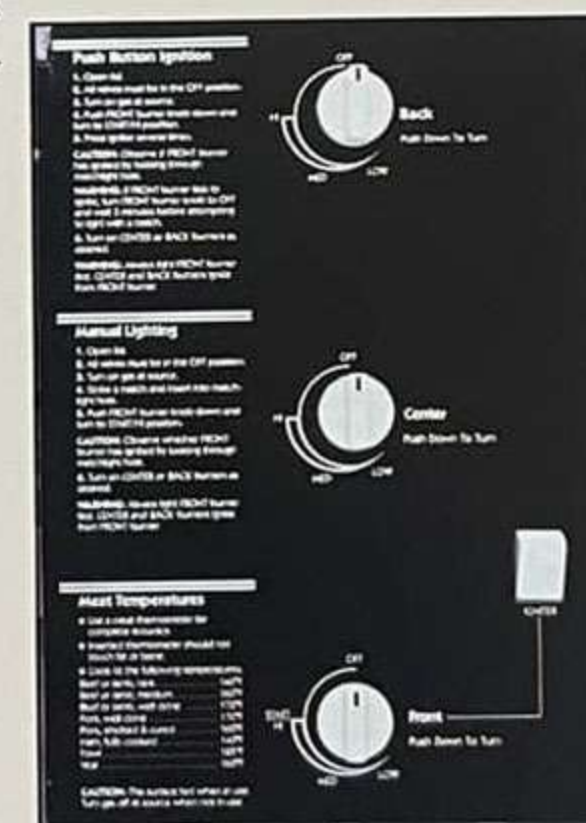
### Genesis Gas Grills

Lift the hood on a Genesis® Gas Barbecue and you know instantly that it is an uncommonly well-built product, solidly constructed for years, even decades, of happy use. But more than that, the Genesis line represents the culmination of everything we know about barbecuing.

A collection of features, a combination of gas grill convenience and real cookout flavor that make the Genesis line the finest gas barbecues we have ever made.

And at a variety of price points to suit every kind of customer.

On this page are a few of the reasons that more and more people are falling in love with these exceptional barbecues.



### COMPLETE CONTROL OVER COOKING

With a touch, our patented Crossover™ Ignition System instantly lights the burners. Then, adjust the flame to the proper temperature with the control knobs. The instructions are there, sealed in porcelain that won't scratch, rust or fade.

### AN ACCURATE GAS GAUGE

L.P. gas models include an accurate scale that measures the amount of gas in the tank, not by pressure, but by the hanging weight of the tank—so you need never run out of cooking gas again.







### Genesis Gas Barbecues

The introduction of the Genesis® Gas Barbecue line has been a tremendous success. Consumer reception to these top-quality grills has been little short of sensational! Once people see the ease of cooking and taste the results of our patented Flavorizer® System, they're hooked.

Now Weber offers our most exclusive retailers an opportunity to pursue even greater profits with the Genesis line. Two new Genesis Gas Barbecues with added features and contemporary styling to make them appeal to the most demanding customers, the ones who won't settle for anything less than the best.

They're not the kinds of grills that you'll find marked down or sold by the truckload. Instead, they're designed especially for you, the kind of retailer who knows his or her customers by name and has earned their trust over the years. Grills whose high standards project the image your store possesses. And whose high profit opportunities reward the attention you give your customers.

Presenting the Genesis 4 and Genesis 5 Gas Barbecues.

### GENESIS 5 GAS BARBECUE

With the addition of such extra and very useful features as a range-style side burner for side dishes, sauces, coffee, etc., and an enclosed storage compartment, the Genesis 5 is truly the finest gas barbecue we've ever made. Your choice of grey or burgundy hood with pinstripes. Available in L.P. gas models with 20-lb. tank and our hanging weight scale, or natural gas models with a 12-foot hose, both with convenient quick-disconnect.

- 36,000 BTU heat output from main cooking chamber
- 8,000 BTU output from range-style side burner with separate ignitor and control
- Enclosed storage area below grill with tempered glass doors, ideal for protecting wood chips, barbecue mitts or other items from the elements
- Steam-N-Chips™ Smoker for true American Smokehouse flavor.
- Dual-Purpose Thermometer reads either temperature of cooking chamber or doneness of the food
- Two warming areas, including one Weber Warm-Up™ Basket in the lid and a Warming Rack. 420 square inches of primary cooking area plus 215 square inches on the warming racks for a total of 635 square inches of cooking surface
- Two grey-stained cedar swing-up work tables, one removable grey-stained cedar work surface plus one removable porcelain serving tray
- Weber Flame Check™ Safety System
- Locking front casters

#496001 Grey L.P.      #493001 Burgundy L.P.  
#496401 Grey Natural      #493401 Burgundy Natural

### GENESIS 4 GAS BARBECUE

The Genesis 4 Gas Barbecue contains everything a barbecuer needs for complete convenience. In addition to such Genesis features as our patented Flavorizer System and Crossover™ Ignition, it features porcelainized side trays and two cedar swing-up tables. Your choice of grey or burgundy hood with pinstripes. Available in L.P. gas models with 20-lb. tank and our hanging weight scale, or natural gas models with a 12-foot hose, both with convenient quick-disconnect.

- 36,000 BTU heat output
- Steam-N-Chips™ Smoker, for true American Smokehouse flavor.
- Dual-Purpose Thermometer reads either temperature of cooking chamber or doneness of food.
- Two warming areas, including one Weber Warm-Up™ Basket in the lid and a warming tray. 420 square inches of primary cooking area plus 215 square inches on the warming areas for a total of 635 square inches of cooking surface.
- Two grey-stained cedar swing-up work tables, two removable porcelain serving trays, two grey-stained removable cedar work areas and a grey-stained cedar bottom shelf.
- Weber Flame Check™ Safety System
- Locking front casters

#486001 Grey L.P.      #483001 Burgundy L.P.  
#486401 Grey Natural      #483401 Burgundy Natural





GENESIS® 3 GAS BARBECUE



GENESIS® 2 GAS BARBECUE



GENESIS® 1 GAS BARBECUE



GENESIS® JUNIOR GAS BARBECUE

**3** The Genesis 3 Gas Barbecue is aimed squarely at the customer who wants all the features. In addition to such Genesis features as our Flavorizer® System for real cookout flavor, the Crossover™ Ignition System and direct or indirect cooking, it includes a range-style side burner (see inset) for greater convenience.

Your choice of red, black or chocolate hood colors. Available in L.P. gas models with hanging weight scale and 20-lb. tank, or natural gas models with a 12-foot hose and convenient quick-disconnect.

- 36,000 BTU heat output from main burners
- 8,000 BTU output range-style side burner with separate control and ignitor
- 540 square inch primary cooking area (420 square inch grill plus 120 square inch warming rack)
- Dual-Purpose Thermometer measures temperature of cooking chamber or doneness of food (patent pending)
- Swing-up cedar work table plus removable cedar work surface and cedar bottom shelf

#471001 Jet Black L.P. #471401 Jet Black Nat.  
 #474001 Red L.P. #474401 Red Nat.  
 #479001 Chocolate L.P. #479401 Chocolate Nat.

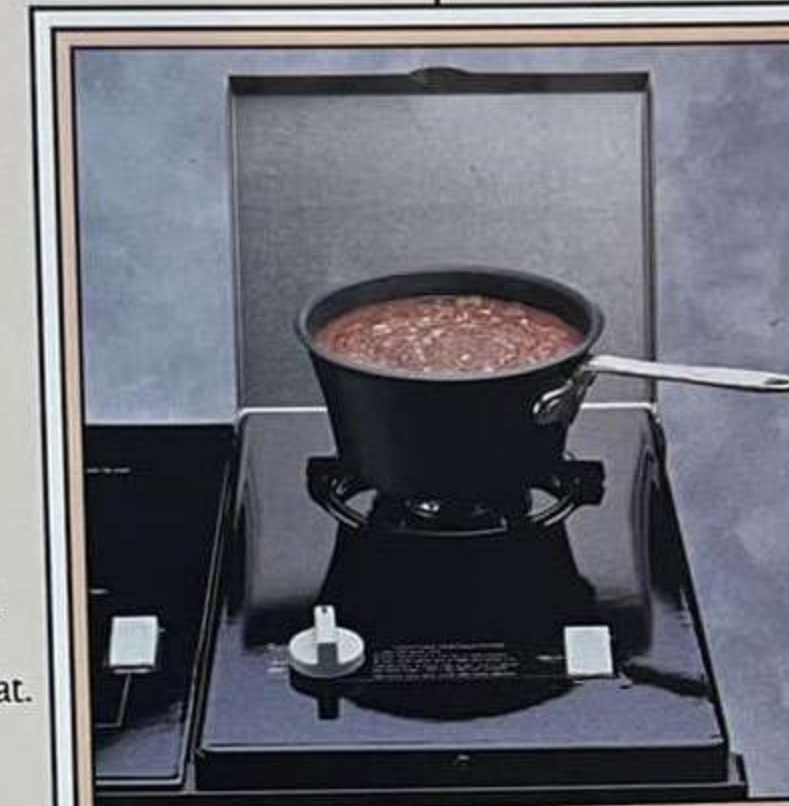
**2** An intermediate model, the Genesis 2 Gas Barbecue has enough extra features to seem like the top of the line.

It offers plenty of cedar workspace for preparing food, as well as the customary Genesis features. Your choice of red, black or chocolate hood colors. All are available in L.P. gas models with hanging weight scale and 20-lb. tank, or natural gas models with a 12-foot hose and convenient quick-disconnect.

- 36,000 BTU heat output
- 540 square inches of total cooking area (420 square inches of primary cooking area plus 120 square inches of warming rack)

- Dual-Purpose Thermometer measures either cooking chamber temperature or doneness of food.
- Swing-up cedar work table, two removable cedar work surfaces plus cedar bottom shelf

#431001 Jet Black L.P.  
 #431401 Jet Black Natural  
 #434001 Red L.P.  
 #434401 Red Natural  
 #439001 Chocolate L.P.  
 #439401 Chocolate Natural



*A side burner is a great help when it comes to preparing side dishes, sauces, coffee, etc. without having to run in and out of the house. Ours has a porcelain-on-steel surface with stainless steel cover and its own separate controls. It's a Weber® innovation. (Standard on Genesis 3 and 5 Gas Barbecues; available as an option on Genesis 2 and 4 Gas Barbecues.)*

**1** The Genesis 1 Gas Barbecue is an affordable entry into the world of Genesis convenience and features for customers looking to step up from other gas or charcoal models. Your choice of red, black or chocolate hood colors. Available in L.P. gas models with hanging weight scale and 20-lb. tank, or natural gas models with a 12-foot hose and convenient quick-disconnect.

- 36,000 BTU heat output
- 540 square inches of total cooking area (420 square inches of primary cooking area plus 120 square inches of warming rack)
- Removable cedar work surface, heavy-gauge steel wire side condiment holder, plus heavy-gauge steel wire bottom storage rack

#411001 Jet Black L.P.  
 #411401 Jet Black Natural  
 #414001 Red L.P.  
 #414401 Red Natural  
 #419001 Chocolate L.P.  
 #419401 Chocolate Natural

**JUNIOR**  
 For people who want Genesis features but are short on space, the Genesis Junior Gas Barbecue provides the answer. The perfect size for a small patio or apartment balcony, it offers all the standard Genesis features, as well as some of the extra features found on the Genesis 2 and 3 Gas Barbecues.

Your choice of red, black or chocolate hood colors. Available in L.P. gas models with hanging weight gauge and 20-lb. tank, or natural gas models with a 12-foot hose and convenient quick-disconnect.

- 22,000 BTU heat output
- 400 square inches of total cooking area (310 square inches of primary cooking area, plus 90 inches of warming rack space)
- Two long-lasting stainless steel burners
- Crossover™ Ignition System and dual flame controls for direct and indirect cooking
- Dual-Purpose Thermometer measures either cooking chamber temperature or doneness of food
- Swing-up cedar work table and bottom cedar storage area

#141001 Jet Black L.P. #141401 Jet Black Natural  
 #144001 Red L.P. #144401 Red Natural  
 #149001 Chocolate L.P. #149401 Chocolate Natural



## CHARCOAL AND PORTABLE GRILLS

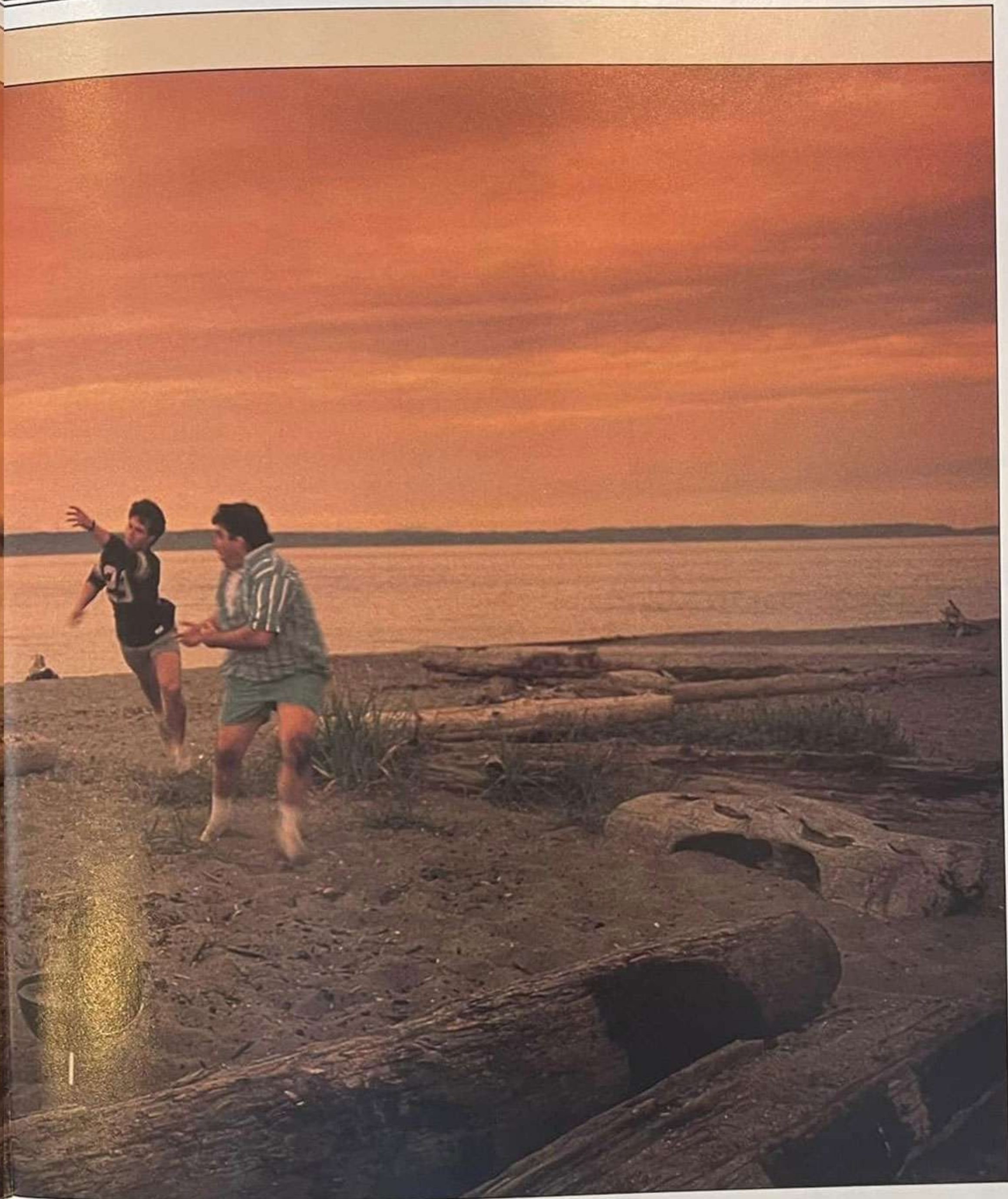


Bert, Mr. Ex-College-Jock with the fancy car, thinks he's going to walk all over us. Well, he may have the muscle, but there's more to football than muscle. There's strategy.

First I get the roast beef going before the game, so the smell of good, slow barbecuing fills the air. It turns my men to animals, because they know the winning team eats first—and the losing side has to serve.

Then we concentrate on Bert. His one weakness is that car. So just before the snap I say "Jeez, look how that truck plowed into that red Thunderbird." Now he knows I'm lying, but he can't help but look. The sap fumbles, and we recover.

Final score, Brains 26, Brawn 20. Bert serves the chow. You know, I think that's about the only way to make a barbecued roast beef sandwich taste any better.



Everybody loves the all-American taste of a cookout—and now we've got more ways than ever to make them happen.



**N**ow there's a way to take customers who are shopping on a budget and direct them away from cheap imitations — making lifelong Weber customers out of them instead. It's the Weber® Bar-B-Kettle™ Grill, a basic charcoal model with many of the features of our more expensive models. But we haven't turned our back on the original classic American grill — far from it! The Weber® One-Touch® Kettle remains as popular a seller as ever.

**AMERICA'S FAVORITE ONE-TOUCH KETTLE**  
 This classic bestseller stays at the top thanks to the patented One-Touch System and our patented, improved ash catcher. The bowl and lid are made of heavy-gauge steel sealed with rust-resistant porcelain enamel, standing on no-rust aluminum legs and rugged wheels crackproof to -40 degrees F. Available in two sizes: the original 22½-inch size offers 397 square inches of grill area, big enough for turkeys, platters of steak or chicken, and vegetables, while the smaller 18½-inch size offers a spacious 269 square inches of cooking area. Both come with our free cookbook full of great ideas. Packed in a full-color carton.

**THE NEW BAR-B-KETTLE**

The same unique, trademarked shape that says Weber. Direct or indirect cooking capability. Solid construction — bowl and lid are made of steel sealed with porcelain enamel to resist rust, fading or burning, while the cooking grill is rust-resistant heavy, bright nickel-plated steel. And it's backed by a one-year limited warranty. Available in both 22½-inch and 18½-inch sizes. Includes free cookbook.

	Jet Black	Red	Chocolate
One-Touch/22½"	#71001	#74001	#79001
One-Touch/18½"	#31001	#34001	#39001
Bar-B-Kettle/22½"	#61001		
Bar-B-Kettle/18½"	#21001		

Only Weber has our easy One-Touch® System. In one move, vents are adjusted and ashes are cleared with no mess.



The versatile Weber Kettle allows cooking with either the Direct or Indirect Method.

**DIRECT COOKING**

Burgers, steaks or chops are simply placed directly over a single layer of charcoal, absorbing the full searing heat of the coals. Cooking with the lid on helps food retain natural juices and prevents flare-ups.

**INDIRECT COOKING**

A drip pan is placed under whole poultry, ham or roasts, and charcoal is arranged on either side of the drip pan. With the lid on and vents open, natural convection is created — ensuring faster cooking and juicier meats.

Our Dual-Purpose Thermometer on the One-Touch Plus, allows you to read the cooking temperature inside the grill at any time — or use the probe to easily check the doneness of meat.



Our stainless steel Char-Basket Fuel Holders make direct and indirect cooking even easier. Join them for intense direct cooking or separate them for indirect cooking, using either charcoal or wood.

**ONE-TOUCH PLUS KETTLE**

For customers who want the ultimate in charcoal grills, there is the Weber® One-Touch® Plus™ Kettle.

In addition to the solid construction and features of the Weber One-Touch, the One-Touch Plus Kettle includes a Tuck-Away™ Lid Holder (patent pending) for greater convenience while cooking, our Dual-Purpose Thermometer (patent pending) and our Char-Basket™ Fuel Holders (patent pending) to make charcoal or wood cooking easier than ever before.

The 22½-inch grill offers a big 397 square inches of cooking area for turkeys, roasts or other large items with room to spare for vegetables. Packed in a full-color carton.

- #91001 Jet Black
- #94001 Red
- #99001 Chocolate



BAR-B-KETTLE GRILL

ONE-TOUCH KETTLE



**J**umbo Kettles satisfy the needs of customers who want to cook large quantities — from people who entertain on a grand scale to churches, schools and other organizations. They won't be found in every store...make sure your customers see them and know they can have Weber® quality in a big grill.

**26¾ INCH KETTLE**

For large families or smaller groups, this kettle is the right size. Now with the exclusive convenience of our patented One-Touch® cleaning/venting system and our improved patented ash catcher design for easier ash disposal.

Available in black. 32 inches high. #81001



**THE RANCH™ KETTLE**

With nearly eight square feet — 1104 square inches — of cooking space, the Ranch is a giant-sized kettle suited for big groups or caterers. It's 37½ inches across, 27 inches high, and features the same solid construction and direct and indirect cooking capability as all Weber grills. Available in black. #60001



**S**mokey Mountain Cooker™ Smoker can help you make the most of it. Its prestige and quality appeal to food trendsetters and adventuresome chefs alike.

**Smoker**



**SMOKEY MOUNTAIN COOKER SMOKER**

The Smokey Mountain Cooker Smoker is made of heavy-gauge steel sealed inside and out with rust-resistant black porcelain enamel that won't rust, burn, or stain. And there's also a solid wood handle, heavy, bright nickel-plated grills, a porcelain-on-steel water pan, and a rust-resistant aluminum fuel door for added convenience.

Best of all, this durable product is backed by our five-year limited warranty. The Weber Smokey Mountain Cooker Smoker. The most expensive smoker on the market...and worth it. 18½ inch diameter. #2880





#### SMOKEY JOE® PORTABLE GRILL

The best-selling Weber grill (with bright-finished ash catcher and legs) is durable, rust-resistant, and portable.

The grill has removable legs, porcelain-on-steel finish inside and out, heavy, bright nickel-plated cooking grill, and a five-year warranty. Full-color carton. 14½ inch diameter, 18¼ inches high. 150 square inches cooking area. Jet Black. #10001

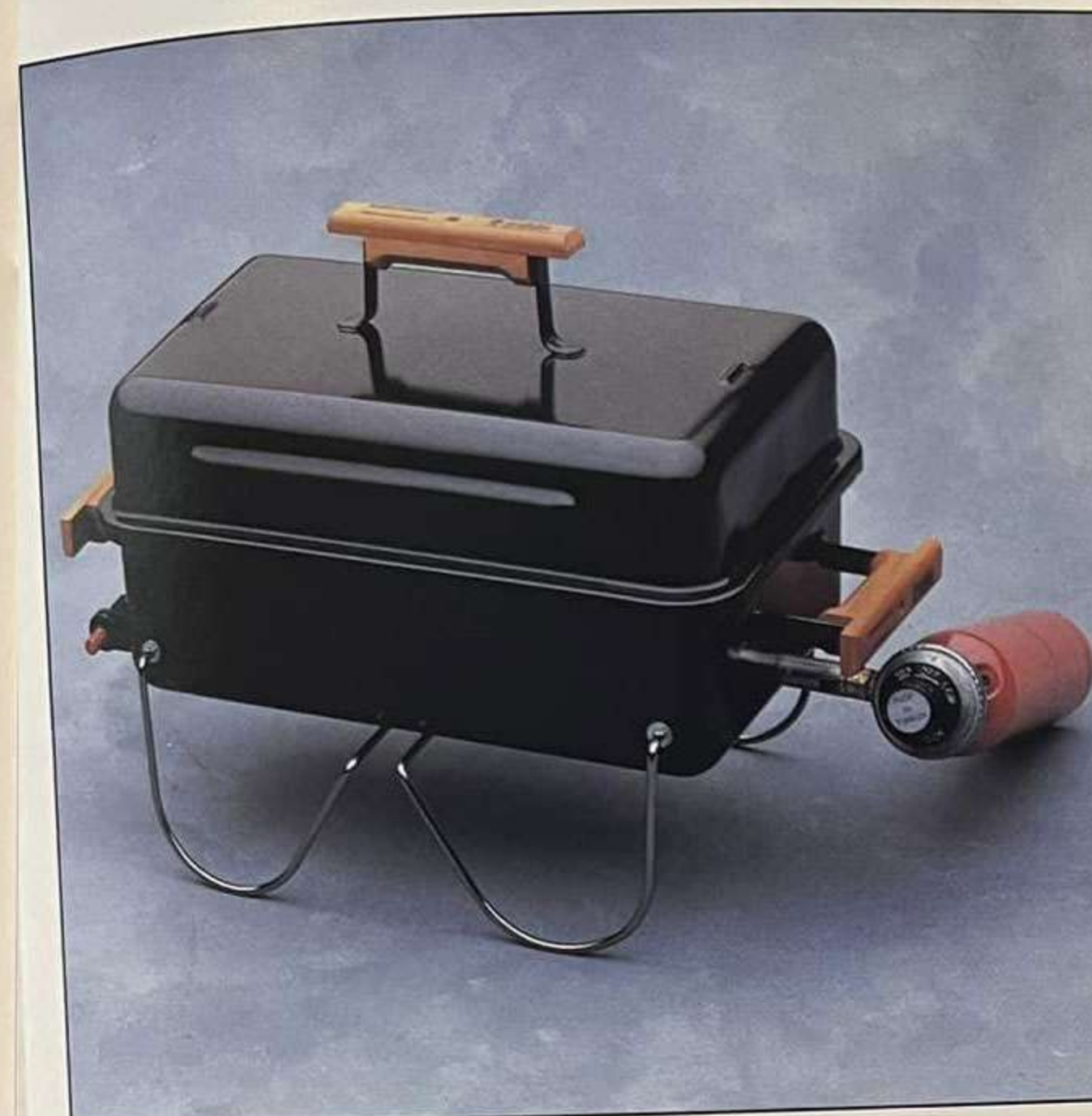


#### PORTABLE TABLE TOP GAS GRILL

Now with the exclusive Weber Flavorizer® System (patent #4,627,408), for great outdoor taste virtually without flare-ups, plus a convenient push-button ignitor.

Legs fold up to lock cover in place for easy carrying and storage. Porcelain-on-steel finish inside and out. Heavy, bright nickel-plated 160 square inch cooking grill.

Uses disposable L.P. cylinders, or can be adapted to refillable tanks (Hose Adaptor #871015). Full-color carton. Tank not included. Jet Black. #1530



**I** Go-Anywhere® Grills  
t's that easy. Weber® charcoal and gas grills you can pick up and take anywhere—a picnic, a ballgame, the mountains, the beach, a family outing, a romantic rendezvous. It's no wonder they're big sellers.

#### PORTABLE TABLE TOP CHARCOAL GRILL

A popular charcoal grill for any tight space. Legs fold to lock cover in place for easy carrying and space-saving storage.

Solidly engineered, with no nuts or bolts to rust. Heavy, bright nickel-plated cooking grill with 160 square inch cooking area and a rust-resistant air damper system. Five-year limited warranty. Full-color carton. Jet Black. #121001

**A**nd for our most exclusive merchants, we now offer a new fourth Go-Anywhere Grill: the Smokey Joe® Tuck-n-Carry™ Grill, with extra features to make it a new favorite of your most quality-conscious customers.

#### SMOKEY JOE TUCK-N-CARRY GRILL

Now there's a premium version of the classic Smokey Joe Grill with the trademark Weber kettle shape and solid Weber construction.

In addition to offering the direct and indirect cooking our larger kettles are known for, this Smokey Joe comes with a zinc-plated lid lock (patent #4,535,749) which holds the top on while carrying, and lowers to serve as a convenient lid holder.

Lid and bowl are heavy-gauge steel sealed with porcelain enamel to prevent rust, fading and burning. Legs are zinc-plated steel. The grill is backed by a 5-year limited warranty. 14½ inch diameter, 16¾ inches tall. 150 square inches of cooking surface. Jet Black. #40001



## OUTDOOR AMENITIES



"Come on, it's not a wilderness, it's a beautiful night."  
"Any place more than 500 feet from a delicatessen is wilderness. Aren't there mountain lions and mountain tigers and things like that out here?"  
"There's no such thing as mountain tigers. And if there were, the fire would scare them away. Judy, show her the yearbook."  
"A yearbook? Oh no, I can't look—let me see. Hmmmm. You don't look so bad. In fact, you look pretty good—aaaaaah! My hair never looked like that!"  
"Everyone's hair looked like that."  
"It's a fake. I never looked like that. I never looked—I never looked that young. Were we ever really that young?"  
"We still are."  
"Boy, that's terrible. What a picture. This fire isn't just for scaring off mountain tigers, it's for burning this picture before anyone else sees it."

Outdoor Amenities from Weber® help tame the wilderness with exciting ideas for outdoor lifestyles.





#### A SAFE WAY TO ENJOY A FIRE—ANYWHERE

Similar to the custom-made fire pits seen in West Coast yards, the Weber® FirePlace (Patent # 293,191) becomes a focus of outdoor entertaining. The 29½ inch diameter FirePlace holds plenty of wood and the cone-shaped top deflects the heat out to the surrounding area.

The heavy-gauge steel construction with rust-resistant porcelain enamel finish is backed by our five-year warranty.

The Weber FirePlace is perfect for year-round selling. And comprehensive support, including the free point-of-sale tent card shown, assures sell-through. Jet Black. #2710



#### A GLEAMING LIGHT IN THE NIGHT

The Weber® Torch eliminates the most common problems of kerosene torches. A special snuffer cap protects both the wick and the fuel supply from rain, and it's secured with a chain, so it won't get lost.

The support posts are made of sturdy, one inch diameter steel. And a unique heavy-duty ground anchor keeps the torch stable in any soil.

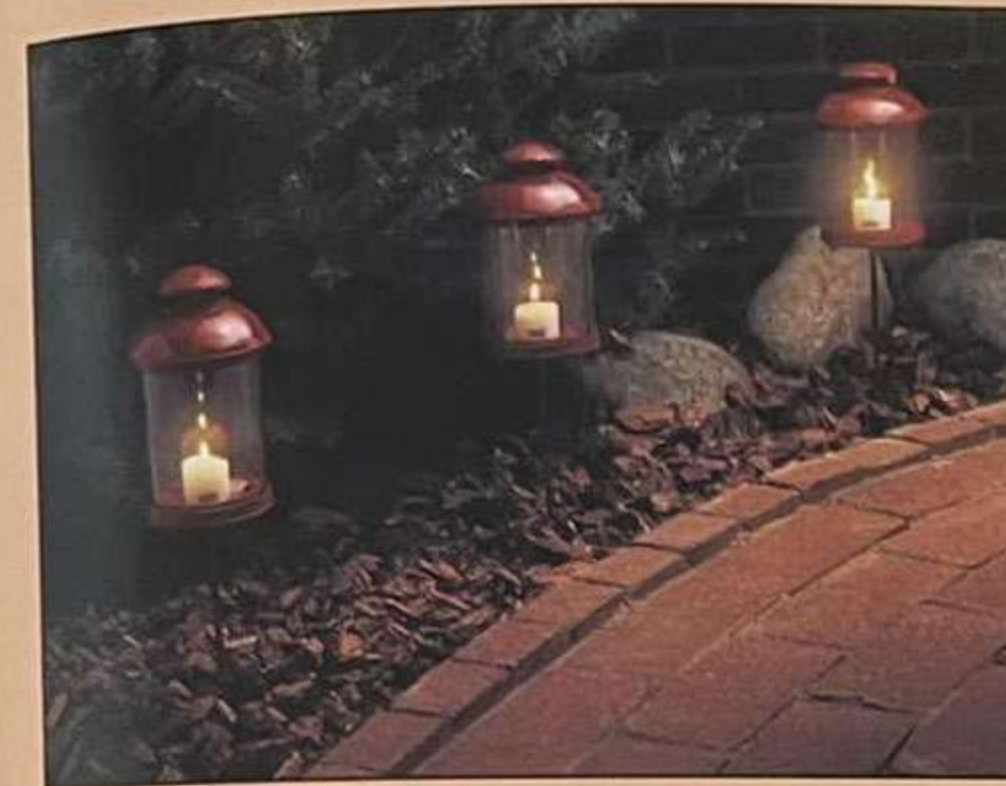
The Weber Torch is made of heavy-gauge steel sealed with porcelain enamel to last through years of backyard use. And since it holds over a gallon of fuel, you refill it only once or twice a season. Jet Black. #2910

Replacement Torch Wicks for Weber Torch. One inch diameter. Two to a pack. #2911



### Outdoor Lighting

Our collection of outdoor amenities is a line of outdoor products which carry the Weber® tradition of quality and outdoor fun into new areas.



Each is made to the same standards of safety and enjoyment as our grills. And each is a high-margin product offering you attractive profits and your customers new ways to enhance their outdoor living.

#### BACKYARD CANDLELIGHT THAT WON'T BLOW OUT

The brightest Weber idea yet! The unique adjustable damper means the Weber® Lantern won't blow out—no matter how windy or rainy it gets.

Your customers will love the glow Weber Lanterns give outdoor living. And they'll appreciate the quality features, including rust-resistant aluminum construction, with baked-enamel finish and a virtually unbreakable Makrolon™ lens.\*

Weber Lanterns are eight inches tall; supplied with hanging bail, 8½ inch ground stake, and seven-hour candle.

#9101 Black	#9103 White	#9105 Blue
#9102 Yellow	#9104 Red	#9107 Green

#### LANTERN ACCESSORIES

Pole Hangers. Attach easily to virtually any patio umbrella pole. Rust-resistant. #9175  
 Mounting Brackets for decks and fences. One per pack. #9160  
 Replacement Candles. Unique translucent cup eliminates messy wax clean-up. Display packs of six. #9156  
 28 inch Yard Stake. #9165



\*Makrolon is a trademark of Bayer AG, Division KL D-5090, Leverkusen, West Germany.



## ACCESSORIES



*"Now son, be careful and don't burn yourself." Yeah, right, Dad. Like I haven't been flipping burgers for a living for the last year. (Okay, so it's not for a living, but for my car and surfboard and stereo and stuff, you know, everything that makes it something you could call a life.)*

*Dad's so careful. He comes out here and it's like he's gettin' ready for a trip to the moon. I mean it takes the guy an hour to get the grill set up. And each burger has to be turned just right, in this perfect arrangement.*

*Me, I take the same attitude to flipping burgers that I take to surfing. Know your tools. Become one with the burger. Get your technique down and then go with the flow. I stay cool and flip, one, two, three, like that. Easy as can be. It absolutely drives Dad nuts.*

Weber has tools and accessories to suit every personality and every way to barbecue.



**I**f there is one kind of accessory that gives you the greatest potential for add-on sales, it's barbecue tools. Yet too often customers are willing to settle for the cheapest tools—only to be disappointed by their inferior quality.

Weber® Barbecue Tools



CHEF'S TOOL SERIES

People buy Weber Grills because they are built not for price, but for durability. The same is true of our finest line of tools. The heavy-gauge stainless steel is set in a light oak handle for a feel of both quality and comfort. A premium price point for the uncompromising customer.

	Individual	Skin Pack	Gift Box
Jumbo Turner	# 1650		
Fork	# 1651		
Basting Brush	# 1652		
Jumbo Tongs	# 1653		
Set with turner, tongs and fork		# 1615	# 16155
Set with all four		# 1616	# 16165

ENTHUSIAST'S TOOL SERIES

For the customer who has just discovered the superior quality of the Weber line, the Enthusiast's Series offers much of what our Chef's Series offers: genuine oak handles and heavy-duty brushed stainless steel at an intermediate price point.

	Individual	Skin Pack	Gift Box
Jumbo Turner	# 1690		
Fork	# 1691		
Basting Brush	# 1692		
Multi Purpose Tongs	# 1694		
Set with turner, tongs and fork		# 1610	# 16105
Set with all four		# 1611	# 16115



CONTEMPORARY TOOL SERIES

In the style of today's Eurodesign kitchens—these striking tools in black anodized aluminum and stainless steel make a contemporary statement, and offer your customers traditional Weber quality as well.

	Skin Pack	Gift Pack
Set with turner, tongs and fork	# 1619	# 16195

BASIC TOOL SERIES

The Basic Series allows you to offer Weber Tools to consumers on a budget without compromising on the image you want your store to project.

Made of brushed stainless steel and lacquered hardwood handles, with the workmanship you expect from Weber.

	Individual	Skin Pack	Gift Box
Turner	# 1620		
Fork	# 1622		
Basting Brush	# 1623		
12-inch Tongs	# 1624		
Set with turner, tongs and fork		# 1600	# 16005
Set with all four		# 1601	# 16015

**T**ough and long-lasting, the quality of Weber tools projects the kind of image you want your store to have. And with four distinct, high-margin lines to choose from and a variety of packaging options, there's a Weber Tool sale to be made with every grill.





**T** Gas Grill Accessories  
 he kind of people who own Genesis® Gas Barbecues are the kind who want the best—who want maximum use out of their grill.

Now, Genesis Gas Barbecues may look like they come with everything a cook could ever need. But there are some specialized accessories which can help them get more still out of a very useful backyard appliance.

A rack for vegetables. Shish Kabobs. Or just a cover to protect their investment from the elements. Whatever they need, there's a Genesis Accessory to help them enjoy their barbecue even more.



**WOK PAN**

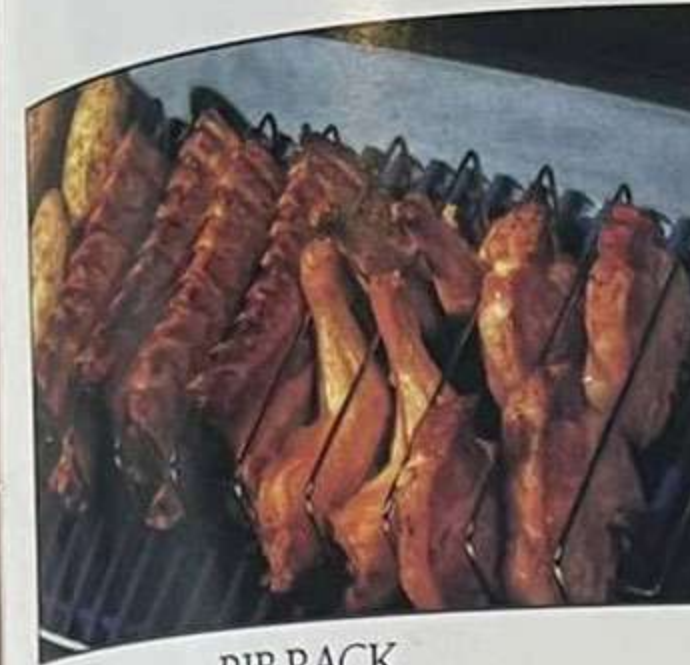
Try stir frying or steaming meat, fish, or vegetables. For use on the range-style side burner of Genesis 3 and 5 Gas Barbecues. Durable, all steel. #9845



**GENESIS GAS BARBECUE COVERS**

Keep the barbecue clean and protected year-round. Finest quality heavy-duty nylon covers #9835 for Genesis 1, #9840 for all larger Genesis models.

Heavy-duty vinyl cover (not shown) resists cracking even in the coldest weather. #9240 for Genesis Junior; #9825 for Genesis 1; #9830 for all larger models.



**RIB RACK**

Heavy, bright nickel-plated steel rack increases rib cooking capacity by 50%. Great for grilling chicken and chops, too. #3701



**SHISH KABOB SET**

Six stainless steel skewers make turning a snap. Heavy, bright nickel-plated steel rack holds skewers to make removal from the grill easy. #2501



**ROAST HOLDER**

Ideal way to roast meat. Convenient handles make placement and removal easy. Heavy, bright nickel-plated steel. #9501

**ACCESSORIES NOT SHOWN**

**SIDE BURNER**

Upgrades Genesis 2 or 4 Gas Barbecues. #9874 Natural Gas. #9870 L.P. Gas.

**THERMOMETER**

Upgrades Genesis 1 Gas Barbecue. #9815

**LARGE DRIP PANS**

10 heavy-gauge pans in polypack. Fit all Weber Gas Barbecues. #3301



**SMALL DRIP PANS**

10 heavy-gauge aluminum pans line grease catch pan. They are also perfect for cooking vegetables on Genesis Gas Barbecues. #3300

**SWING-UP CEDAR WORK SURFACE**

Adds convenient work space instantly. For Genesis 1 Gas Barbecue. #9220

**L.P. TANK**

20 lb. capacity, all welded steel, 10% safety relief valve. #21201

**REPLACEMENT COOKING GRILLS**

Replaces worn cooking grills. Heavy-gauge steel sealed with porcelain enamel for convenience and durability. Rust resistant, virtually self-cleaning. Two grills per pack. #9866 for Genesis 4 & 5, #9860 for Genesis 1, 2 & 3, #9865 for Genesis Junior.

**REPLACEMENT FLAVORIZER® BARS**

Replaces worn Flavorizer Bars. #9211: Full set for Genesis Junior. #9813: Full set for all other grills.



**GRIDDLE**

Here's how to have fun cooking eggs, bacon and pancakes for breakfast and brunch outdoors. Not for Genesis Junior. #1405



**ROTISSERIE**

Two spit forks, shaft, fully electric motor and bracket convert the Weber Gas Barbecue to a rotisserie cooker in no time. #9210 for Genesis Junior. #9810 for all other models.



**CORN 'N TATER™ HOLDERS**

They sit directly on cooking grill to save space and speed up vegetable cooking. Heavy, bright nickel-plated steel. Easy clean-up. Four two-prong holders per pack. (Patent #D284,282.) #3802



**W** Charcoal Kettle Accessories  
 Weber® Charcoal Kettles offer just as many opportunities for add-on sales as Genesis® Gas Barbecues. And with this assortment of highly useful accessories, there's something for every kettle buyer.



**ROAST HOLDER**

Cook and carry a roast to the carving board with one accessory. This heavy, bright nickel-plated steel accessory fits 18½ inch diameter kettles and larger. **#9501**



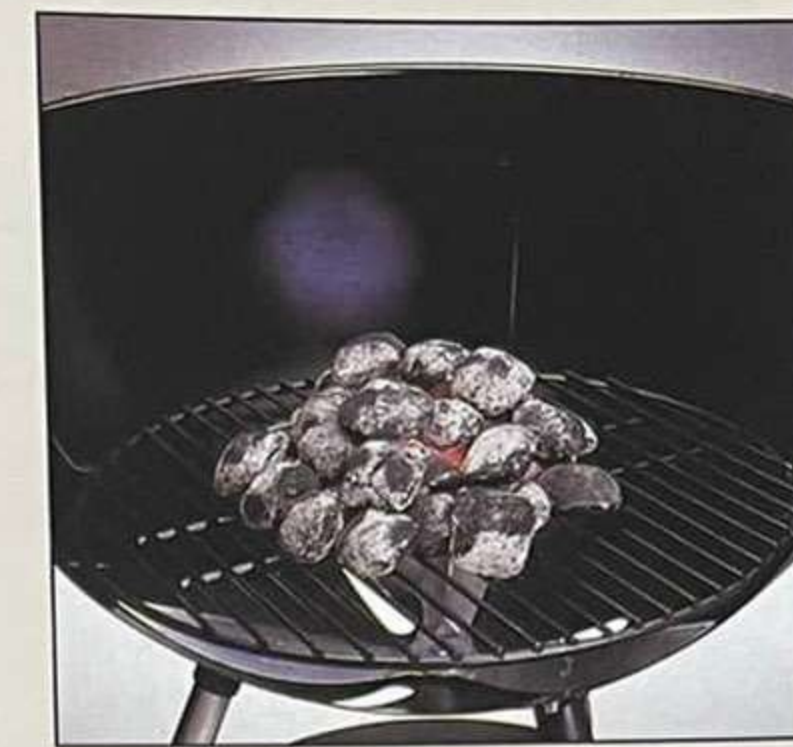
**SHISH KABOB SET**

Six stainless steel skewers on heavy, bright nickel-plated steel racks make turning a snap. Fit 18½ inch and larger kettles. **#2501**



**GRIDDLE**

Prepare breakfast or brunch outdoors. Easy-to-clean cast aluminum surface. Fits all 22½ inch charcoal kettles. **#1405**



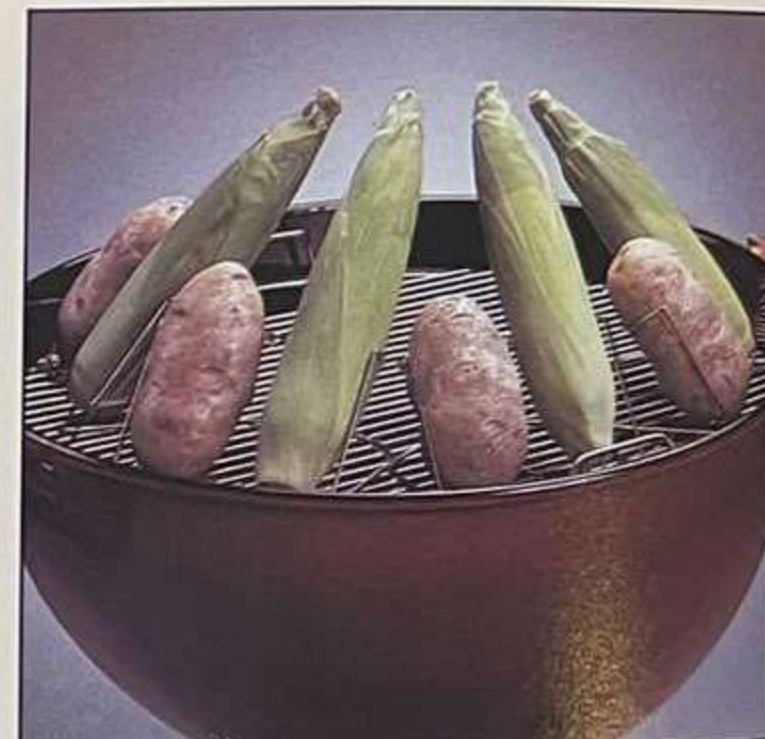
**REPLACEMENT CHARCOAL GRILLS**

Heavy-gauge steel charcoal grills. 18½ inch diameter kettle charcoal grill: **#72501**  
 22½ inch diameter kettle charcoal grill: **#72801**  
 Smokey Joe® charcoal grill: **#72201**



**WEBER SIDEKICK® WORK TABLE**

A rock maple work table that hooks onto the grill or removes to serve as a cutting board. No-skid rubber feet for stability. Will not fit One-Touch® Plus™ models. **#1800**



**CORN 'N TATER™ HOLDERS**

Save space and speed up vegetable cooking! Heavy, bright nickel-plated steel holders sit directly on cooking grill and are dishwasher-safe. Fit all 18½ inch and larger kettles. Four 2-prong holders per pack. (Patent #4,458,585.) **#3802**



**22½" RIB RACK**

Great for cooking large quantities of ribs, chicken halves, and extra-thick chops. Heavy, bright nickel-plated steel rack. Fits all 22½ inch models or larger. **#3701**



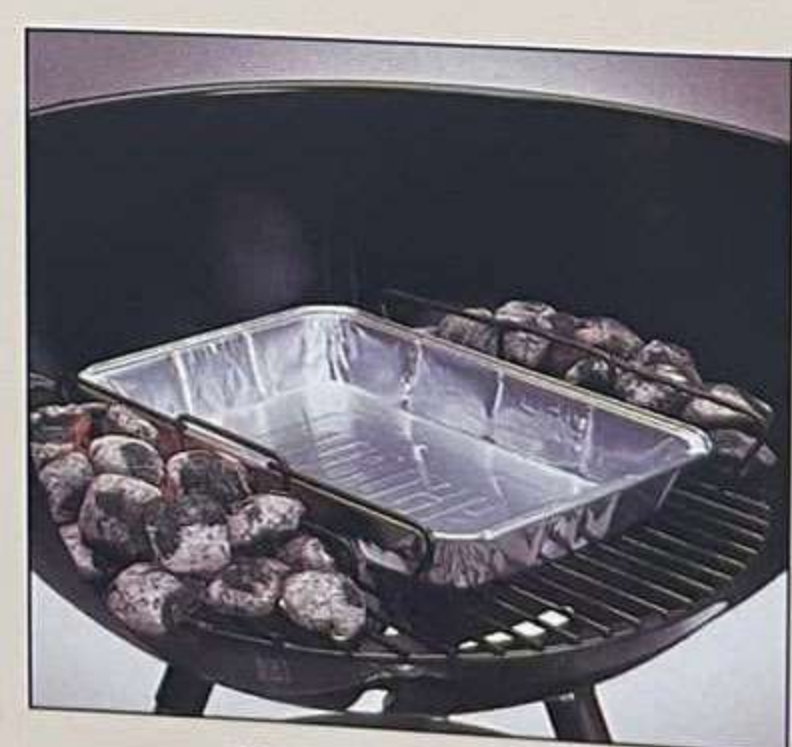
**REPLACEMENT COOKING GRILLS**

Heavy, bright nickel-plated steel cooking grill has curved handgrips that can hang from kettle handles. 18½ inch diameter kettle cooking grill: **#70601**  
 22½ inch diameter kettle cooking grill: **#70901**  
 Smokey Joe® cooking grill: **#70301**



**GRILL & TOOL HOLDER**

Nickel-plated clip-on holder keeps tools within easy reach. Fits 18½ inch and 22½ inch diameter kettles. **#1201**



**CHARCOAL RAILS**

Attach to bottom charcoal grill for indirect cooking. Fits all 18½ inch diameter kettles and larger. **#3901**



**CONDIMENT HOLDER**

Heavy, bright nickel-plated steel rack keeps salt, pepper, sauce and spices at hand. Fits all 22½ inch Weber charcoal kettles. **#21301**



**18½" RIB RACK**

Fits all 18½ inch diameter or larger kettles. **#3601**

**ACCESSORIES NOT SHOWN**

**LARGE DRIP PANS**

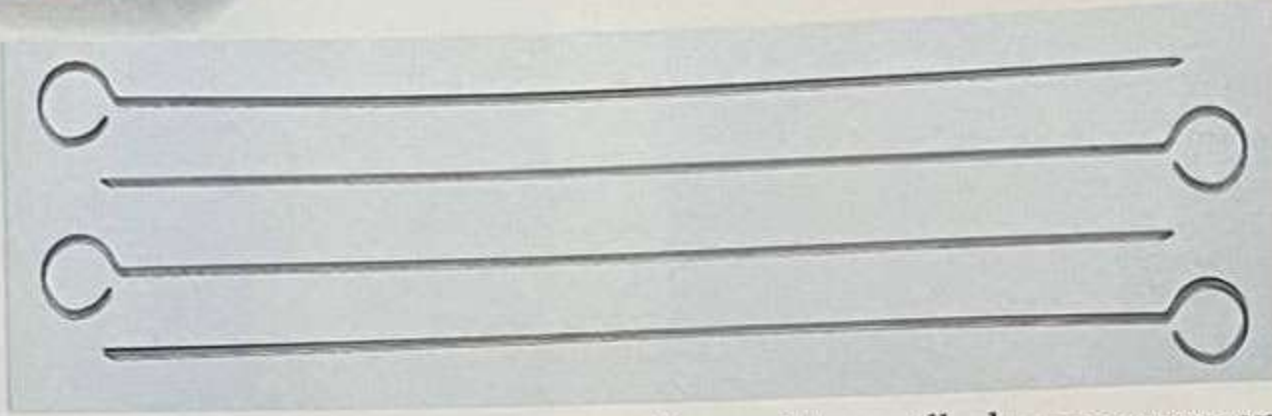
10 heavy-gauge aluminum pans in polypack. Use with charcoal rails for indirect cooking. **#3301**

**SMALL DRIP PANS**

10 heavy-gauge aluminum pans in polypack. Ideal for cooking vegetables and side dishes. **#3300**



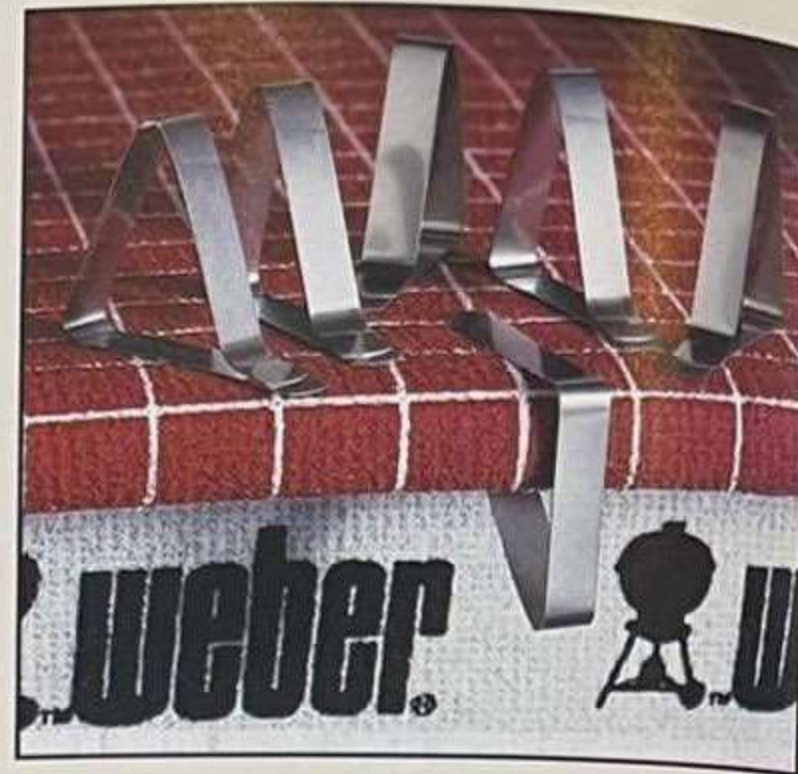




**SKEWER SET AND GRILL BRUSH**  
Add these practical items to any of the utensil series to round out your line. The Skewer Set contains four 15-inch chrome-plated steel skewers. Great for everything from grilling shish kabobs to roasting marshmallows. The Grill Brush has a hardwood handle and brass bristles that don't rust or leave rusty residue on

the cooking grill, plus a scraper end that aids in removing stubborn grill residue.

	Skin-Pack	Loose
(4) 15 inch Skewers	# 1640	
12 inch Grill Brush		# 1644
18 inch Jumbo Grill Brush		# 1646



**TABLECLOTH CLIPS**  
Secures cloth to table. An item sure to appeal to any family that enjoys outdoor eating. Set of six stainless steel clips in a skin-pack. # 16453

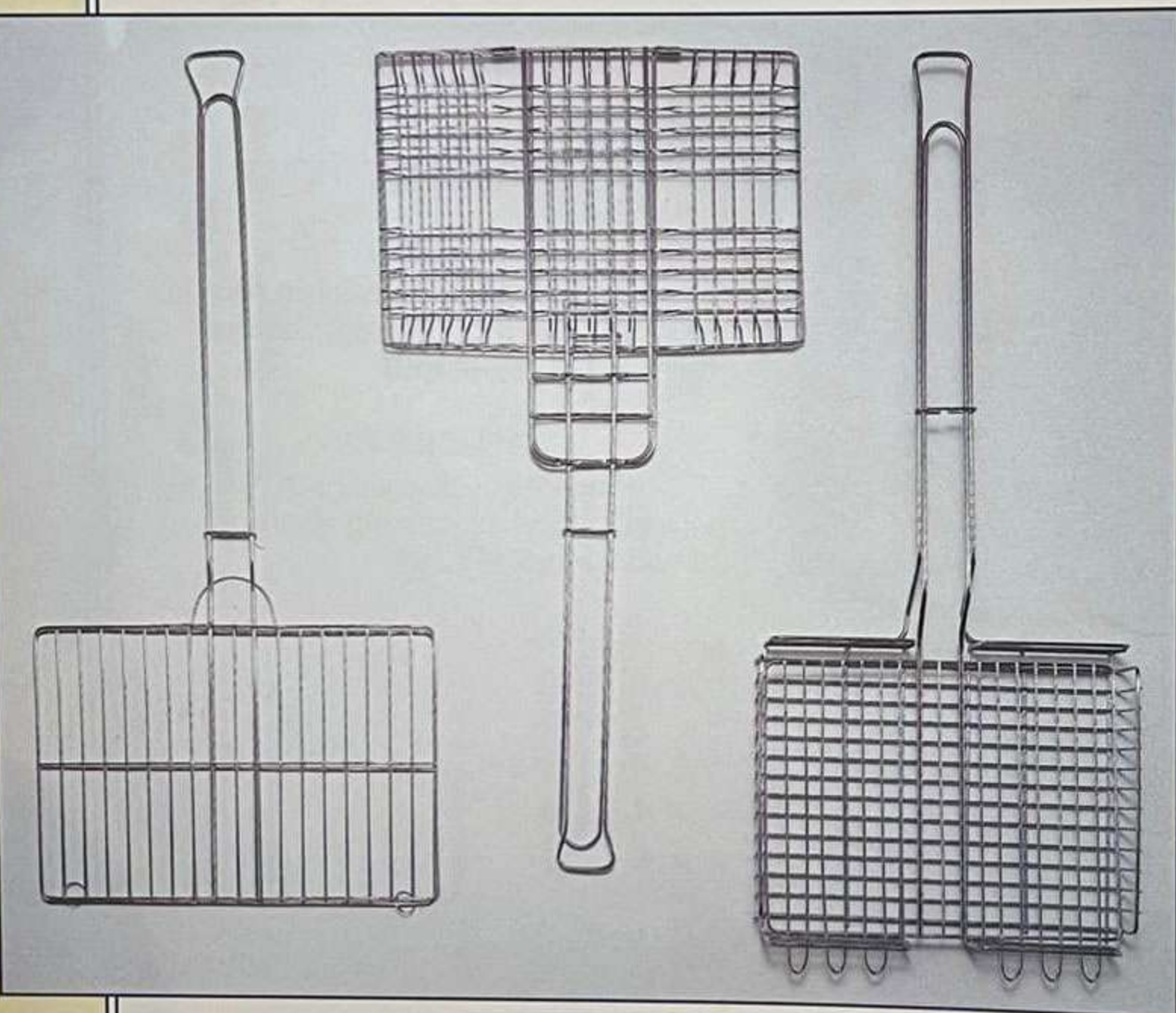


**THE STARTER SET**  
Includes charcoal rails, roast holder, grill and tool holder and 10 aluminum drip pans. The full-color, eye-catching cartoon of items is the perfect gift for the new outdoor chef. #8801

**WEBER FLAMGO™ FIRE STARTERS**  
For outdoor enthusiasts, Weber Flamgo Fire Starters are perfect for starting charcoal grills, safe for indoor fireplaces, and outstanding for camping or backpacking trips. These convenient, compact lighter cubes light gradually (not explosive—like lighter fluid) and can be started even if they are wet. Full-color package. #3950



**WEBER DELUXE COVERS**  
Protect your Weber grill with a touch of class. Heavy, black vinyl is flannel lined with custom-stitching and snap fasteners—resists cracking even in the coldest weather. All covers have the Weber logo in white. #7301 for 18½ inch diameter kettles #7701 for 22½ inch diameter kettles #7201 for 2880 Smokey Mountain Cooker™ Smoker



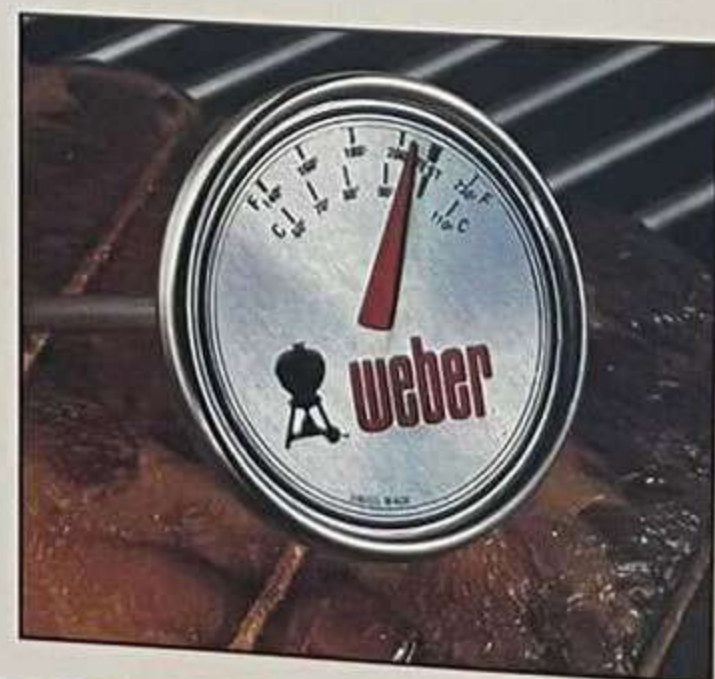
**OUTDOOR BROILERS**  
Perfect for cooking foods over open fires, in fireplaces, and of course, in barbecues. Sturdy chrome-plated steel, with display card packaging.

	Skin-Pack	Loose
Hamburger Broiler (for fish, chops, too)		# 1641
Deluxe Broiler (Expands for thicker cuts)		# 1642
Basket Broiler (for fowl, potatoes, etc.)		# 1643

**KETTLE COVERS**  
Sturdy light blue vinyl covers help keep kettles clean and protected.  
#4301 for 18½ inch diameter kettles  
#4701 for 22½ inch diameter kettles



**CHARCOAL CHEST**  
Keeps 18 pounds of briquettes handy, easy to pour. Great for FireSpice or sidewalk salt, too. (Patent #D261,604.) #6601.



**WEBER THERMOMETER**  
Tells you when barbecued foods have reached perfection. Instant-read design gives accurate internal food temperatures. #585

**WEBER® FIRESPICE® WOOD**  
The best way to capitalize on the trend toward wood smoked food. We offer the two most popular woods, hickory and mesquite, in eye-catching packages of wood chunks, chips or wood bits (in shaker container for gas and electric grills).

	Hickory	Mesquite
Wood Chunks (360 cu. in.)	# 17056	# 17106
Wood Chunks (720 cu. in.)	# 170511	# 171011
Wood Chips (105 cu. in.)	# 17051	# 17101
Wood Chips (210 cu. in.)	# 17053	# 17103
Wood Bits (68 cu. in.)	# 17054	# 17104



**WEBERGRABBER® TONGS**  
Long-lasting, stainless steel tongs turn food without piercing. Rich oak handles provide a safe, sure grip for moving briquettes. # 1983





## SELLING WEBER® PRODUCTS



"Thanks again for all your help."

"Well, I'm happy to do it. I think you'll be real pleased with your 'Smokey Joe'—it's a good little grill. Where are you folks staying?"

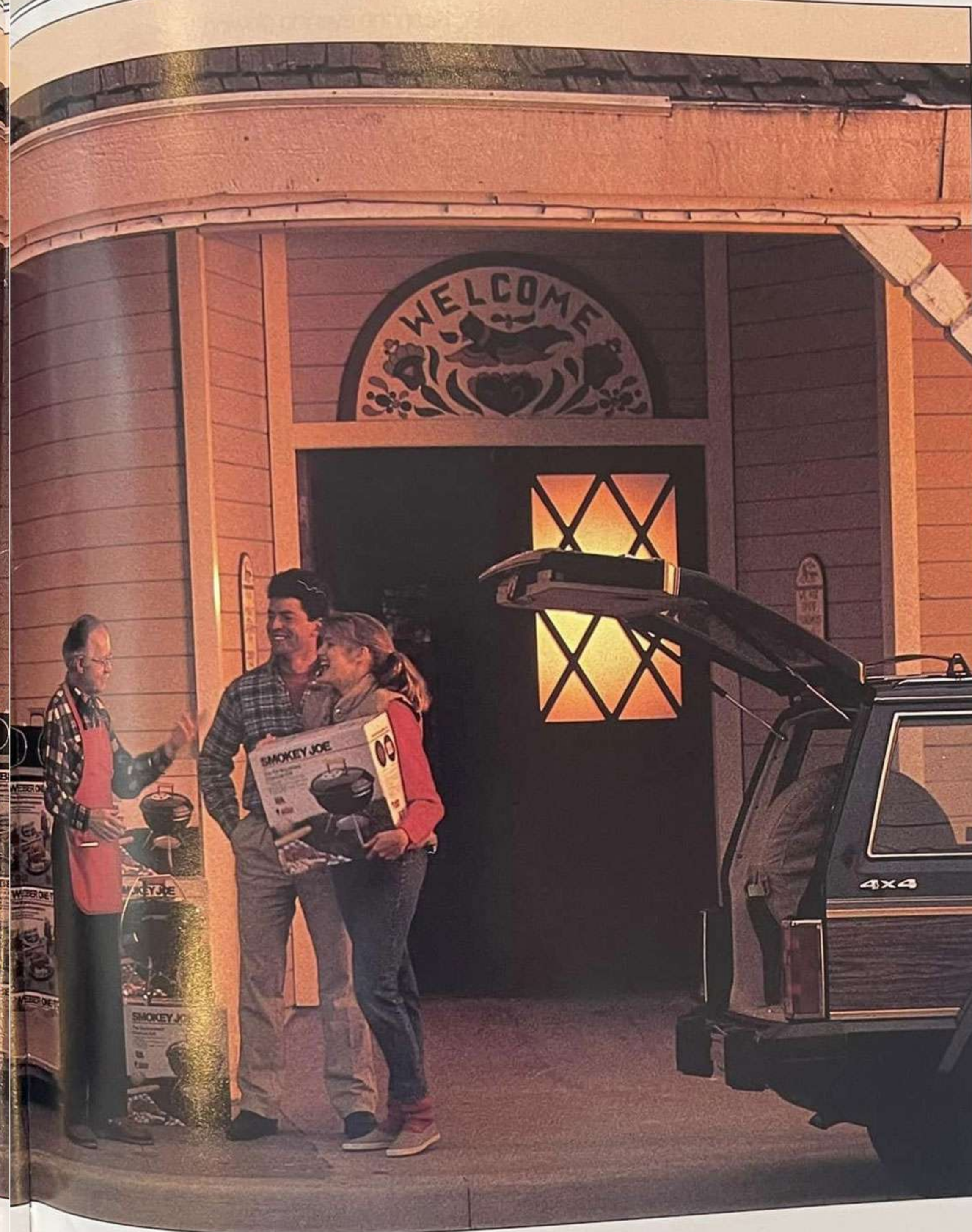
"Her father's got a cabin up by Split Fork."

"Split Fork—why, you're not little Jessie, are you?"

"Not so little anymore, I guess."

"Well, why didn't you say so. Son of a gun, I knew you looked familiar. I've been sellin' your dad bait—and a few six packs, if the truth be told—for forty years."

"I know. If he said it once, he said it a hundred times. Get everything you need at Harmon's. He runs a good store, he won't steer you wrong."



The most important part of every sale is you, the seller. Here's what we're doing to help you.



**T** Selling Weber® Products here are three elements to the successful sale of a product. It must meet a common need and be of good quality. The merchants who sell it must be good salespeople. And the maker of the product must strongly support the salespeople.

We don't think there's any doubt about the first two. And we're going to prove to you the truth of the third, with a strong national advertising campaign backed up by point-of-sale materials for your stores.

We're spreading the good news about Genesis® Gas Barbecues even wider...backing up our traditional kettle and other products ...and continuing the development of superior full-color packaging and in-store displays.

With this kind of commitment, we think that both of us are set for an outstanding year—the best ever!

Keep the evening glowing.



**weberlantern**

The outdoor candle that won't blow out!

From the biggest name in your backyard **weber**



A BLAZE OF COLOR

This free eye-catching, full-color display tells the Weber® Lantern story—and sells the customer for you. Or stock them on your own shelves—the packaging works the same way.

## GENESIS 5

The ultimate Genesis gas barbecue

THE INFORMATION AT HAND Our new full-color hang tags educate casual browsers—and turn them into buyers. We've got them for all Genesis models, as well as the Bar-B-Kettle™ Grill, both One-Touch® models and the Smokey Joe® Tuck-n-Carry™ grills.

**STAINLESS STEEL BURNERS**  
These stainless steel burners give you 30,000 BTU's and the ultimate in precise, even heating. No more flare-ups! The Flame Check™ Safety System shuts off the gas automatically if the flame goes out.

**A RANGE-TYPE SIDE BURNER**  
An 8,000 BTU professional-style burner for broiling steaks, sautéing and cooking. Available in steel or stainless steel construction.

**A GRILL AND A SMOKER**  
With the unique design in Chicago Smoker (patent pending), it's easy to add Smokey Joe® flavor to your Genesis 5 Gas Barbecue. Just add charcoal briquets to the stainless steel smoker nested on the Flavorizer Bars.

**EASY CLEAN-UP**  
Under the burners is a professional-style, slanted drip tray. Drip tray grease can be easily cleaned.

**FLAVORIZER BARS VIRTUALLY ELIMINATE FLARE-UPS**  
The revolutionary Weber® Flavorizer Bars virtually eliminate flare-ups, just as they do on the best gas grills. The Flavorizer Bars just hang enough to intercept and vaporize drippings before they can reach the heat source. The result is a barbecue with virtually no flare-ups.

**A GLASS ENCLOSED STORAGE AREA**  
When it comes to storage, the Genesis 5 Gas Barbecue is a real winner. The Grill, Side Burner, Smoker, and Flavorizer Bars are stored in a glass-enclosed storage area. And for extra protection, the grill is covered with a protective plastic cover.

**weber**  
It's great outdoors.

## The biggest advance in barbecues since the Weber Kettle.

Weber® means backyard barbecues. And our Genesis® Gas Barbecues are the culmination of everything we've learned about barbecuing in the past thirty years. Here are a few of the reasons Genesis grills deliver supremely satisfying meals every time.

The great thing about gas grills is convenience. The bad thing is lava rocks, which collect grease, causing flare-ups. So we kept the convenience and replaced the lava rocks with our patented Flavorizer® Bars.

When drippings hit the bars, they're vaporized instantly to put that smoke flavor you love back into the food, the way charcoal does. The bars heat evenly, so there are no hot or cold spots.



Weber grills are famous for letting you do everything from the quick searing of a couple of burgers or steaks to slow-roasting a big, juicy turkey. Genesis grills have three burners where others have two, so you can light them all for direct cooking (for things like steaks) or just light the two on the outside for good, slow indirect cooking (for turkeys or roasts).

Clean-up is simple on a Genesis. The bottom of the grill is funnel-shaped, to draw grease away from the burners and into a catch pan. And the entire bottom itself slides out for easy cleaning.

All Genesis models include lots of cedar working space, and many of the work areas are removable to be used as serving trays.



There are few things worse than a full grill and an empty gas tank. Instead of unreliable pressure gauges, Genesis grills have our patented hanging weight gauge, so you always know how much is left.

Ordinary barbecuing can be suspenseful—will that grill full of food be brown and tasty this time, or black and crunchy? Genesis grills remove that guesswork by giving you complete control over the temperature inside the grill from the moment you push the ignition button.

There's a Genesis Gas Barbecue for every lifestyle, from a compact apartment balcony size to ones with range-side side burners. See your Weber dealer or call 1-800-99-WEBER for the name of a dealer near you.

It's great outdoors. **weber**

### A MASSIVE NATIONAL AD CAMPAIGN

To reach your customers, we've got a big national campaign breaking this season in such widely-read magazines as *Newsweek*, *People*, and *Sports Illustrated*, among others. It kicks off with a detailed, full-color two page ad selling the features of the Genesis line. This point-by-point ad will really educate customers about the benefits of the best line of grills we make: Genesis®.

Then, to extend the Weber name even further, that two-page ad will be followed by a series of smaller quarter-page ads highlighting products like our new Flamgo™ Firestarters (shown), the One-Touch® Plus Kettle, the Smokey Joe® Portable Grills, the Weber® FirePlace and FireSpice® Cooking Wood... five more ads in all. It's an advertising package that's really going to make a splash!

### A FAMILIAR SIGHT

The popularity of our Go-Anywhere® Grills is proven by the popularity of their new packaging and displays like these in stores all over America, as well as displays for Weber® FireSpice® wood. In fact, we've got full-color packaging on most of our products now.

## The safe new way to light your fire.



Weber® Flamgo™ Firestarter Cubes are the easy and effective way to light barbecues and fireplaces. Unlike lighter fluid, they don't flare up or leave an aftertaste on food. And they even light when wet! **It's great outdoors. **weber****

© 1988 Weber-Weber. The kettle configuration and ® are registered U.S. trademarks. Flamgo is a trademark of Weber-Stephen Products Co. 200 East Daniels Road, Palatine, IL 60067.

© 1988 Weber-Weber. Genesis, Flavorizer, Smokey Joe, One-Touch, Go-Anywhere, FireSpice, Weber-Grabber, and the kettle configuration are registered U.S. trademarks. Smokey Joe is a registered Canadian trademark. Crossbones, The Ranch, Sidekick, Smokey Mountain Cooker, One-Touch Plus, Tuck-Away, Char-Basket, Corn'n'Tater, Warm-Up, Smokey Joe Tuck'n'Carry, Flame Check and Steam-N-Chips are trademarks of Weber-Stephen Products Co. 200 E. Daniels Road, Palatine, IL 60067. Printed in U.S.A.  
Genesis 1.2, 3.4.5, and Junior are covered under U.S. patent Nos. 4,677,964, 4,853,727 and other patents pending. In Canada Rd. 1987 Reg. No. 58034.