



Be a

**Weber**® **winner**

**in 1983!**

**The only thing better than our '82 program is our '83 program—even a new factory to get your order to you faster!**



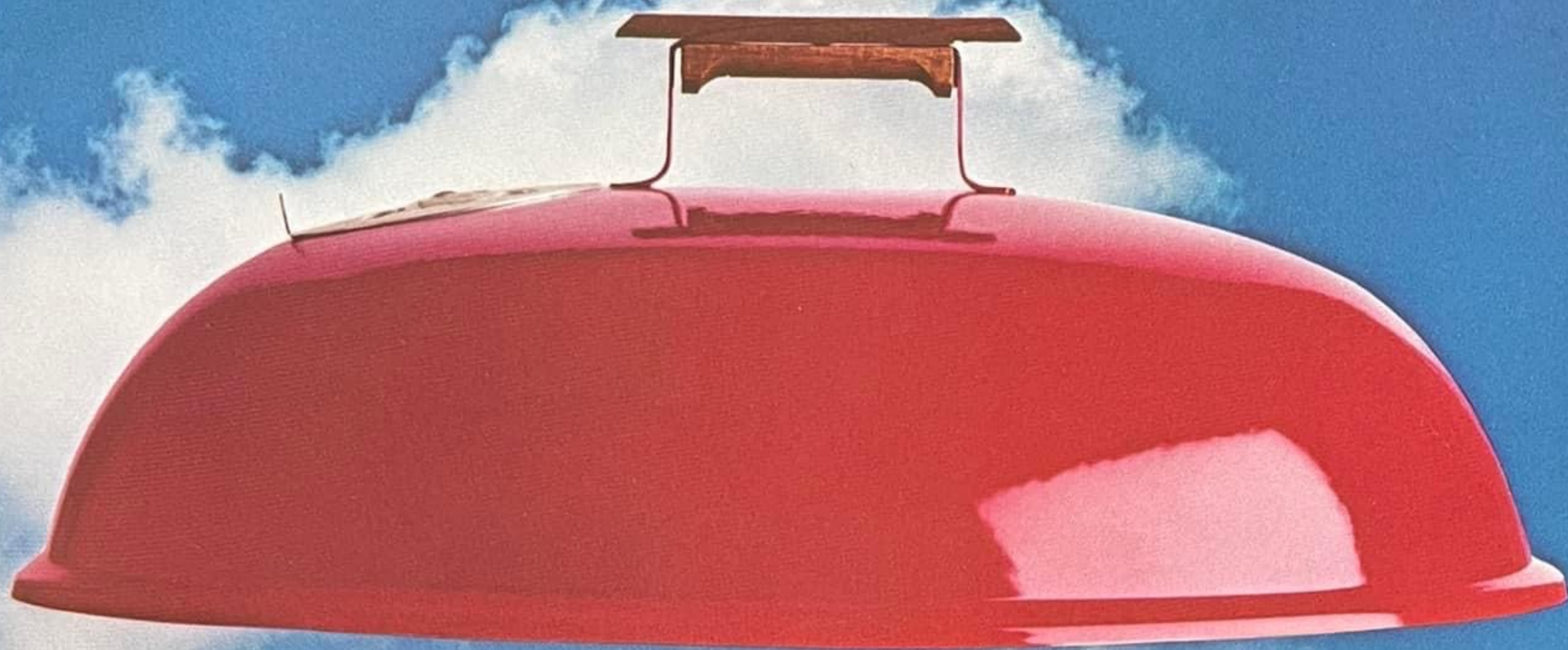
**Faster delivery.** Our new factory in Palatine, Illinois means even more efficient production, and faster handling of your order.

**C**



- N  
by
- I  
tiv  
the
- E  
off  
an





## Only Weber gives you everything you need in '83.



- **Presold consumers.** They'll see Weber on ABC, CBS, and NBC, in the biggest network TV schedule in Weber history. You saw us in '82... and '83 will be gigantic.

- **National magazines.** Full-color ads in magazines read by your best customers.

- **In-store display materials.** Eye-catching. Informative. They take no extra floor space, yet they help close the sale for you!

- **Expert help and advice.** Your Weber representatives offer advice on product mix, display, Weber planograms and other suggestions to boost sales and profits. While

you mind the store, Weber detail people help you close the sale. Their help is free!

- **Weber's One Touch™ System** makes all other outdoor cooking equipment obsolete. It's the greatest invention since the Weber Kettle itself... a proven winner! No other brand cooks like, lasts like, or sells like Weber!



- **New double-duty oak handle tongs and other fast-turn accessories.** New for '83. Wood-grip, heavy-gauge stainless steel tongs are needed by every chef. Weber exclusive-design knives, cookbooks, and other accessories mean add-on sales and profits.



Be a  
**weberwinner**  
in 1983!

**weber.**

## "go-anywhere" grills

### Go-Anywhere Grills: the fastest turning

Good things come in small, portable packages . . . and the Weber "Go-Anywhere" grills are just that. The "Go-Anywhere" grills make the best of company for family picnics and travel needs.

**Smokey Joe**—14-1/2 in. diameter, 17-1/2 in. high kettle. The fast-selling Smokey Joe now has an improved, bright-finished ash catcher and legs to make it more durable and rust-resistant than ever! Big enough for small roasts, small enough for camping and picnic portability, the Smokey Joe has removable legs, porcelain finish inside and out, and a triple nickel-plated cooking grill. 5-year limited warranty. **#10001 Jet Black**

#### Go Anywhere Accessories

**Griddle**—Great for cooking breakfast outdoors. Its easy-clean aluminum surface makes fixing pancakes, bacon and eggs a pleasure. Fits all Weber kettles in addition to the "Go-Anywhere" grills. **#1400**

**Wok Pan**—Wok cooking is a popular way to add versatility to any barbeque menu. All-steel, fits Smokey Joe model (#10001) only. **#8300**

**Shish Kabob Set**—6 heavy-duty, stainless steel skewers on nickel-plated racks that attach to cooking grill. Fits all "Go-Anywhere" grills and Weber kettles. **#2500**

**Drip Pans**—Set of 10 heavy-gauge pans in polypack. Can also be used for steaming and cooking foods on the grill. Fits all "Go-Anywhere" grills and Weber kettles. **#3300**



est turning items in the line.

And these high-quality compact barbeque units are ideal for apartment and condominium owners with balconies and small patios, too.

Now everyone can enjoy a Weber barbeque—in the smallest of spaces!

#10001

#1510



**Table Top Gas Grill**—Weber's newest and hottest little gas grill! The ultimate in space-saving convenience—legs fold up to lock cover in place for easy carrying and storage. Porcelain-covered steel, full 160 sq. in. cooking area . . . perfect for balconies, picnics, tailgate parties! Uses readily available, disposable L.P. cylinders . . . or can be adapted to refillable tanks (see hose adapter #871015).

**Tank not included.**  
#1510 Jet Black

**Portable Table Top Grill**—A popular charcoal grill for picnics, tailgate parties, RV's, or any tight spaces. Legs fold to lock cover on for easy, safe portability. Solid Weber engineering . . . porcelain-sealed steel with no nuts or bolts to burn or rust out. 160 sq. in. cooking area. The air damper system is rustproof. 5-year limited warranty.

#121001 Jet Black

#8300

#121001



#3300

Be a  
**Weberwinner**  
in 1983!

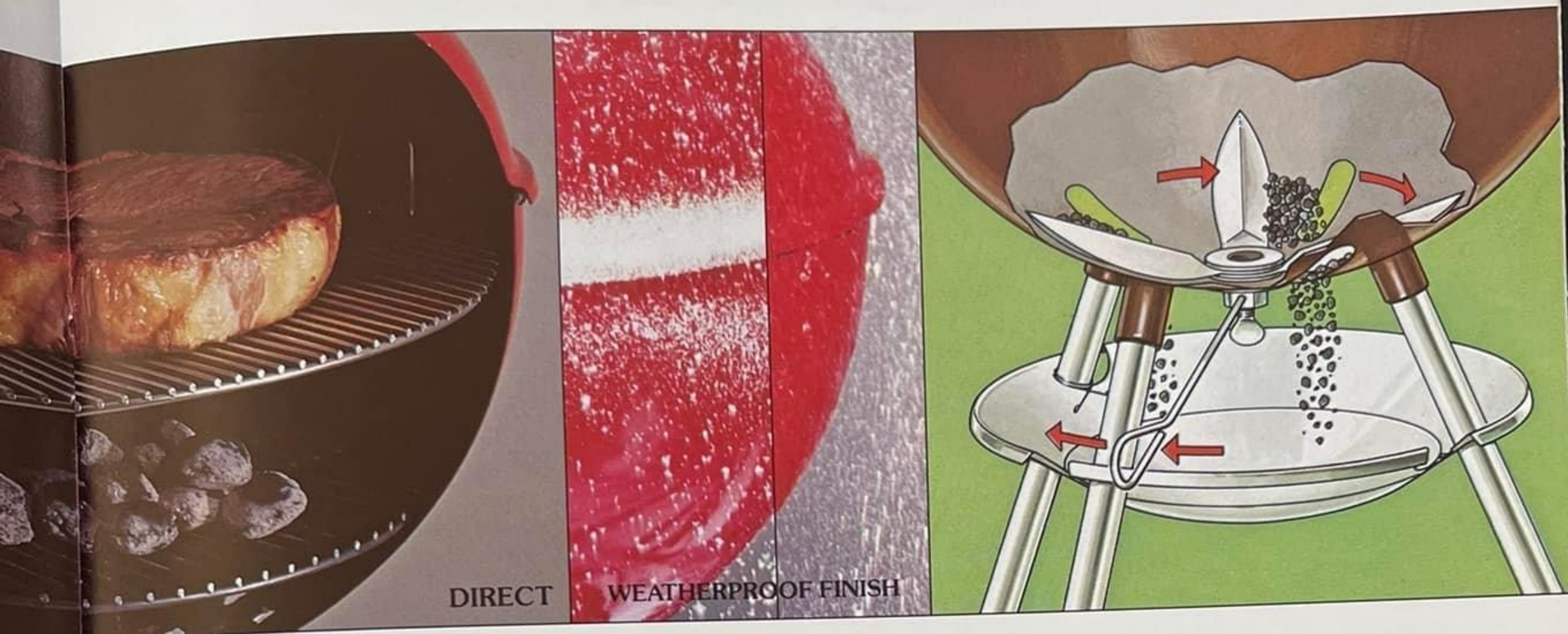
A  
B  
C  
D  
E  
F  
G  
H  
I  
J  
K  
L  
M



INDIRECT

**WE**  
**If y**

The  
syno  
barb  
nam  
M  
and  
thre  
it sw  
ashe  
turn  
grill  
sell  
A  
hav  
no  
E  
only  
alre  
M  
or c  
one  
bus  
A.  
har  
B.  
On  
do  
cha



**weber one-touch**  
System

**If you really want traffic, feature the name people know.**

The original Weber Kettle that is synonymous with quality, and the only barbecue kettle people ask for by name, has been perfected.

Move the "One-Touch" lever back and forth and it opens and closes all three vents. As an added benefit, it sweeps out any accumulated ashes. No need to hand-scoop, no turning kettle upside down, no lifting grills out... no more mess. What a selling point!

And only Weber Barbeque Kettles have the One-Touch system—there's no other like it. (Patent pending.)

But this unique One-Touch feature is only the finishing touch on what is already a legend.

No other product cooks like, lasts like, or delivers customer satisfaction like the one... the only... brand name in the business.

**A.** Weather-resistant, heat-resistant handles.

**B.** Close the top vent (and the One-Touch system) when cooking's done to extinguish the fire, and save charcoal for the next time!

**C.** Weber's original round design reflects and circulates the heat evenly. Foods cook evenly, perfectly—no ruined meals!

**D.** Sturdy, heat-resistant wooden handles.

**E.** Heavy-gauge cooking grill. Triple plated. Now with curved handgrips that hang on Kettle handle.

**F.** Heavy-Gauge Steel Kettle—not painted but sealed inside and out with clean, colorful porcelain-enamel that won't rust, burn or stain. And Weber stands behind the 5-year limited warranty with a history of satisfied customers!

**G.** Durable charcoal grill.

**H.** Patented leg coupling. (Patent #3538906.) No thumbscrews or bolts needed.

**I.** All new One-Touch system cleans out accumulated ashes with one easy sweep. No scooping... no mess. (See illustration.)

**J.** Ash catcher is outside the kettle for unobstructed air flow, easy ash disposal. It's more rigid than ever, and has ash catcher clips so it won't blow away!

**K.** Rugged unbreakable wheels. Crackproof to  $-40^{\circ}\text{F}$ , built to last a lifetime.

**L.** No-rust aluminum legs.

**M.** Strong nickel-plated bottom brace is a handy shelf, too!

Barbeque cookbook with dozens of recipes and directions. It's a full-color P.O.P. hangtag, too, attached to every kettle, that identifies... and sells... genuine Weber!

**Indirect cooking method.**

Drip pan goes under turkeys, hams, thick cuts, roasts; charcoal goes on either side. Move the One-Touch lever to open and Weber's air flow system creates *natural convection* for faster cooking... and juicier meats than you could ever get in a conventional oven.

**Direct cooking method.**

Place burgers, steaks, chops right over a single layer of coals. Covered cooking seals in natural juice flavor; prevents flare-ups and burning.

# weber one-touch System

The more compact size—18-1/2 in. diameter, 28 in. high kettle with all the quality construction features that made Weber famous. 269 sq. in. of cooking area. Comes in three colors, each a proven best-seller.

- #31001 Jet Black
- #33001 Red
- #38001 Chocolate.



**Weber's 5-Year  
Limited Warranty**  
Every Weber charcoal grill is durable, of course, and consumers know it. For proof, they need look no further than the 5-year limited warranty.





**70000 Series**—The legendary Weber Kettle, against which the standards for outdoor cooking equipment are measured.

22-1/2 in. diameter kettle is equipped with the exclusive and convenient One-Touch system. Perfect size (397 sq. in. cooking surface) for large turkeys, rib roasts, steaks, plus extra room for corn and potatoes. The cover reflects and circulates heat . . . no need to

turn the food . . . ever! No flare-ups, no burning; perfect results for even amateur chefs. Available in 5 porcelain-sealed, weather and stain resistant best-seller colors. Free cookbook attached, in full color, with dozens of delicious barbeque recipes.

- #71001 Jet Black    #75001 Dark Blue
- #73001 Red        #77001 Dark Green
- #78001 Chocolate.

Be a **Weberwinner**  
in 1983!

8001



#73001



#71001



#75001



#78001



#77001

# WeberWinners for every outdoor cook.

Where does your customer want to cook? Out on the ranch—for a Texas-size barbeque party? Out on the bay, while his boat glides through the water? Or just out in the yard for the annual neighborhood block party?

It doesn't matter where they want to cook. Or how many they want to cook for. Weber offers the perfect kettle. Right for the customer, right for the sale.

Make sure you offer the kettles that meet *everyone's* requirements. Be a WeberWinner. What a choice you'll be able to offer!



#93002

#60001



#81001



**Imperial Wagon—** Combine the quality of a Weber Kettle with this beautifully designed wagon—and you have a unit that's a handsome addition to any barbeque scene.

And for all its good looks, this kettle/wagon is infinitely practical, too. It provides the portable work surface and storage area that every outdoor cook finds essential.

**#16301 with Red Kettle**  
**#16801 with Chocolate Kettle.**

**Galley Que** (not shown)—Gimbal-mounted 14-1/2 in. diameter kettle stays level... mounts in minutes on boat stanchion, bulkhead, balcony railing or RV. Porcelain enamel on steel, and stainless steel to resist corrosion in salt air. Safety-designed ash catcher makes ash disposal easy. Galley Que dismounts quickly for picnics or shore lunches, too!

**#41001 Jet Black.**

**The Ranch**—Makes tall orders for the chef simple. Cook for an entire neighborhood social, church or school group at once. No more eating in shifts. 37-1/2 in. diameter kettle, 27 in. high. 1104 sq. in. cooking area.

**#60001 Jet Black.**

**80000 Series** —For the large (or just extra hungry) family, and those people who love to entertain lots of friends. 26-3/4 in. diameter kettle, 32 in. high. 562 sq. in. cooking area.

**#81001 Jet Black.**

**Smokey  
Mountain  
Cooker™**

## Smokey Mountain Cookers. The most expensive smokers on the market—and worth it!

Smoking foods is an increasingly popular way for outdoor cooks to add a new flavor dimension to foods.

And there are no better built smokers available than the one that carries our Weber name—the Smokey Mountain Cookers.

The large capacity smokers are constructed of first-quality materials. So they're built better to last and last.

The heavy-gauge steel unit is lined inside and out with black porcelain finish that will not burn, stain or rust.

A solid wood handle, nickel-plated grills and a porcelain protected water pan are other fine features of the product. The Smokey Mountain Cookers can be adapted for roasting, steaming and barbequing, too.

Backed with our 5-year limited warranty, it's a sure bet our Smokey Mountain Cookers are the most durable smokers available.

**14½" diameter Smoker:**  
#1880

**18½" diameter Smoker:**  
#2880



#2880



#1880



A

B

C

F

I

J

K



WEATHERPROOF FINISH

G

U  
g

W  
co  
ba  
lig

Ke  
sta  
Inc  
ke

for  
arc  
pe

We  
hea  
por  
wo  
A.  
sol  
B.  
circ  
juic



**weber**  
gas  
kettles

**Exclusive Weber state-of-the-art features make these easy to buy...easy to sell.**

Weber Gas Kettles provide maximum convenience for leisure time barbequing. The push-button ignitor lights gas quickly.

The added plus is the Weber Gas Kettles' exclusive patented, *movable* stainless steel burner for Direct and Indirect cooking. No ordinary gas kettle has one like it.

The unique Weber design is round for a reason, too. The heat circulates around the food on all sides, for perfect results every time.

Constructed of the finest materials, Weber Gas Kettles are made of heavy-gauge steel and coated with porcelain-enamel for a finish that won't burn, rust or stain.

A. Weather-resistant, heat-resistant solid wood handle.

B. Weber's covered cooking circulates the heat, locking in natural juices for perfect results every time.

Great outdoor flavor . . . with no burning! There's no rotisserie needed, and no electric cord . . . the kettle is round, so you rotate the heat.

C. Heavy-Gauge Steel Kettle—not painted, but sealed inside and out with clean, colorful porcelain-enamel that won't rust, burn or stain.

D. Nickel-plated cooking grill—397 square inches of cooking area!

E. Self-cleaning lava rocks absorb gas heat, and vaporize the meat juices . . . for "outdoor" flavor without ashes, mess or waiting! It's hot in minutes!

F. Lighting hole—large and convenient.

G. Exclusive movable stainless steel burner (Patent #3688758) for Indirect and Direct cooking. Funnel design for more even heat and stable flame.

H. Push button ignitor. (Patent #4302181)—lights gas conveniently!

(Deluxe model only.) No need for matches or waiting.

I. Weatherproof grease cup locks into control post.

J. 5-inch porcelainized steel post—weatherproof and extra stable.

K. Infinite heat selection knob for total heat control. Detents at high and off settings. Knob removable for safety!

L. Balance scale (Deluxe model only) tells you how much gas is left.

10-foot quick-disconnect flexible hose with portable natural gas unit. L.P. Gas unit has flexible hose with regulator.

Exclusive draft diverter—helps prevent blowouts!

Cookbook with dozens of recipes attached to every gas kettle. Makes an eye-catching hangtag at point of sale, too!

# weber gas kettles

**Deluxe Portable Gas Kettle—**  
22-1/2 in. diameter kettle features a push-button ignitor for instant starts, and an easy-read balance scale shows how much gas is left in the tank. Comes with 20 lb. L.P. tank, tank holder, and flexible hose with regulator.

- #211101 Jet Black (Tank included.)
- #213101 Red (Tank included.)
- #218101 Chocolate (Tank included.)

**Standard Portable Gas Kettle—**  
Standard 22-1/2 in. diameter kettle for use with L.P. Gas. Comes with 20 lb. L.P. tank, tank holder, and flexible hose with regulator.

- #201101 Jet Black (Tank included.)
- #203101 Red (Tank included.)
- #208101 Chocolate (Tank included.)

**Standard Portable Gas Kettle without Tank—**

- #101001 Jet Black (Tank not included.)
- #103001 Red (Tank not included.)
- #108001 Chocolate (Tank not included.)

**Permanent Mount Gas Kettle—**  
22-1/2 in. diameter kettle for year-round outdoor cooking fun. Some assembly required.

- #111001 Jet Black.

**Standard Portable Gas Kettle for use with Natural Gas—**Standard 22-1/2 in. diameter kettle includes 10 ft. flexible hose with quick disconnect fittings.

- #141001 Jet Black.



#208101



#111001



#141001



#213101



Be a  
**weberwinner**  
in 1983!

**Weber**  
**Sidekick™**

**It may become the most profitable accessory you sell**

#1800



**Weber Sidekick**—In the kitchen, it's a heavy-duty work surface for food preparation.

On the barbecue kettle, it's a rock maple work table with lots of room for food, sauces . . . you name it!

Lift it off, and the Sidekick becomes a carving board at the table. And the no-skid rubber feet hold it steady for safe carving.

Indoors, outdoors, and indoors again . . . what could be more useful?

#1800





## The Weber brand name gives you repeat-sales power...with winning accessories.

These genuine Weber accessories tie in beautifully with the one and only Weber barbecue grill cooking method. Stock up and display year-round for fast turns and great margins!

**Condiment Holder**—Triple nickel-plated steel rack keeps salt, pepper, whatever you need right at hand. Fits all 22-1/2 in. Weber Kettles.

#21301

**Corn 'N' Tator Holder**—This nickel-plated space saver makes a "show-off" meal easy, even for a beginner. Fits all 22-1/2 in. Weber Kettles.

#3801

**Griddle**—Now you can even prepare breakfast or brunch outdoors. Makes cooking pancakes, bacon and eggs a real pleasure. Or try diced fish or meat on the griddle oriental-style. Fits all 22-1/2 in. charcoal and gas kettles. (See page 2 for the "Go-Anywhere" Griddle, #1400, a smaller version which fits all Weber grills and kettles.)

#1401

**Grill & Tool Holder**—Plated clip-on holder keeps the grill cleanly off the ground while lighting the coals... and keeps tools handy while cooking! Fits 18-1/2" diameter kettles and larger.

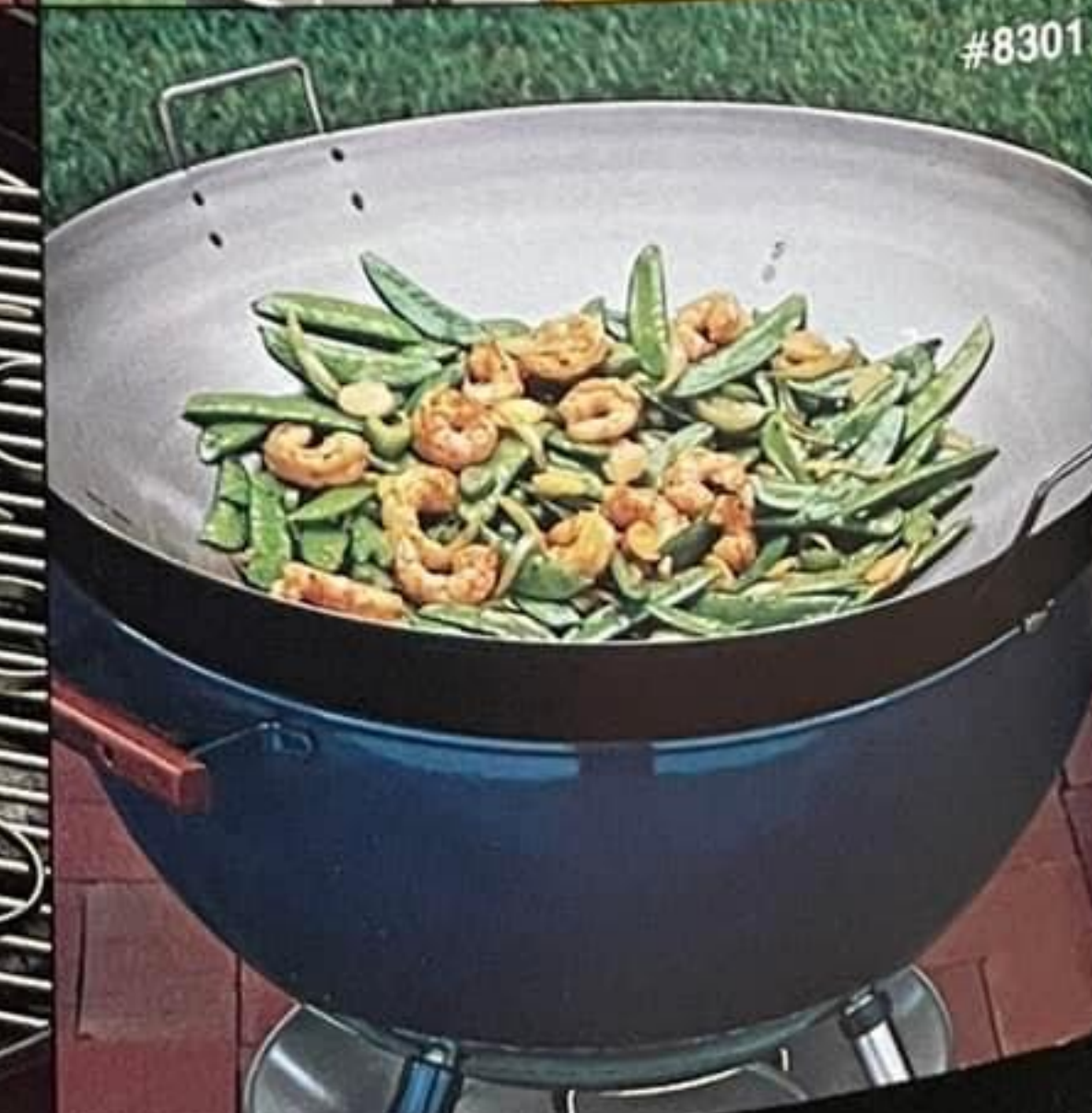
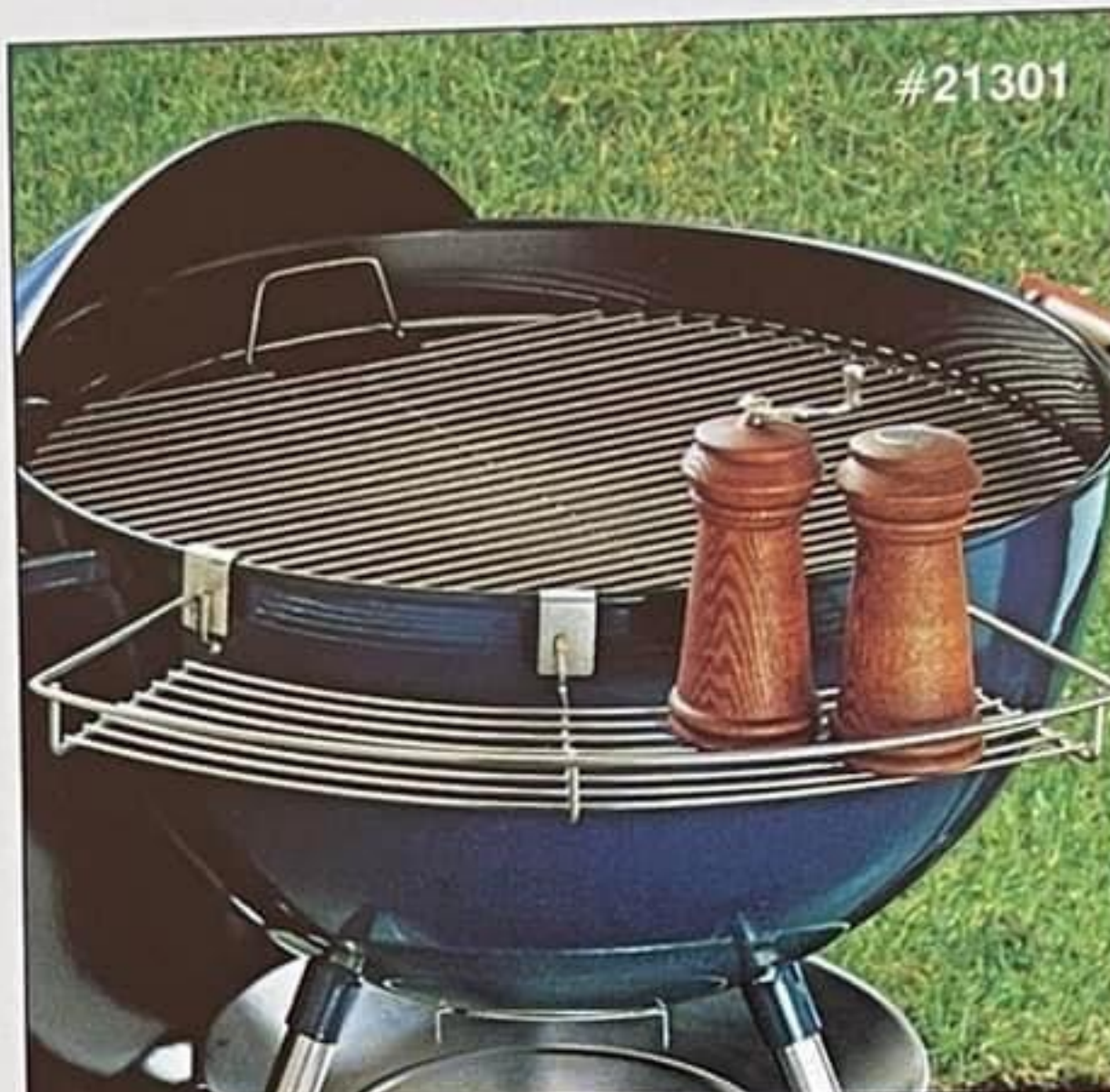
#1201

**Shish Kabob Set**—6 heavy-duty, stainless steel skewers on nickel-plated racks that attach to cooking grill. Fits 18-1/2" diameter kettles and larger. (See page 2 for the "Go-Anywhere" Shish Kabob Set, #2500, a smaller version which fits all Weber grills and kettles.)

#2501

**Wok Pan**—For a popular and economical way to entertain, try stir-frying and steaming meat, fish, or vegetables. Steel pan fits 18-1/2 in. and 22-1/2 in. charcoal and gas kettles. (See page 2 for the Smokey Joe wok, #8300.)

#8301





#8801



**The Starter Set**—Perfect gift item for the new outdoor chef! Includes charcoal rails, roast holder, grill and tool holder, 10 aluminum drip pans. Full-color cartons.

#8801

**Charcoal Rails**—Attach to bottom grill to keep charcoal along sides for indirect cooking. A “must” accessory for every outdoor chef. Fits 18-1/2” diameter kettles and larger.

#3901

**Roast Holder**—This accessory does double duty: it steadies a roast on the grill while cooking, and the built-in handles let you carry the meat to the carving board easily. Fits 18-1/2” diameter kettles and larger.

#9501

**Rib Rack**—Great for cooking large quantities of ribs, chicken halves and extra-thick chops! Sturdy, nickel-plated rack.

**70000, 80000 Series and 22-1/2” gas models:**

#3701

*18-1/2 in. diameter kettles, 30000 Series:*

#3601

**Replacement Grills**—Nickel-plated cooking grill. Now with curved handgrips that hang on kettle handles. *18-1/2 in. diameter kettle cooking grill:*

#70601

*22-1/2 in. diameter kettle cooking grill:*

#70901

**Heavy gauge steel charcoal grill.** *18-1/2 in. diameter kettle charcoal grill:*

#72501

*22-1/2 in. diameter kettle charcoal grill:*

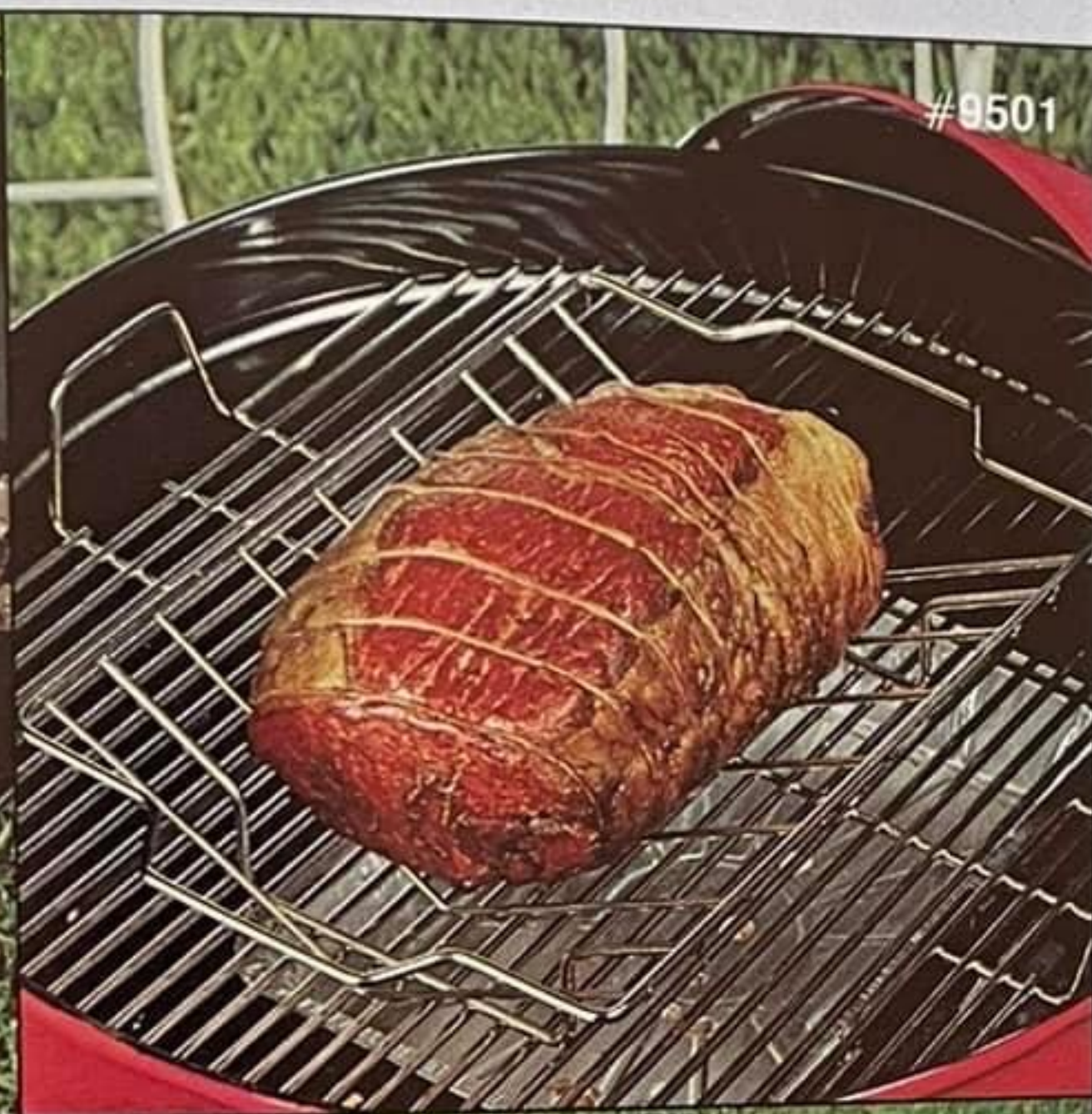
#72801



#3801



#3901



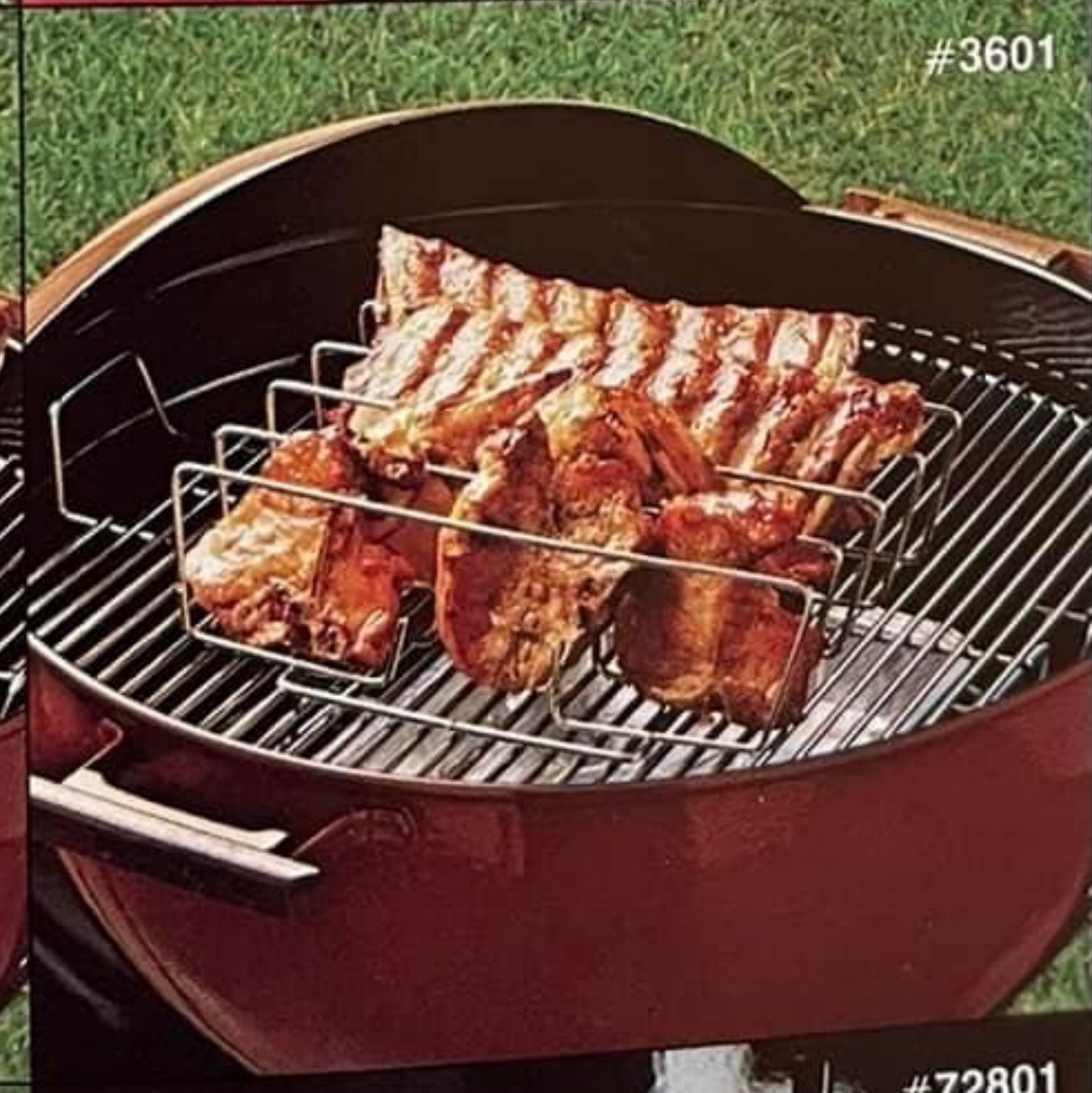
#9501



#1201



#3701



#3601



#8301



#70901



#72801

#4701



#201



#101

**Kettle Covers**—Heavy-duty vinyl covers help keep kettles clean.  
#4301 for 18½ in. diameter kettles.  
#4701 for 22½ in. diameter kettles.

**Deluxe Cookbook**—80-page hard-bound recipe book with over 50 full-color photos and illustrations.  
#101

**Elegant Fare Cookbook**—Spiral hardbound recipe book lies flat. Full color photos and illustrations, menus, cooking charts, detachable recipe cards and filing pockets.  
#201

#3301



**Drip Pans**—10 heavy-gauge pans in polypack. Fits 18-1/2" diameter kettles and larger. (See page 2 for the "Go-Anywhere" drip pans, #3300, a smaller version which fits all Weber grills and kettles.)  
#3301

#21201



#871015



**Hose Adapter Option**—Adapter permits Table Top Gas Grill (#1510) hook-up to a standard 20 lb. L.P. Tank. The flexible hose is 4 feet long, and connects in seconds. UL®/CGA listed. (Tank not included.)  
#871015

#1701



**L.P. Tank**—20 lb. capacity, all-welded steel, 10% safety relief valve.  
#21201

#109901



**Replacement Lava Rock**—Revitalizes Weber Gas Kettles.  
#109901 6½ lbs.  
#109903 4½ lbs.  
#109915 2½ lbs.

**Hickory Chunks**—4-lb. box, for great smoked flavor.  
#1701

#6601



**Charcoal Chest.** Keeps 18 pounds of briquettes handy. Easy to pour. Buy an extra for hickory chunks or sidewalk salt. (Patent #D261604)  
#6601

Be a **Weber Winner**  
in 1983!

# Weber Knives™

## New double-duty tongs and elegant Weber Knife sets pack a lot of add-on profits into a small space.

For 1983, Weber gives you tongs: a distinguished version of the most useful accessory you can sell.

Weber Knife sets in their smart display boxes can be instant sales successes for you. Weber Knives offer more than excellent workmanship and materials. They're designed from the cutting edge up to live up to the Weber reputation for quality.



**NEW!**

#1983

**The Essentials**—Gift boxed, one each chef's knife, carving knife, carving fork, and boning knife. Use and care booklet included.

#1950

**Steak Knives**—Gift boxed, set of four.

#1960

**Double-Duty Tongs**—New! Stainless steel double-duty tongs turn meat without piercing, move briquettes easily. Heavy-duty stainless steel will look good for years. Rich oak grips give you a safe, sure feel.

#1983.

**Open Stock**—All open stock Weber Knives are in vinyl sleeves, suitable for hanging... and consumer storage. Descriptive booklet with use and care information packed with each item.

- A Chef's Knife #1954
- B Carving Fork #1952
- C Carving Knife #1953
- D Boning Knife #1951
- E Sharpening Steel #1971
- F Steak Knife #1961

**Wooden Storage Block**—Made of rock maple, with slots for counter-top storage of The Essentials (#1950). Extra slot for sharpening stick, too.

#1955



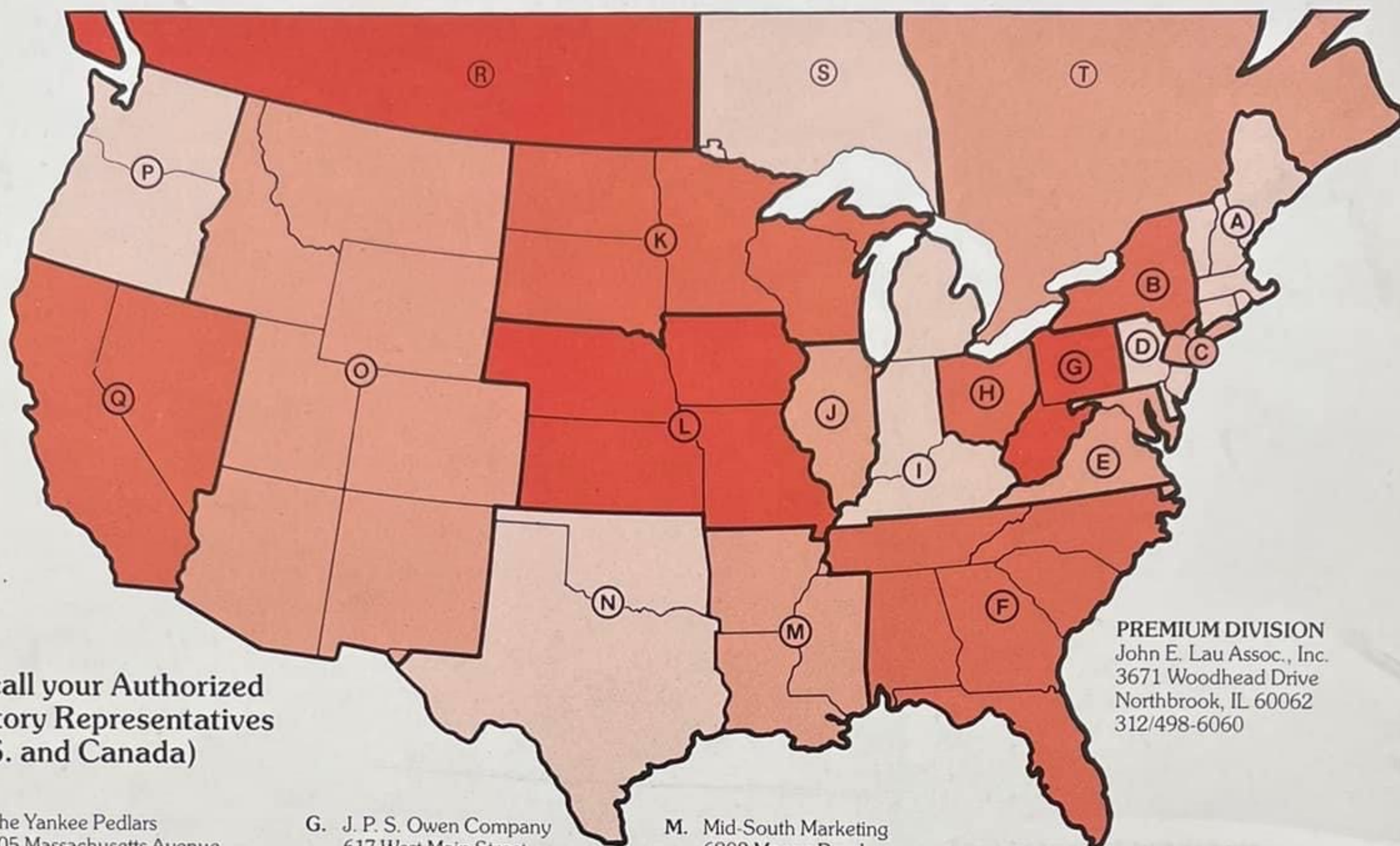
#1955

## Order direct from Weber®

For more information call:

1-800/323-7598. Ask for order desk. In Illinois, call 312/259-5010. Telex 28-1086

Weber-Stephen Products Co. 100 N. Hickory, Arlington Hts., IL 60004





Or call your Authorized  
Factory Representatives  
(U.S. and Canada)

**PREMIUM DIVISION**  
John E. Lau Assoc., Inc.  
3671 Woodhead Drive  
Northbrook, IL 60062  
312/498-6060

- |   |  |   |  |
|---|--|---|--|
| <p><b>A.</b> The Yankee Pedlars<br/>805 Massachusetts Avenue<br/>Lexington, MA 02173<br/>617/861-0530</p> <p><b>B.</b> W. S. Owen Company<br/>306 Lakeside Road<br/>Syracuse, NY 13209<br/>315/468-4264</p> <p><b>C.</b> David S. Lapine<br/>One Park Avenue<br/>New York, NY 10016<br/>212/686-4142</p> <p><b>D.</b> Babcock, Johnson &amp; Weigel, Inc.<br/>2 Davis Avenue<br/>P.O. Box 727<br/>Frazer, PA 19355<br/>215/647-4220</p> <p><b>E.</b> Altemus &amp; Rosedail<br/>1106 Stevenson Lane<br/>Towson, MD 21204<br/>301/828-5161</p> <p><b>F.</b> Nevius Associates<br/>6303 Barfield Road, N.E.<br/>Suite 201<br/>Atlanta, GA 30328<br/>404/255-8421<br/>In Birmingham—205/956-8395<br/>In Charlotte—803/831-2228<br/>In Ft. Lauderdale—305/791-1670<br/>In Jacksonville—904/721-1948<br/>In Largo—813/581-2110<br/>In Miami—305/989-6453</p> | <p><b>G.</b> J. P. S. Owen Company<br/>617 West Main Street<br/>Carnegie, PA 15106<br/>412/279-7500</p> <p><b>H.</b> Heath/Diso Incorporated<br/>223 East Livingston Avenue<br/>Columbus, OH 43215<br/>614/461-8372<br/>In Akron/Cleveland—<br/>216/273-4500</p> <p><b>I.</b> Mid-Central Merchandising &amp;<br/>Marketing<br/>28800 Northwestern Hwy.<br/>Southfield, MI 48034<br/>313/355-0065<br/>In Indiana—317/633-4390</p> <p><b>J.</b> J. J. Stout Co.<br/>1000 W. Touhy<br/>Park Ridge, IL 60068<br/>312/823-1575</p> <p><b>K.</b> Sweeney &amp; White, Inc.<br/>3570 Willow Glen Drive<br/>New Berlin, WI 53151<br/>414/786-3347<br/>In Minneapolis—612/944-6955</p> <p><b>L.</b> Hoskins-Lohner-Schloss, Inc.<br/>4400 West 107th Street<br/>P.O. Box 7086<br/>Overland Park, KS 66207<br/>913/381-5616<br/>In Council Bluffs—712/322-7612<br/>In Des Moines—515/223-4844<br/>In St. Louis—314/567-4710</p> | <p><b>M.</b> Mid-South Marketing<br/>6802 Macon Road<br/>Memphis, TN 38134<br/>901/382-3200<br/>In Little Rock—<br/>501/224-9404<br/>In Lena—601/654-9314</p> <p><b>N.</b> James, Graning and Weaver<br/>Co., Inc.<br/>2824 B. Walnut Hill Lane<br/>Dallas, TX 75229<br/>214/350-7729<br/>In Houston—713/444-6609<br/>In Oklahoma City—<br/>405/799-7749<br/>In San Antonio—512/344-4813</p> <p><b>O.</b> Roy J. O'Donnell Company, Inc.<br/>2256 S. Delaware Street<br/>Denver, CO 80223<br/>303/778-7575<br/>In Phoenix—602/954-8974<br/>In Salt Lake City—<br/>801/487-5664</p> <p><b>P.</b> Yeager-Sleight<br/>2633 Eastlake Avenue, E.<br/>Suite 207<br/>Seattle, WA 98102<br/>206/322-8484<br/>In Portland—503/244-4136</p> | <p><b>Q.</b> Affiliated/Tunney<br/>3855 E. LaPalma<br/>Anaheim, CA 92807<br/>714/632-8850<br/>In Los Angeles—213/680-2371<br/>In Emeryville—415/547-1422</p> <p><b>R.</b> Cal-Ell Sales Agencies, Ltd.<br/>1330 Main Street<br/>North Vancouver, B.C. V7J 1C3<br/>604/980-6051</p> <p><b>S.</b> C. E. F. Marketing Ltd.<br/>3015 Kennedy Road<br/>Toronto, Ontario M1V 1E7<br/>416/291-7731</p> <p><b>T.</b> Roger Boutin Agencies, Inc.<br/>Place Bonaventure<br/>Floor C—50 Calumet<br/>Montreal, Quebec H5A 1A3<br/>514/878-3437</p> <p><b>HAWAII</b> Pacific-Western<br/>Manufacturers Representatives<br/>94-155 Leowaena Street<br/>Waipahu, Hawaii 96797<br/>808/671-2817</p> <p><b>ALASKA</b> Ron Green<br/>717 Barrow Street<br/>Anchorage, Alaska 99501<br/>907/274-6543</p> |
|---|--|---|--|

**Distributors worldwide:** Austria, Belgium, Denmark, Finland, France, Germany, Greece, Italy, The Netherlands, Norway, Portugal, Republic of Ireland, Spain, Sweden, Switzerland, United Kingdom. Also in Australia, Japan, the Caribbean, South Africa, and South America.

Weber, Smokey Joe, The Web, and  are the registered trademarks of Weber-Stephen Products Company. The Essentials, Patio Web, Sidekick, Smokey Mountain Cooker, Weber Eliminator, Weber Knives, Weber One-Touch, WeberWinner, the configuration of the Kettle, and  are trademarks of Weber-Stephen Products Company.