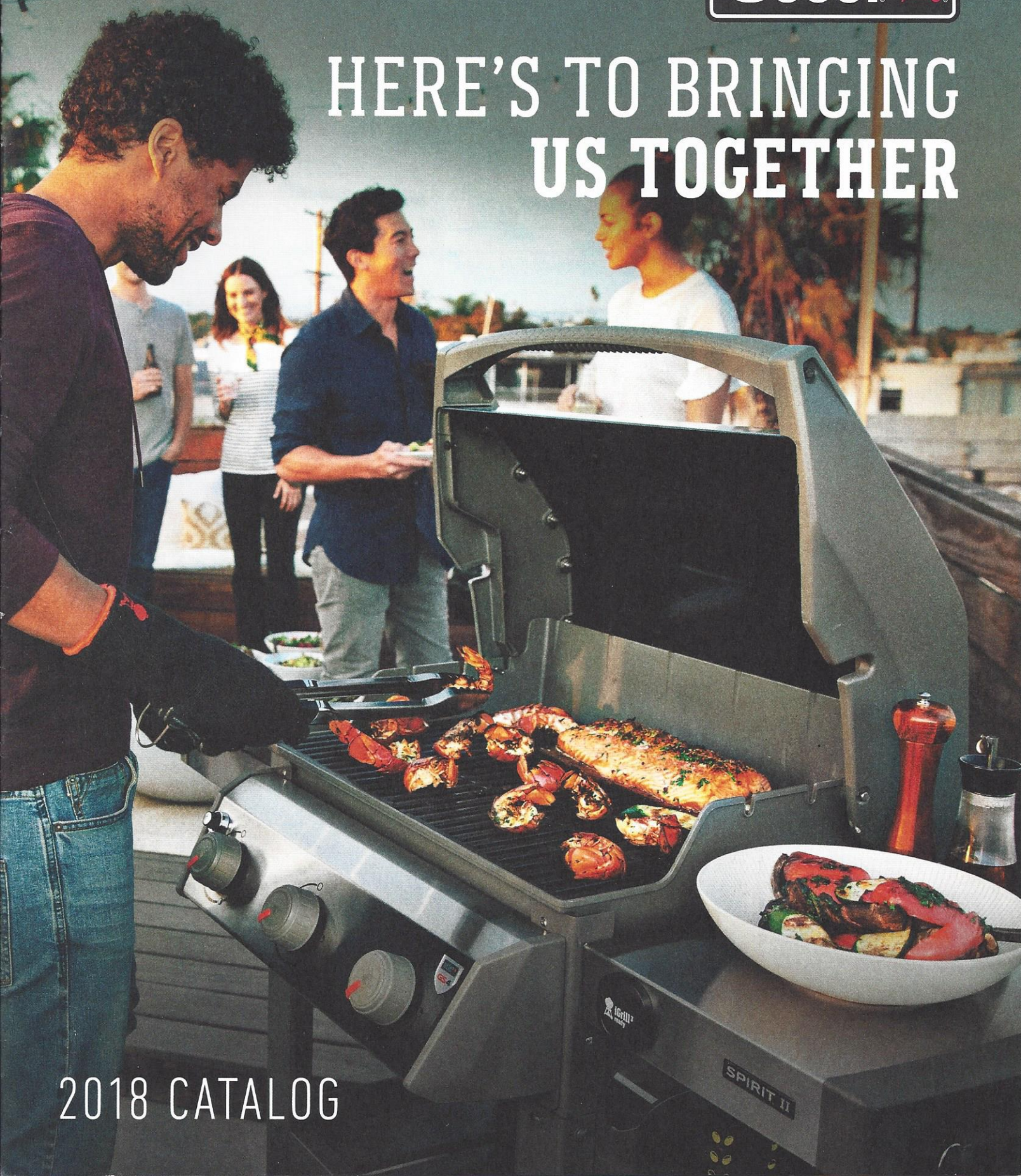




HERE'S TO BRINGING
US TOGETHER



2018 CATALOG



2018 PRODUCTS

FOR MORE INFORMATION VISIT WEBER.COM



FOR LIFE!

NEW FOR 2018

The 10 year, 100% Weber Guarantee means that at Weber, we have your back, not just your backyards in mind when we develop our products. From lid to wheels, it's the warranty that won't let you down. Warranty program on all stand-up gas grill models — Spirit® II, Genesis® II, and Summit®.



SPIRIT® II SERIES



The Spirit® II series of gas grills is available in two models, and four bold colors to bring that added spark to your backyard. Each grill is equipped with the innovative and powerful GS4 grilling system, iGrill 3 capability, and a host of other great features.

GENESIS® II S-310

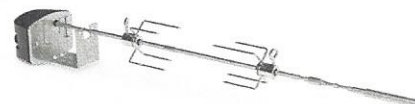
The sleek Genesis® S-310 gas grill is stainless steel on the inside and out, for a look as exceptional as the quality. While the GS4 grilling system works magic under the lid, all that's left for you to do is take that first juicy bite.



ACCESSORIES



7658 GRIDDLE
Fits Spirit® and Spirit® II
200/300 series gas grills



7659 ROTISSERIE
Fits Spirit® and Spirit® II 200/300
series gas grills



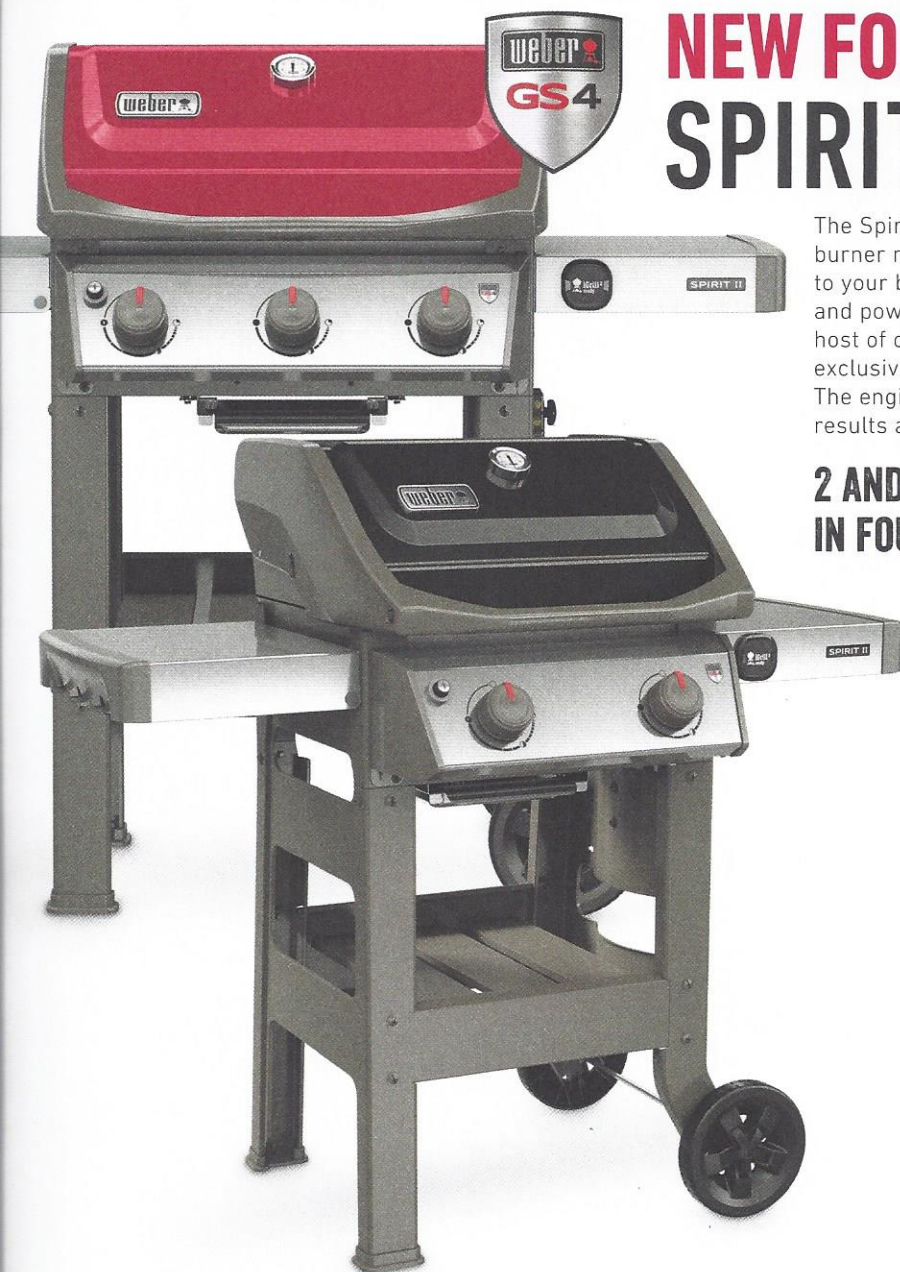
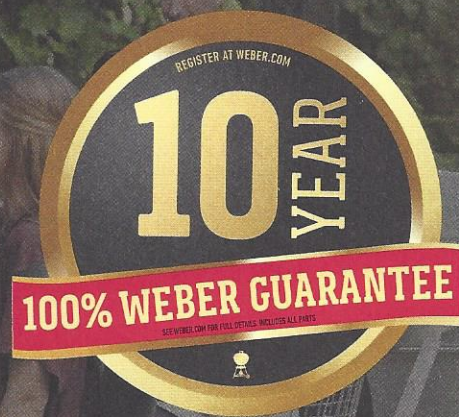
8829
GRILLING STONE

GAS GRILLS

10 YEAR, 100% WEBER GUARANTEE

From lid to wheels, the 10 year, 100% Weber Guarantee means that at Weber, we have your back, not just your backyards in mind when we develop our products. High-quality materials, top-notch manufacturing, and backed by unmatched customer service places our products in a category of their own. We guarantee that should your product have any manufacturing defects within the 10 year time-frame, the part will be replaced at no charge to you- no hassles, just happiness.

WARRANTY PROGRAM ON ALL STAND-UP GAS GRILLS MODELS: SPIRIT® II, GENESIS® II, AND SUMMIT®



NEW FOR 2018 SPIRIT® II SERIES

The Spirit® II series of gas grills is available in two and three burner models, and four bold colors to bring that added spark to your backyard. Each grill is equipped with the innovative and powerful GS4 grilling system, iGrill 3 capability, and a host of other great features. The Spirit® II is powered by the exclusive GS4 Grilling System. GS4 is the core of all models. The engine behind the series. The power that creates superior results and makes life that much easier.

2 AND 3 BURNER MODELS AVAILABLE IN FOUR AMAZING COLORS



BLACK



RED



IVORY



SAPPHIRE



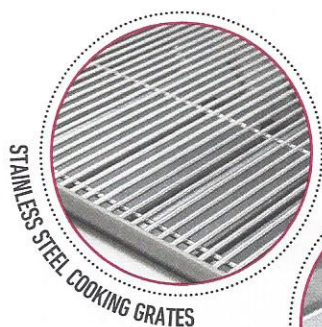
iGRILL 3 COMPATIBLE

The iGrill 3 app-connected thermometer monitors food from beginning to end, displaying the real-time temperature on your mobile device. (Sold separately.)

NEW FOR 2018

GENESIS® II S-310 GAS GRILL

2018 PRODUCT ASSORTMENT



STAINLESS STEEL COOKING GRATES



STAINLESS STEEL FLAVORIZER® BARS



AVAILABLE
2-3-4-6
BURNERS

GENESIS® II SERIES

Accommodating every lifestyle, the Genesis® II ranges in size from 2 to 6 burners, all equipped with the exclusive GS4 Grilling System. The sleek open cart design allows for additional storage. With iGrill 3 compatibility, every griller will be confident their meal will be grilled to perfection every time.



AVAILABLE
2-3-4-6
BURNERS

GENESIS® II LX SERIES

The Genesis® II LX contains all the great features as the Genesis® II, plus a whole lot more. Reduce preheat times and increase searing temperatures with the added High+ heat setting. A built-in side burner is included to cooking versatility. Lighted control knobs and LED lighting assist with night-time grilling. Offered in stainless steel and black porcelain enamel.



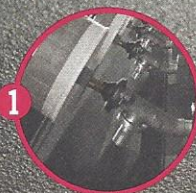
AVAILABLE
4-6
BURNERS

SUMMIT® SERIES

Summit® series gas grills raise the bar in the world of backyard cuisine. A built-in rotisserie system makes rotisserie grilling convenient, easy, and fun. Add a touch of smoke to any dish with the built-in smoker box. The powerful Snap-Jet™ ignition crafts confidence every time you turn the knob. The Summit® line of gas grills boasts an abundance of features and is what every gas grill owner strives for.

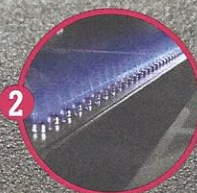


THE ENGINE THAT RUNS THE GRILL



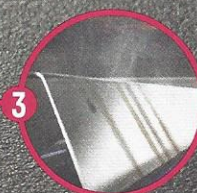
1

1 INFINITY™ IGNITION: The Infinity™ Ignition is guaranteed to ignite every time.



2

2 BURNERS: The burners provide great heat distribution to the cooking grates so foods are grilled evenly.



3

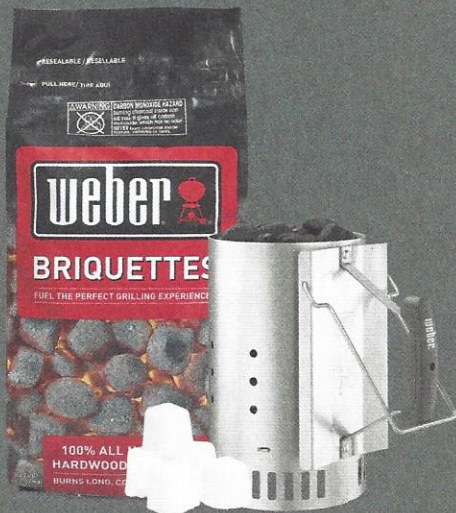
3 FLAVORIZER® BARS: Angled just right to catch drippings that smoke and sizzle, adding that irresistible smoky flavor that we all know and love to your food.



4

4 GREASE MANAGEMENT SYSTEM: Grease is automatically funneled away from the burners, into an easily accessible drip tray, located under the cookbox.

GET GRILLING FASTER!



WEBER BRIQUETTES

Weber Briquettes are made of 100% all natural hardwood with no added chemicals. Burns long with consistent heat, making them perfect for all types of grilling applications. Weather protected bag that is resealable. 20lb bag.

RAPIDFIRE® CHIMNEY STARTER

Cone-shaped charcoal grate exposes more coal edges to the flame, speeding up ignition. The handle and wire fold-out handle provide safer handling.

LIGHTER CUBES

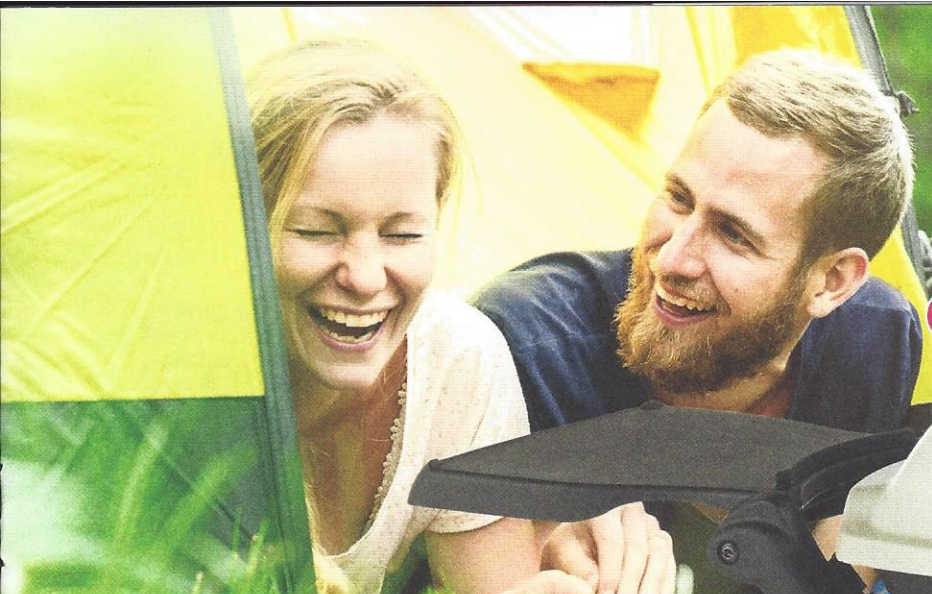
Get grilling sooner with odorless, nontoxic lighter cubes that ignite easily.

CHARCOAL GRILLS

Immerse yourself in authentic grilling ambience - the familiar crackling sound and comforting, nostalgic smell of charcoal grilling. Control the heat, focus on the process, and reward yourself and guests with amazingly good food.



WEBER® Q® 1200
AVAILABLE IN
8 AMAZING COLORS



WEBER Q GRILLS

Discover the best of all worlds with a grill that fits on a small patio, with the power to execute an entire meal. Whether tailgating before the game or throwing burgers on for lunch in the backyard, do it with a Q.



WEBER® Q 1000 SERIES

Small enough to go wherever you go with enough grilling space to concoct a quick meal when back on land.



WEBER® Q 2000 SERIES

Small enough to fit on just about any patio with the power to grill up a full meal. With convenient side tables to place spices and light in weight for easy portability.



WEBER® Q 3000 SERIES

A modern gas grill that sits pretty on your patio, with the power of two burners. Sized to fit in a smaller yard yet big enough to grill an entire roast.

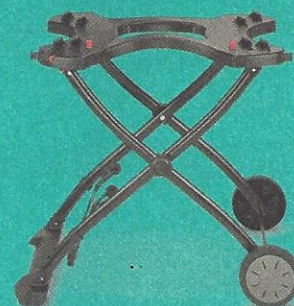
WEBER® Q ELECTRIC SERIES

Plug in and invite friends for a rooftop barbecue, or relax with a drink while steaks grill outside your patio door. Available in two sizes.



ACCESSORIES

SOLD SEPARATELY



WEBER® Q™ PORTABLE CART

Fits Weber® Q® 1000 and 2000 gas and electric series grills.

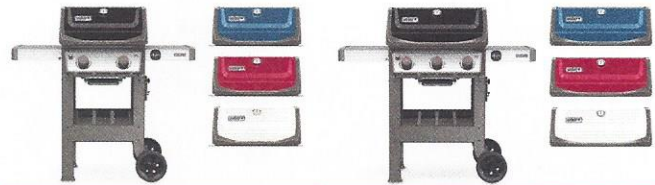


WEBER® Q™ CART

Fits Weber® Q® 2000 gas and electric series grills.

SPIRIT® II GAS GRILLS

FOR A LOOK AS BOLD AS THE FOOD



	E-210	E-310
GRILLING SYSTEM		
GS4 Infinity™ Ignition	✓	✓
GS4 Burners	✓	✓
GS4 Porcelain-Enameled Flavorizer® bars	✓	✓
GS4 Grease Management System	✓	✓
Porcelain-Enameled, Cast Iron Cooking Grates	✓	✓
Main burners: BTU-per-hour input	26,500	30,000
Stainless steel heat deflector	✓	✓
Primary cooking area (square inches)	360	424
Warming rack cooking area (square inches)	90	105
Total cooking area (square inches)	450	529
CONSTRUCTION		
Porcelain-enameled lid with thermometer	✓	✓
Stainless steel work surfaces	2	2
Fold down left side table	✓	✓
Open cabinet for storage	✓	✓
2 large wheels	✓	✓
FEATURES		
iGrill 3 compatible (sold separately)	✓	✓
Fuel gauge (LP models only)	✓	✓
Tool hooks	6	6
COLOR / MODEL #		
Black (LP)	44010001	45010001
Black (NG)	48010001	49010001
Sapphire (LP)	44020001	45020001
Red (LP)	44030001	45030001
Ivory (LP)	44060001	45060001

GENESIS® II GAS GRILLS

LET GOOD FOOD BRING YOU CLOSER

**E-210****E-310****S-310****E-410****E-610****GRILLING SYSTEM**

GS4 Infinity™ Ignition	✓	✓	✓	✓	✓
GS4 High Performance Burners	✓	✓	✓	✓	✓
GS4 Porcelain-Enameled Flavorizer® bars	✓	✓		✓	✓
GS4 Stainless Steel Flavorizer® bars			✓		
GS4 Grease Management System	✓	✓	✓	✓	✓
Porcelain-Enameled, Cast Iron Cooking Grates	✓	✓		✓	✓
7mm Stainless Steel Cooking Grates			✓		
Main burners: BTU-per-hour input	26,000	37,500	37,500	48,000	60,000
Stainless steel heat deflectors	✓	✓	✓	✓	✓
Tuck-Away™ Warming Rack	✓	✓	✓	✓	✓

COOKING AREA

Primary cooking area (square inches)	380	513	513	646	770
Tuck-Away™ Warming Rack area (square inches)	114	156	156	198	228
Total cooking area (square inches)	494	669	669	844	998

CONSTRUCTION

Porcelain-enameled lid with thermometer	✓	✓	✓	✓	✓
Stainless steel work surfaces	2	2	2	2	2
Fold down left side table	✓	✓	✓		
Open cabinet for storage	✓	✓	✓	✓	✓
2 swivel casters and 2 large wheels	✓	✓	✓	✓	✓

FEATURES

iGrill 3 compatible (sold separately)	✓	✓	✓	✓	✓
Fuel gauge (LP models only)	✓	✓	✓	✓	✓
Tool hooks	6	6	6	6	6

COLOR / MODEL #

Black (LP)	60010001	61010001		62010001	63010001
Black (NG)	65010001	66010001		67010001	68010001
Copper (LP)				62020001	
Crimson (LP)				62030001	
Smoke (LP)				62050001	
Stainless Steel (LP)			61000001		
Stainless Steel (NG)			66000001		

DIMENSIONS (LID OPEN, TABLES OUT)

Height (inches)	61	61	61	61	61
Width (inches)	47	54	54	61	68
Depth (inches)	31	31	31	31	31

GENESIS® II LX GAS GRILLS

UNLEASH YOUR INNER BACKYARD CHEF



E: Black
S: Stainless Steel

E-240 / S-240

E-340 / S-340

E-440 / S-440

E-640 / S-640

GRILLING SYSTEM

GS4 Infinity™ Ignition	✓	✓	✓	✓
GS4 High Performance Burners	✓	✓	✓	✓
GS4 Stainless Steel Flavorizer® bars	✓	✓	✓	✓
GS4 Grease Management System	✓	✓	✓	✓
7mm Stainless Steel Cooking Grates*	✓	✓	✓	✓
Main burners: BTU-per-hour input	29,000	43,500	52,000	72,000
Side burner: BTU-per-hour input	12,000	12,000	12,000	12,000
High+™ burner	✓	✓	✓	✓
Stainless steel heat deflectors	✓	✓	✓	✓
Tuck-Away™ Warming Rack	✓	✓	✓	✓

COOKING AREA

Primary cooking area (square inches)	380	513	646	770
Tuck-Away™ Warming Rack area (square inches)	114	156	198	228
Total cooking area (square inches)	494	669	844	998

CONSTRUCTION

Porcelain-enameled lid with thermometer	✓ (E-240)	✓ (E-340)	✓ (E-440)	✓ (E-640)
Stainless steel lid with thermometer	✓ (S-240)	✓ (S-340)	✓ (S-440)	✓ (S-640)
Stainless steel work surfaces	2	2	2	2
Fold down left side table	✓	✓		
Enclosed cabinet with doors for storage	✓	✓	✓	✓
2 swivel casters and 2 large wheels	✓	✓	✓	✓

FEATURES

iGrill 3 compatible (sold separately)	✓	✓	✓	✓
Lighted Control Knobs	✓	✓	✓	✓
Handle Light	1	1	1	2
LED Fuel gauge (LP models only)	✓	✓	✓	✓
Tool hooks	3	3	3	3

COLOR / MODEL

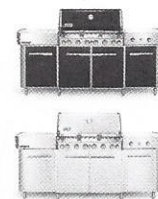
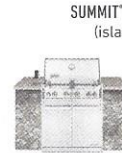
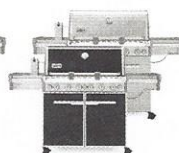
Black (LP)	60014001	61014001	62014001	63014001
Black (NG)	65014001	66014001	67014001	68014001
Stainless steel (LP)	60004001	61004001	62004001	63004001
Stainless steel (NG)	65004001	66004001	67004001	68004001

DIMENSIONS (LID OPEN, TABLES OUT)

Height (inches)	63	63	63	63
Width (inches)	52	59	65	72
Depth (inches)	33	33	33	33

SUMMIT® GAS GRILLS

FOR FIRST IMPRESSIONS AND LASTING IMPRESSIONS



SUMMIT® BUILT-IN GAS GRILLS
(island not included)

E: Black
S: Stainless Steel

	E-470 / S-470	E-670 / S-670	S-460	S-660	GRILL CENTER
COOKING SYSTEM					
Stainless steel burners	4	6	4	6	6
9 mm diameter stainless steel rod cooking grates	✓	✓	✓	✓	✓
Stainless steel Flavorizer® bars	✓	✓	✓	✓	✓
Main burners: BTU-per-hour input	48,800	60,000	48,800	60,000	60,000
Side burner: BTU-per-hour input	12,000	12,000			27,000
Sear Station® burner: BTU-per-hour input	10,600	10,600	10,600	10,600	10,600
Smoker burner: BTU-per-hour input	6,800	6,800	6,800	6,800	6,800
Rear-mounted infrared rotisserie burner: BTU-per-hour input	10,600	10,600	10,600	10,600	10,600
Tuck-Away™ rotisserie system with flip-up motor and separate spit and fork storage in the enclosed cart	✓	✓			✓
Snap-Jet™ individual burner ignition system	✓	✓	✓	✓	✓
COOKING AREA					
Primary cooking area (square inches)	468	624	468	624	624
Warming rack area (square inches)	112	145	112	145	145
Total cooking area (square inches)	580	769	580	769	769
CONSTRUCTION					
Porcelain-enameled lid with thermometer	✓ (E-470)	✓ (E-670)			✓ (BLACK)
Stainless steel lid with thermometer	✓ (S-470)	✓ (S-470)	✓	✓	✓ (STAINLESS)
Enclosed cart with painted steel doors	✓ (E-470)	✓ (E-670)			✓ (BLACK)
Enclosed cart with stainless steel doors	✓ (S-470)	✓ (S-470)			✓ (STAINLESS)
Adjustable stainless steel wire shelves					4
Removable stainless steel grease tray with catch pan	✓	✓	✓	✓	✓
SlideFrame™ design			✓	✓	
2 locking swivel casters and 2 swivel casters	✓	✓	✓	✓	
8 adjustable stainless steel legs					✓
FEATURES					
LED tank scale display and fuel gauge (LP models only)	✓	✓			✓
Handle light(s)	1	2	1	2	2
Lighted control knobs	✓	✓	✓	✓	✓
Tool hooks	6	6			6
Stainless steel paper towel holder					✓
Premium cover included			✓	✓	
COLOR / MODEL #					
Black (LP)	7171001	7371001			291101
Black (NG)	7271001	7471001			292101
Stainless steel (LP)	7170001	7370001	7160001	7360001	291001
Stainless steel (NG)	7270001	7470001	7260001	7460001	292001
DIMENSIONS (LID OPEN)					
Height (inches)	57.1	57.1	49.5	49.5	59
Width (inches)	66	74.1	34	42	91.1
Depth (inches)	30	30	31	31	28.5

CHARCOAL GRILLS

FROM ONE GENERATION TO ANOTHER



	ORIGINAL KETTLE™ CHARCOAL GRILL				MASTER-TOUCH™	PERFORMER™ CHARCOAL GRILL			RANCH™ KETTLE
	18 INCH	22 INCH	22 INCH PREMIUM	26 INCH PREMIUM		22 INCH	22 INCH PREMIUM	22 INCH DELUXE	
COOKING SYSTEM									
Porcelain-enameled bowl and lid	✓	✓	✓	✓	✓	✓	✓	✓	✓
Plated steel cooking grate	✓	✓							
Plated steel hinged cooking grate			✓						
Gourmet BBQ System™ hinged cooking grate					✓	✓	✓	✓	
Stainless steel hinged cooking grate				✓					✓
Steel charcoal grate	✓	✓	✓	✓	✓	✓	✓	✓	✓
Electronic Touch-N-Go™ gas ignition system								✓	
COOKING AREA									
Warming rack area (square inches)					80				
Total cooking area (square inches)	240	363	363	508	443	363	363	363	1,104
CONSTRUCTION									
Heavy-duty steel cart frame						✓	✓	✓	✓
Painted, metal fold-down table						✓			
Painted, metal work table							✓	✓	
One-Touch™ cleaning system	✓	✓	✓	✓	✓	✓	✓	✓	
Aluminum ash catcher	✓	✓							✓
Removable, high-capacity aluminum ash catcher			✓	✓	✓	✓	✓	✓	
Wire bottom shelf						✓	✓	✓	
Weather-protected CharBin™							✓	✓	
Rust-resistant damper(s)	1	1	1	1	1	1	1	1	4
Glass-reinforced nylon handle with tool hooks			2	1	1				
Spring clip/push pin leg assembly	✓	✓	✓	✓	✓				
Durable all-weather wheels	2	2	2						
Durable all-weather wheels with full wheel hubs				2	2	2	2	2	2
Locking casters						2	2	2	2
FEATURES									
Built-in lid thermometer			✓	✓	✓	✓	✓	✓	
Removable backlit LCD cook timer							✓	✓	
Char-Basket™ charcoal fuel holders				2	2		2	2	
Tool hooks						3	3	3	3
Angled lid hook inside grill lid	✓	✓	✓						
Tuck-Away™ lid holder				✓	✓	✓	✓	✓	✓
COLOR / MODEL #									
Black	441001	741001	14401001	16401001	14501001	15301001	15401001	15501001	60020
Copper			14402001				15402001	15502001	
Green			14407001				15407001	15507001	
DIMENSIONS									
Height (inches)	35	38.5	38.5	42.3	42	43.5	43.5	43.5	42
Width (inches)	23	25	27	32	29.5	42	48	48	37.75
Depth (inches)	18.5	22.5	22.5	24.4	24	29	30	30	44.75

PORTABLE GRILLS



	SMOKEY JOE® 14 INCH	14 INCH PREMIUM	JUMBO JOE®	GO-ANYWHERE CHARCOAL	GAS
COOKING SYSTEM					
Porcelain-enameled bowl and lid	✓	✓	✓	✓	✓
Plated steel cooking grate	✓	✓	✓	✓	
Porcelain-enameled, cooking grate					✓
Steel charcoal grate	✓	✓	✓	✓	
Stainless steel burner					1
Main burner: BTU-per-hour input					6,800
Push button igniter					✓
Total cooking area (square inches)	147	147	240	160	160
CONSTRUCTION					
Rust-resistant damper(s)	2	1	2	2	
Glass-reinforced nylon handle	1	1	1	1	1
Tuck-N-Carry® lid lock/lid holder		✓	✓		
Plated steel legs pivot to lock lid in place for carrying				✓	✓
COLOR / MODEL #					
Black	10020	40020	1211001	121020	1141001
DIMENSIONS					
Height (inches)	17	17	19.75	14.5	14.5
Width (inches)	14.25	14.25	20.5	21	21
Depth (inches)	14.5	16.5	19.75	12.25	12.25

SMOKERS



	14 INCH SMOKER	18 INCH SMOKER	22 INCH SMOKER
COOKING SYSTEM			
Porcelain-enameled bowl and lid	✓	✓	✓
Porcelain-enameled water pan	✓	✓	✓
Porcelain-enameled charcoal chamber	✓	✓	✓
Plated steel cooking grate	✓	✓	✓
Total cooking area (square inches)	286	481	726
CONSTRUCTION			
Rust-resistant damper(s)	4	4	4
Glass-reinforced nylon lid handle	✓	✓	✓
Rust-resistant aluminum fuel door	✓	✓	✓
Rust-resistant aluminum heat shield	✓	✓	✓
FEATURES			
Built-in lid thermometer	✓	✓	✓
Silicone temperature grommet	✓	✓	✓
Premium-grade cover included	✓	✓	✓
Owner's guide	✓	✓	✓
Limited warranty	✓	✓	✓
COLOR / MODEL #			
Black	711001	721001	731001
DIMENSIONS			
Height (inches)	31.4	41	48.5
Width (inches)	14.75	19	23
Depth (inches)	14.75	21	24

WEBER® Q® GRILLS

AT HOME OR ON THE GO



Q® 1400	Q® 2400	Q® 1000	Q® 1200	Q® 2000	Q® 2200	Q® 3200
---------	---------	---------	---------	---------	---------	---------

COOKING SYSTEM

Stainless steel burner(s)			1	1	1	1	2
Porcelain-enameled, cast-iron cooking grates	✓	✓	✓	✓	✓	✓	✓
Main burners: BTU-per-hour input			8,500	8,500	12,000	12,000	21,700
Watts/Volts	1560 / 120	1560 / 120					
Infinite heat control settings	✓	✓					
Infinite control burner valve(s)			✓	✓	✓	✓	✓
Push button ignition system			✓		✓		
Electronic ignition system				✓		✓	✓

COOKING AREA

Primary cooking area (square inches)							393
Warming rack area (square inches)							75
Total cooking area (square inches)	189	280	189	189	280	280	468

CONSTRUCTION

Cast aluminum lid and body	✓	✓	✓	✓	✓	✓	✓
Two folding work tables				✓	✓	✓	
Two removable folding work tables							✓
Removable catch pan	✓	✓	✓	✓	✓	✓	✓
Built-in lid thermometer				✓		✓	✓
Aluminum heat retention liner	✓	✓					
Q™ cart							✓

FEATURES

Grill Out® handle light							1
Hose and regulator for 20-lb LP tank							✓
6-foot grounded electrical cord	✓	✓					

COLOR / MODEL

Titanium (LP)			50060001	51060001	53060001	54060001	57060001
Titanium (NG)							57067001
Black (LP)				51010001			
Blue (LP)				51080001			
Fuchsia (LP)				51210001			
Green (LP)				51070001			
Orange (LP)				51190001			
Purple (LP)				51200001			
Red (LP)				51040001			
Dark gray	52020001	55020001					

DIMENSIONS (LID OPEN, TABLES OUT)

Height (inches)	23.5	26	23.5	24.6	26	26	55.5
Width (inches)	27	31.5	27	40.9	51.4	51.4	50.2
Depth (inches)	20.5	25.1	20.5	20.5	24.3	25.1	30

ACCESSORIES

The easiest way to up your grilling game is to start experimenting with accessories. All it takes are the proper tools to turn your backyard into a fully functioning outdoor kitchen. Explore Weber's broad range of grilling tools and let the fun unfold.



COOKING



PREP AND SERVE



CARE



OUTDOOR LIFESTYLE



iGrill APP CONNECTED THERMOMETERS

PERFECTLY GRILLED FOOD EVERY TIME

Whether you're a self-proclaimed grill master or just digging in, everyone can benefit from a good thermometer and timer. If you're looking for the best and smartest, the Weber iGrill app-connected thermometer may be your answer. It makes grilling easier, more convenient, and a whole lot smarter.



iGRILL MINI

One Pro Meat Probe included
Battery included
Use with any grill



iGRILL 2

Four probe capability
Two Pro Meat Probes included
Batteries included
Use with any grill



iGRILL 3

Four probe capability
Two Pro Meat Probes included
Batteries included
Designed exclusively for Spirit® II, Genesis® II and Genesis® II LX gas grills

1

DOWNLOAD
THE FREE APP

2

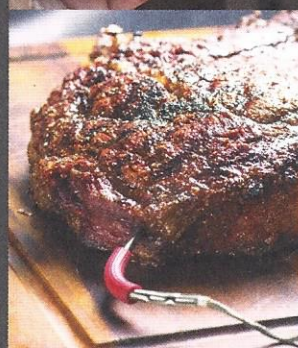
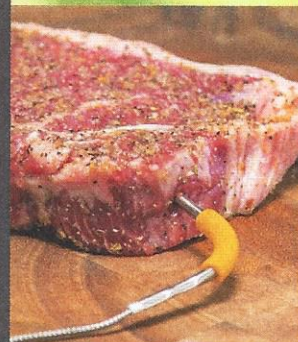
INSERT
MEAT PROBE

3

SET UP AND
MONITOR

4

PERFECT
RESULTS



COOKING



NEW

8829 GRILLING STONE

Versatile stone is ideal for baking pizzas, cookies, breads and pastries. Safe for use with gas, charcoal and electric grills.



GRILLING TOOLS

Only the best grilling tools will do for the backyard hero. Variety of spatulas, tongs, basting brushes, skewers and tool sets.



BARBECUE RACKS AND ROASTERS

Whether grilling racks of ribs, or roasting a mouthwatering chicken with a poultry roaster, we've got the best accessory for you.



BASKETS AND PANS

With an array of grilling baskets and pans to choose from, you'll have everything you need to create whatever your palate desires.



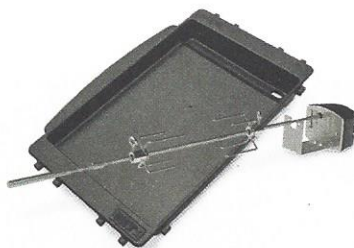
6750 INSTANT READ THERMOMETER

Fast, accurate readings in Fahrenheit or Celsius



CHARCOAL ACCESSORIES

Pair the briquettes with any of our charcoal accessories and you're one step closer to BBQ success!



GRIDDLES AND ROTISSERIES

Travel no further than your backyard to feast on a whole rotisserie chicken, or fire up your grill, and prepare breakfast on your griddle.

NEW
7425 WOK



GOURMET BBQ SYSTEM®

Grill anything from pizza, casseroles, or even an early morning breakfast - all from the comfort of your backyard.

PREP AND SERVE



PIZZA ACCESSORIES

Sprinkle some cornmeal, roll out your dough, and top it with meats, veggies, or whatever your culinary heart desires, and grill some pizza!



6483 BURGER PRESS

Designed to make a dimple in patties for flat, uniform burgers. Press designed to make both 1/2 and 1/4 pound patties.



PREMIUM GLOVES

The Weber Premium Gloves protect your hands from a hot grill, and have a silicone palm for gripping your most prized grilling tools.



APRONS

Embrace your inner grill master and feel like a pro with a Weber Apron. Available in black or red.



BARBECUE MITT

The Weber Barbecue Mitt keeps your hand and forearm safe from the heat of your grill.



WOOD CHUNKS AND CHIPS

By simply adding some flavored wood chunks or chips to the recipe, your food will be taken to a completely new level of delicious.



17302 CEDAR PLANKS

Adding a touch of cedar creates a wonderful smoky taste, and the plank prevents your delicate fillet from sticking to the cooking grate.



7576 SMOKER BOX

Set the Smoker Box right on top of your cooking grates to transform any gas or charcoal grill into a smoke cooker.

CARE



GRILL BRUSH - BAMBOO

Use the Grill Brush to clean your cooking grates before each use so that each meal is as delicious as the next. Available in 12 and 18 inch.



GRILL BRUSH - WIRE

Use the Grill Brush to clean your cooking grates before each use so that each meal is as delicious as the next. Available in T-shaped (12 and 21 inch), detailing, and Y-shaped.



DRIP PANS

Drip pans line the drip tray of your grill to make the disposal of grease easy and clean.



NEW

7137 TANK COVER

Fits standard size 20 lb. LP tank (tank sold separately).



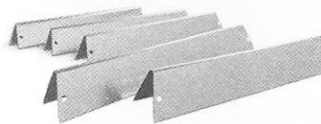
GAS GRILL COVERS

The lightweight yet durable Premium Grill Cover makes it easy to take on and off your grill.



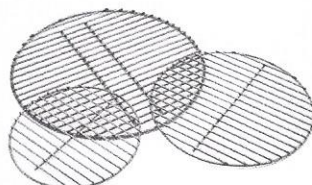
CHARCOAL GRILL COVERS

The lightweight yet durable Premium Grill Cover makes it easy to take on and off your charcoal grill.



GAS GRILL REPLACEMENT PARTS

A full assortment of replacement parts is available to keep your gas grill performing.



CHARCOAL GRILL REPLACEMENT PARTS

A full assortment of replacement parts is available to keep your charcoal grill performing.

OUTDOOR LIFESTYLE



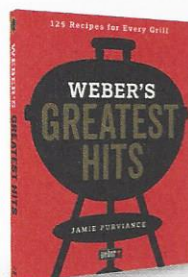
CARTS

Whether portable or stationary, our carts are designed to custom fit our Q® grills and make grilling on-the-go or at home as convenient as possible.



LIGHTS

Grill lights illuminate the cooking grate so that you can see your food in the same light, no matter what time of day.



COOKBOOKS

Weber is famous for creating mouthwatering and inspiring cookbooks, and our author Jamie Purviance has been the source of inspiration for grillers worldwide.



EXPLORE OUR FULL LINE
OF ACCESSORIES ONLINE

WEBER.COM



WEBER.COM



weberbbq



webergrills



webergrills



webergrills



grillwithweber