

CONTROL HEATING CUSTOMER
 ANYTHING USESIMPLICITY
 WELL FASHION EASY LONG
 ENGINEERING FLAVOR ROUND
 ACCESSORIES VARIETY WORK
 COOKS MOKE STILL GOING
 LWAYS STYLE BEST OTHERS
 ESIGN TIME LOVE FOREVER CLEAN
 HING DEPENDABLE WELL FOOD
 TASTES STRONG TEMPERATURES
 WORKS FUN BETTER
 VERSATILE'S
 PERFORMANCE AMERICAN
 SOLID PREDICTABILITY
 USA CONSTRUCTION OUTLASTS
 PERFECT SERVICE LIFETIME
 COMPARES EVERY
 DURABILITY HEAT
 GRILLING SUPERIOR
 NOTHING BEST
 TASTES ACCESSORIES FOREVER
 CRAFTSMANSHIP CONSISTENCY
 LASTING WAY
 YEARS CONTROL STYLE
 STILL WELL SUPERIOR
 CONTROL SUPPORT
 MADE
 CRAFTSMANSHIP OF
 TEMPERATURE ENGINEERING
 BEST PRODUCT BUILT
 QUALITY FLAVOR
 LIFETIME ROUND PERFORMANCE AMERICAN CLEAN
 USA COOK STRONG BETTER
 DESIGN POWER MADE
 CRAFTSMANSHIP OF
 TEMPERATURE ENGINEERING
 BEST PRODUCT BUILT
 QUALITY FLAVOR
 LIFETIME ROUND PERFORMANCE AMERICAN CLEAN
 DEDICATION RELIABLE
 SOLID STYLE FOOD
 WORKS MATERIALS
 STURDY STILL
 HEATING WAY
 TRUST NAME STILL
 CRAFTSMANSHIP OF
 TEMPERATURE ENGINEERING
 BEST PRODUCT BUILT
 QUALITY FLAVOR
 LIFETIME ROUND PERFORMANCE AMERICAN CLEAN
 ONE LASTING SUPERIOR PERFECT COMPARES ENGINEERING
 PENDABLE BUILT VARIETY DEDICATION
 ENGINEERING LOVE
 TRUST SMOKE FLAVOR
 LONG SUPERIOR

2013 WEBER PRODUCTS





TABLE OF CONTENTS

WEBER® MILESTONES

Weber® Milestones	2
-------------------	---

WEBER® Q® GRILLS

Weber® Q® electric series	6
Weber® Q® 100 series	8
Weber® Q® 200 series	10
Weber® Q® 300 series	12

WEBER® GAS GRILLS

Spirit® 200™ series	16
Spirit® E-300™ series	18
Genesis® E-300™ series	20
Genesis® S-300™ series	22
Genesis® Island Cabinetry	24
Summit® E-400™ series	26
Summit® E-600™ series	28
Summit® S-400™ series	30
Summit® S-600™ series	32
Summit® Built-In series	34

WEBER® CHARCOAL GRILLS

Smokey Joe®	38
Jumbo Joe®	40
Go-Anywhere®	42
One-Touch® Silver	44
One-Touch® Gold	46
26.75 inch One-Touch® Gold	48
Performer® Silver charcoal grill	50
Performer® Gold charcoal grill	52
Performer® Platinum charcoal grill	54
Ranch® Kettle	56
Smokey Mountain Cooker™ Smoker	58

WEBER ACCESSORIES

Weber Style™ accessories	62
Weber Original™ accessories	64
Weber® accessories	70
Weber® cookbooks	76



1950

1952 | Weber® kettle created

1956 | George Stephen redesigns the kettle to look more like today's iconic shape

1959 | Weber Brothers acquired Metal Works



1960

1960 | Weber introduces the Galley-Que™

1965 | Weber introduces the Ranger™

1967 | Weber introduces the Seville™



GEORGE'S BARBECUE KETTLE
Be a Real Chef This Easy Way!
 Seals in ribs, steaks and roasted pieces of meat, poultry, fish and game. Cover and dampers provide uniform heat and permit charcoal to broil everything perfectly, without flames, for that delicious smacked-in flavor. Charcoal can be used for reuse by sliding cover and dampers. Kettle diameter 22 1/2" - stands fits inside kettle for easy storage.
 A Lifetime of Getting Pleasure for \$29.95
 Steel stands \$4.00. For C.O.D.'s Register check collect.
WEBER BROTHERS METAL WORKS
 Quality Products since 1890
 708 N. Jefferson St., Chicago 6, Ill.

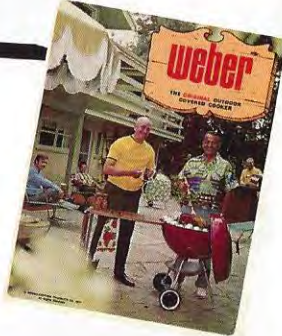


1970

1970 | Weber brand gains national recognition

1971 | Weber introduces the first gas grill

1973 | Weber introduces the first electric grill



1980

1981 | Weber introduces the Smokey Mountain Cooker™ smoker

1983 | Weber-Stephen Products Co. factory moves from Arlington Heights to Palatine, IL

1985 | Weber introduces the Genesis® gas grill

1987 | Weber expands the Genesis® line by adding two-burner models



1990

1990 | The Performer® charcoal grill is introduced

1993 | George Stephen passes away and his son Jim takes over

1995 | The Grill Out® Times newsletter is published

1997 | The Huntley, Illinois, factory and warehouse opens

1999 | Weber enters the publishing market



2000

2001 | Weber publishes *Weber's Big Book of Grilling™*

2002 | Weber introduces Weber® Q® portable gas grills

2005 | Weber publishes *Weber's Real Grilling™*

2007 | Largest new product launch brings 14 new gas grills to market

2009 | Weber introduces the Weber® Q® electric grill

2009 | Weber's On the Grill™ app for iPhone and iPad launches

2009 | *Weber's Real Grilling™* cookbook sells millionth copy



WEBER® Q® GRILLS



5 YEARS

Aluminum castings: 2 years on paint (excluding fading or discoloration)

5 YEARS

Thermoplastic/thermoset parts (excluding fading)

2 YEARS

Stationary cart

2 YEARS

All remaining parts

ELECTRIC SERIES



WEBER® Q® 140 ELECTRIC GRILL



WEBER® Q® 240 ELECTRIC GRILL

100 SERIES



WEBER® Q® 100 GAS GRILL



WEBER® Q® 120 GAS GRILL

200 SERIES



WEBER® Q® 200 GAS GRILL



WEBER® Q® 220 GAS GRILL

300 SERIES



WEBER® Q® 300 GAS GRILL



WEBER® Q® 320 GAS GRILL



WEBER® Q® ELECTRIC SERIES

Just plug it in, grill it up, and enjoy every minute of it.



6549 | Weber® Q® Rolling Cart
This ingenious, quick-folding cart can be used as a grill stand or as a caddy to transport the Weber® Q® grill.



6554 | Weber® Q® Premium Cover
Heavy-duty cover protects Weber® Q® grill from the elements. Protects Weber® Q® grills when they are used with the Weber® Q® rolling cart (6549).

EXTERIOR DIMENSIONS AND GRILLING SYSTEM

Gas Grill	Dimensions (inches-lid open)	Total Cooking Area (square inches)	Cooking Grates	Watts/Volts
Weber® Q® 140	23.5 H x 27 W x 20.5 D	189	porcelain-enameled, cast-iron	1560/120
Weber® Q® 240	26 H x 31.5 W x 25.1 D	280	porcelain-enameled, cast-iron	1560/120

For further information about these grills, see the specification table in the back of this brochure.

Accessories sold separately.

WEBER® Q® 140 ELECTRIC GRILL

dark gray item: 522001



A Porcelain-Enameled, Cast-Iron Cooking Grate
Heat is conducted evenly across the entire surface of the porcelain-enameled, cast-iron cooking grate.

B Heat Retention Liners
Two aluminum heat retention liners keep the heat from escaping and help to provide even cooking temperatures.

C Infinite Heat Control Settings
With infinite heat control settings, the Weber® Q® electric grill gets hot enough to sear a steak.

D 6-Foot Grounded Cord
Provides a safe and easy connection to your power source.

E Removable Catch Pan
A removable catch pan makes clean-up easy.

UPGRADE WEBER® Q® 240 ELECTRIC GRILL

dark gray item: 592001

Includes all the features of the Weber® Q® 140 electric grill plus:

F Larger Cooking Area
With 280 square inches of total cooking area, there's plenty of room.



2013 WEBER® Q® GRILLS **7**



A



B



C



E



WEBER® Q® 100 SERIES

You can now have all the fresh, grilled flavors you love anytime, anywhere.



6550 | Weber® Q® Grill Cover
Fitted, heavy-duty cover. Elastic side bands and front draw cord keep it secure. Fits Weber® Q® 100 series grills.



6470 | Weber Original™ Small Stainless Steel Fish Basket
Flexible wire design adjusts to hold a variety of food sizes and shapes. Dishwasher safe.

EXTERIOR DIMENSIONS AND GRILLING SYSTEM

Gas Grill	Dimensions (inches-ld open and tables out)	Total Cooking Area (square inches)	Cooking Grates	Main Burners (BTU-per-hour input)
Weber® Q® 100	23.5 H x 27 W x 20.5 D	189	porcelain-enameled, cast-iron	8,500
Weber® Q® 120	24.6 H x 40.9 W x 20.5 D	189	porcelain-enameled, cast-iron	8,500

For further information about these grills, see the specification table in the back of this brochure.

Accessories sold separately.

WEBER® Q® 100 GAS GRILL

titanium item: 386002



- A Porcelain-Enameled, Cast-Iron Cooking Grate**
Heat is conducted evenly across the entire surface of the porcelain-enameled, cast-iron cooking grate.
- B Push Button Ignition**
The push of a single button starts the grill quickly and easily.
- C Removable Catch Pan**
A removable catch pan makes clean-up easy.
- D Convenient Fuel Source**
Runs on disposable 14.1 or 16.4 oz. LP cylinders (not included). An optional LP tank adapter hose for 20-lb. tanks is available as an accessory.

UPGRADE WEBER® Q® 120 GAS GRILL

titanium item: 516501



Includes all the features of the Weber® Q® 100 gas grill plus:

- E Built-In Thermometer**
A built-in thermometer monitors temperature inside the grill.
- F Electronic Ignition**
With electronic ignition, lighting your grill is quick, easy, and dependable.
- G Fold-Out Tables**
Two handy fold-out tables.

2013 WEBER® Q® GRILLS 9



A



C



E



F

WWW.WEBER.COM®



WEBER® Q® 200 SERIES

Tucked inside this compact grill is everything you need to fire up some big tastes.



6515 | Weber® Q® Two-Piece Stainless Steel Tool Set
Stainless steel construction, perfect portable size. Everything for on-the-go grilling. Includes spatula and tongs.



6505 | Weber® Q® Griddle
Porcelain-enameled, cast-iron griddle expands cooking possibilities. Fits Weber® Q® 200 series gas grills.

EXTERIOR DIMENSIONS AND GRILLING SYSTEM

Gas Grill	Dimensions (inches-lid open and tables out)	Total Cooking Area (square inches)	Cooking Grates	Main Burners (BTU-per-hour input)
Weber® Q® 200	26 H x 51.4 W x 24.3 D	280	porcelain-enameled, cast-iron	12,000
Weber® Q® 220	26 H x 51.4 W x 25.1 D	280	porcelain-enameled, cast-iron	12,000

For further information about these grills, see the specification table in the back of this brochure.

Accessories sold separately.

WEBER® Q® 200 GAS GRILL

titanium item: 396002



- A Porcelain-Enameled, Cast-Iron Cooking Grate**
Heat is conducted evenly across the entire surface of the porcelain-enameled, cast-iron cooking grate.
- B Push Button Ignition**
The push of a single button starts the grill quickly and easily.
- C Removable Catch Pan**
A removable catch pan makes clean-up easy.
- D Convenient Fuel Source**
Runs on disposable 14.1 or 16.4 oz. LP cylinders (not included). An optional LP tank adapter hose for 20-lb. tanks is available as an accessory.

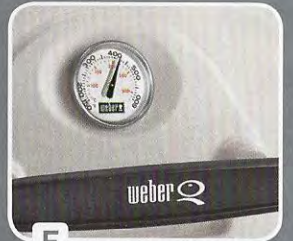
2013 WEBER® Q® GRILLS 11



A



D



E



F

UPGRADE

WEBER® Q® 220 GAS GRILL

titanium item: 566002



Includes all the features of the Weber® Q® 200 gas grill plus:

- E Built-In Thermometer**
A built-in thermometer monitors temperature inside the grill.
- F Electronic Ignition**
With electronic ignition, lighting your grill is quick, easy, and dependable.



WEBER® Q® 300 SERIES

Weber® Q® 300 series gas grills are a couple of real eye-catchers.



6553 | Weber® Q® Premium Cover

Keep your grill protected with this full-length cover. Fits Weber® Q® 300 series gas grills.



6506 | Weber® Q® Griddle

Make pancakes, eggs, and even bacon right on your Weber® Q® 300 gas grill. Made of porcelain-enameled cast-iron.

EXTERIOR DIMENSIONS AND GRILLING SYSTEM

Gas Grill	Dimensions (inches-lid open and tables out)	Total Cooking Area (square inches)	Cooking Grates	Main Burners (BTU-per-hour input)
Weber® Q® 300	55.5 H x 50.2 W x 30 D	393	porcelain-enameled, cast-iron	21,700
Weber® Q® 320	55.5 H x 50.2 W x 30 D	462 (primary + warming rack)	porcelain-enameled, cast-iron	21,700

For further information about these grills, see the specification table in the back of this brochure.

Accessories sold separately.

WEBER® Q® 300 GAS GRILL

titanium item: 426001



A Two Stainless Steel Burners

Two stainless steel burners deliver maximum heat. Turn off the inner burner for indirect cooking to open up a whole range of grilling possibilities.

B Built-In Thermometer

A built-in thermometer monitors temperature inside the grill.

C Fold-Down Tables

Two folding tables with tool hooks make storing the grill easy.

D Stationary Cart

The stationary cart with tank screen keeps the propane tank discreetly out of view. Includes a hose and regulator for connecting grill to a 20-lb. tank (tank not included).

2013 WEBER® Q® GRILLS 13



UPGRADE

WEBER® Q® 320 GAS GRILL

titanium item: 586002



Includes all the features of the Weber® Q® 300 gas grill plus:

E Electronic Ignition

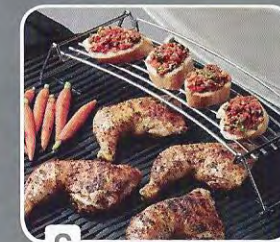
With electronic ignition, lighting your grill is quick, easy, and dependable.

F Grill Out® Handle Light

Three LED lights illuminate the surface of your grill.

G Warming Rack

Two large-capacity cooking grates allow you to cook up to 18 hamburgers or 36 jumbo hot dogs. The added warming rack creates even more cooking space.



WEBER® GAS GRILLS



- 25 YEARS**
Porcelain-enameled shroud
- 25 YEARS**
Stainless steel shroud
- 25 YEARS**
Aluminum castings
(2 years on paint excluding fading)
- 10 YEARS**
Stainless steel burner tubes
- 5 YEARS**
Stainless steel cooking grates and
stainless steel Flavorizer® bars
(no rust-through or burn-through)
- 5 YEARS**
Porcelain-enameled,
cast-iron cooking grates
(no rust-through or burn-through)
- 3 YEARS**
Porcelain-enameled,
steel cooking grates
(no rust-through or burn-through)
- 2 YEARS**
Porcelain-enameled Flavorizer® bars
(no rust-through or burn-through)
- 2 YEARS**
Infrared rotisserie burner
- 2 YEARS**
All remaining parts



SPIRIT® GAS GRILLS



E-210™



S-210™



E-220™



E-310™



E-320™

GENESIS® GAS GRILLS



E-310™



E-330™



S-310™



S-330™

SUMMIT® GAS GRILLS



E-420™



E-620™



E-470™



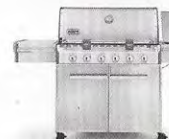
E-670™



BUILT-IN S-460™
(island not included)



S-420™



S-620™



S-470™



S-670™



BUILT-IN S-660™
(island not included)



SPIRIT® 200™ SERIES

New design. Same dependable performance.



7569 | Premium Cover
Prolong the life of your grill by keeping it covered. Fits Spirit® 200™ and 300™ series gas grills.



7597 | Porcelain-Enameled, Cast-Iron Griddle
This handy, two-sided griddle allows you to make pancakes, eggs, and bacon on the smooth side, and use the textured side for delicate fish and veggies. Fits Spirit® 200™ series gas grills.

EXTERIOR DIMENSIONS AND GRILLING SYSTEM

Gas Grill	Dimensions (inches-lid open)	Total Cooking Area primary + warming rack (square inches)	Cooking Grates	Flavorizer® Bars	Stainless Steel Burners	Main Burners (BTU-per-hour input)
Spirit® E-210™ and S-210™	63 H x 50 W x 32 D	450	porcelain-enameled, cast-iron	porcelain-enameled	two	26,500
Spirit® E-220™	63 H x 48 W x 32 D	450	porcelain-enameled, cast-iron	porcelain-enameled	two	26,500

For further information about these grills, see the specification table in the back of this brochure.

Accessories sold separately.

SPIRIT® E-210™ GAS GRILL

black LP item: 46110001



SPIRIT® S-210™ GAS GRILL

stainless steel
LP item: 46100001 | NG item: 47100001

A Porcelain-Enameled, Cast-Iron Cooking Grates
The ease of porcelain enamel with the superior heat retention of cast iron. Grates require no seasoning and are easy to clean.

B Fold-Down Tables
Two stainless steel tables with integrated tool hooks fold down to allow for easy storage.

C Fuel Gauge
Fuel gauge lets you know exactly where you stand on fuel at all times (LP only).

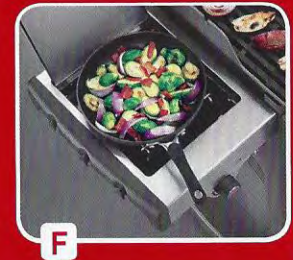
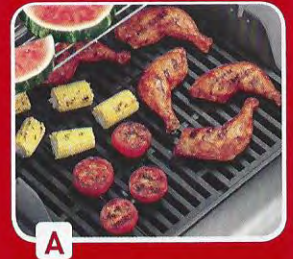
D Stainless Steel Shroud
The stainless steel shroud is durable and will withstand the elements for years to come.

E Porcelain-Enameled Shroud
No fading, peeling, or rusting with this durable, porcelain-enameled steel shroud. Easy to clean.

F Side Burner
Front-mounted control knob provides quick temperature adjustment and more room for larger sauté pans.

UPGRADE SPIRIT® E-220™ GAS GRILL

black LP item: 46310001



SPIRIT® E-300™ SERIES

All the essential features a griller could want in an affordable package.



6486 | Meatball/Slider Rack
Great for parties, this meatball/slider rack allows you to easily turn everything at once.



8838 | Poultry Roaster
Versatile two-in-one design allows you to make beer can chicken and grill veggies. For use with Gourmet BBQ System™.

EXTERIOR DIMENSIONS AND GRILLING SYSTEM

Gas Grill	Dimensions (inches-lid open)	Total Cooking Area primary + warming rack (square inches)	Cooking Grates	Flavorizer® Bars	Stainless Steel Burners	Main Burners (BTU-per-hour input)
Spirit® E-310™	63 H x 52 W x 32 D	529	porcelain-enameled, cast-iron	porcelain-enameled	three	32,000
Spirit® E-320™	63 H x 52 W x 32 D	529	porcelain-enameled, cast-iron	porcelain-enameled	three	32,000

For further information about these grills, see the specification table in the back of this brochure.

Accessories sold separately.

SPIRIT® E-310™ GAS GRILL

black LP item: 46510001 | NG item: 47510001



- A Porcelain-Enameled Shroud**
No fading, peeling, or rusting with this durable, porcelain-enameled steel shroud. Easy-to-clean interior and exterior.
- B Porcelain-Enameled, Cast-Iron Cooking Grates**
The ease of porcelain enamel with the superior heat retention of cast iron. Grates require no seasoning and are easy to clean.
- C Porcelain-Enameled Flavorizer® Bars**
Our unique, angled Flavorizer® bars smoke and sizzle when cooking juices drip down, adding flavor to your meal.
- D Fuel Gauge**
Fuel gauge lets you know exactly where you stand on fuel at all times (LP only).

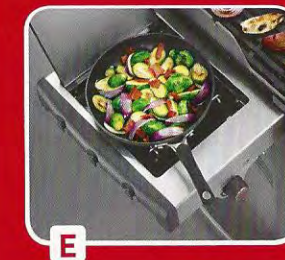
UPGRADE SPIRIT® E-320™ GAS GRILL

black LP item: 46710001



Includes all the features of the Spirit® E-310™ gas grill plus:

- E Side Burner**
Front-mounted control knob provides quick temperature adjustment and more room for larger sauté pans.



GENESIS® E-300™ SERIES

The Genesis® gas grills carry on the tradition of being the first of their kind.



7553 | Premium Cover

Our premium gas grill cover fits snugly with fitted center and long sides. Fits Genesis® 300™ series gas grills.



7566 | Porcelain-Enameled, Cast-Iron Griddle

This handy, two-sided griddle allows you to make pancakes, eggs, and bacon on the smooth side, and use the textured side for delicate fish and veggies. Fits Genesis® 300™ series gas grills.

EXTERIOR DIMENSIONS AND GRILLING SYSTEM

Gas Grill	Dimensions (inches-lid open)	Total Cooking Area primary + warming rack (square inches)	Cooking Grates	Flavorizer® Bars	Stainless Steel Burners	Main Burners (BTU-per-hour input)
Genesis® E-310™	64.5 H x 60 W x 30 D	637	porcelain-enameled, cast-iron	porcelain-enameled	three	38,000
Genesis® E-330™	64.5 H x 60 W x 30 D	637	porcelain-enameled, cast-iron	porcelain-enameled	three	38,000

For further information about these grills, see the specification table in the back of this brochure.

Accessories sold separately.

GENESIS® E-310™ GAS GRILL

black LP item: 6511001 | black NG item: 6611001
copper LP item: 6512001 | green LP item: 6517001



A Porcelain-Enameled Shroud

The porcelain-enameled shroud with matching painted steel doors is available in three stunning colors: black, copper, and green.

B Porcelain-Enameled, Cast-Iron Cooking Grates

The ease of porcelain enamel with the superior heat retention of cast iron. Grates require no seasoning and are easy to clean.

C Porcelain-Enameled Flavorizer® Bars

Our unique, angled Flavorizer® bars smoke and sizzle when cooking juices drip down, adding flavor to your meal.

D Fuel Gauge

Fuel gauge lets you know exactly where you stand on fuel at all times (LP only).



B



D

UPGRADE GENESIS® E-330™ GAS GRILL

black LP item: 6531001 | black NG item: 6631001
copper LP item: 6532001 | green LP item: 6537001



Includes all the features of the Genesis® E-310™ gas grill plus:

E Sear Station® Burner

Maximize the heat without minimizing grilling space. This high-powered sear burner is designed to step up the heat on demand for searing.

F Side Burner

The 12,000 BTU-per-hour input, flush-mounted side burner lets you multitask while grilling.



E



F

Available LP colors:



black copper green

Available NG color: black



GENESIS® S-300™ SERIES

Top-notch engineering will quickly launch you into a world of grill-happy euphoria



6650 | Stainless Steel Sausage Tongs

Easily flip multiple brats, sausages, hot dogs, or asparagus spears. Handles lock for compact storage.



7590 | Genesis® Island Cabinetry
Extend the workspace, storage and grilling possibilities with stainless steel storage cabinets. Fits Genesis® 300™ series gas grills with front-mounted control panel.

EXTERIOR DIMENSIONS AND GRILLING SYSTEM

Gas Grill	Dimensions (inches-lid open)	Total Cooking Area primary + warming rack (square inches)	Cooking Grates	Flavorizer® Bars	Stainless Steel Burners	Main Burners (BTU-per-hour input)
Genesis® S-310™	64.5 H x 60 W x 30 D	637	7 mm diameter stainless steel rod	stainless steel	three	38,000
Genesis® S-330™	64.5 H x 60 W x 30 D	637	7 mm diameter stainless steel rod	stainless steel	three	38,000

For further information about these grills, see the specification table in the back of this brochure.

Accessories sold separately.

GENESIS® S-310™ GAS GRILL

stainless steel LP item: 6550001 | NG item: 6650001



A Stainless Steel Shroud

The stainless steel shroud is durable and will withstand the elements for years to come. Accented with a polished stainless steel handle.

B Stainless Steel Cooking Grates

7 mm diameter stainless steel rod cooking grates provide even heat and easy clean-up.

C Stainless Steel Flavorizer® Bars

Our unique, angled Flavorizer® bars smoke and sizzle when cooking juices drip down, adding flavor to your meal.

D Fuel Gauge

Fuel gauge lets you know exactly where you stand on fuel at all times (LP only).



B



C



E



F

UPGRADE GENESIS® S-330™ GAS GRILL

stainless steel LP item: 6570001 | NG item: 6670001



Includes all the features of the Genesis® S-310™ gas grill plus:

E Sear Station® Burner

Maximize the heat without minimizing grilling space. This high-powered sear burner is designed to step up the heat on demand for searing.

F Side Burner

The 12,000 BTU-per-hour input, flush-mounted side burner lets you multitask while grilling.



GENESIS® ISLAND CABINETRY

Expand the workspace, storage, and grilling possibilities of your gas grill.



7549 | Premium Cover
Heavy-duty cover protects your grill work surfaces from the elements. Velcro straps secure cover to the grill. Fits Weber® Genesis® grill with island cabinetry.



6625 | Stainless Steel Two-Piece Barbecue Tool Set
Soft-touch handles offer comfortable, non-slip grip. Set includes spatula and tongs.

EXTERIOR DIMENSIONS

Accessory	Dimensions-Each Cabinet (inches)	Assembled Dimensions-Gas Grill and Cabinetry (inches)
Genesis® Island Cabinetry	33.8 H x 14.9 W x 21 D	64.5 H x 89.7 W x 30 D

For further information about these grills, see the specification table in the back of this brochure.

Accessories sold separately.

GENESIS® ISLAND CABINETRY

GAS GRILL NOT INCLUDED
stainless steel item: 7590 | black item: 7591



A Stainless Steel Side Tables

Expand your preparation and serving space with two stainless steel side tables.

B Adjustable Wire Shelves

Each cabinet contains two adjustable wire shelves, allowing you to put your favorite items—from the roast holder to the pizza stone—right at the grill so they are always within reach.

C Compatibility with Side Burner

Quick-connect fuel line extension makes reconnecting your side burner a snap.

D Painted Steel Doors

Sleek painted steel doors blend seamlessly with grill cabinet doors.

E Stainless Steel Doors

Sleek stainless steel doors blend seamlessly with grill cabinet doors.



SUMMIT® E-400™ SERIES

Enjoy the view. Summit® gas grills add plenty more style to your backyard.



7554 | Premium Cover
Our premium gas grill cover fits snugly with fitted center and long sides. Fits Summit® 400™ series gas grills.



7404 | Porcelain-Enameled, Cast-Iron Griddle
This handy, two-sided griddle allows you to make pancakes, eggs, and bacon on the smooth side, and use the textured side for veggies. Fits Summit® 400™ and 600™ series gas grills.

EXTERIOR DIMENSIONS AND GRILLING SYSTEM

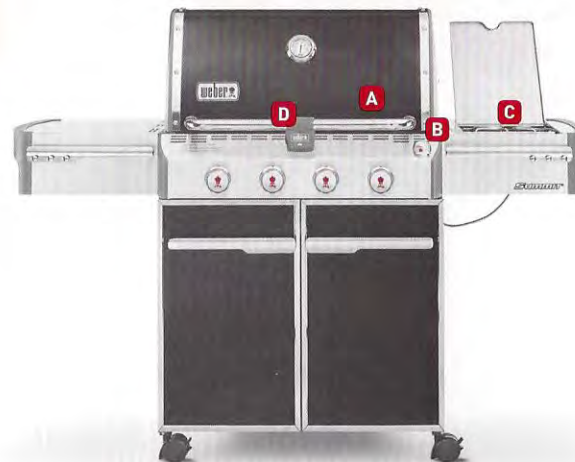
Gas Grill	Dimensions (inches-lid open)	Total Cooking Area primary + warming rack (square inches)	Cooking Grates	Flavorizer® Bars	Stainless Steel Burners	Main Burners (BTU-per-hour input)
Summit® E-420™	57.1 H x 66 W x 30 D	650	9 mm diameter stainless steel rod	stainless steel	four	48,800
Summit® E-470™	57.1 H x 66 W x 30 D	580	9 mm diameter stainless steel rod	stainless steel	four	48,800

For further information about these grills, see the specification table in the back of this brochure.

Accessories sold separately.

SUMMIT® E-420™ GAS GRILL

black LP item: 7121001 | NG item: 7221001



- A 9 mm Diameter Stainless Steel Rod Cooking Grates**
9 mm diameter stainless steel rod cooking grates provide even heat and easy clean-up.
- B Integrated LED Tank Scale**
An integrated LED tank scale on the control panel shows the fuel level at the push of a button. (LP models only)
- C Side Burner**
The 12,000 BTU-per-hour input, flush-mounted side burner lets you multitask while grilling.
- D Grill Out® Handle Light**
Shed a little light on the subject with this handy LED light—an integrated tilt sensor automatically turns the light on when you lift the lid.



B



C

UPGRADE SUMMIT® E-470™ GAS GRILL

black LP item: 7171001 | NG item: 7271001



Includes all the features of the Summit® E-420™ gas grill plus:

- E Smoker Burner**
Add smoky flavor to any grilled meal with the integrated smoker burner and stainless steel smoker box.
- F Sear Station® Burner**
Maximize the heat without minimizing grilling space. This high-powered sear burner is designed to step up the heat when needed for searing.
- G Tuck-Away™ Rotisserie System**
This unique rotisserie system comes with a flip-up motor for easy rotissing, and a separate spit and fork storage area in the enclosed cart.
- H Lighted Control Knobs**
Illuminated by powerful LED lights, the lighted control knobs allow you to precisely control your grill's temperature even in low light conditions.



E



G



SUMMIT® E-600™ SERIES

We've packed all top features into these dramatic looking, six-burner gas grills.



7555 | Premium Cover

Our premium gas grill cover fits snugly with fitted center and long sides. Fits Summit® 600™ series gas grills.



6430 | Weber Style™ Pizza Stone

Cordierite ceramic pizza stone is perfect for grilling thin crust pizzas. Stainless steel frame doubles as a carrier for taking the pizza from grill to table.

EXTERIOR DIMENSIONS AND GRILLING SYSTEM

Gas Grill	Dimensions (inches-lid open)	Total Cooking Area primary + warming rack (square inches)	Cooking Grates	Flavorizer® Bars	Stainless Steel Burners	Main Burners (BTU-per-hour input)
Summit® E-620™	57.1 H x 74.1 W x 30 D	838	9 mm diameter stainless steel rod	stainless steel	six	60,000
Summit® E-670™	57.1 H x 74.1 W x 30 D	769	9 mm diameter stainless steel rod	stainless steel	six	60,000

For further information about these grills, see the specification table in the back of this brochure.

Accessories sold separately.

SUMMIT® E-620™ GAS GRILL

black LP item: 7321001 | NG item: 7421001



A 9 mm Diameter Stainless Steel Rod Cooking Grates

9 mm diameter stainless steel rod cooking grates provide even heat and easy clean-up.

B Integrated LED Tank Scale

An integrated LED tank scale on the control panel shows the fuel level at the push of a button. (LP models only)

C Side Burner

The 12,000 BTU-per-hour input, flush-mounted side burner lets you multitask while grilling.

D Two Grill Out® Handle Lights

Shed a little light on the subject with the handy LED lights—an integrated tilt sensor automatically turns the lights on when you lift the lid.



UPGRADE

SUMMIT® E-670™ GAS GRILL

black LP item: 7371001 | NG item: 7471001



Includes all the features of the Summit® E-620™ gas grill plus:

E Smoker Burner

Add smoky flavor to any grilled meal with the integrated smoker burner and stainless steel smoker box.

F Sear Station® Burner

Maximize the heat without minimizing grilling space. This high-powered sear burner is designed to step up the heat when needed for searing.

G Tuck-Away™ Rotisserie System

This unique rotisserie system comes with a flip-up motor for easy rotissing, and a separate spit and fork storage area in the enclosed cart.

H Lighted Control Knobs

Illuminated by powerful LED lights, the lighted control knobs allow you to precisely control your grill's temperature even in low light conditions.



SUMMIT® S-400™ SERIES

Show-stopping looks and performance, all in one package.



6434 | Weber Style™ Stainless Steel Vegetable Basket

Add chopped veggies to the pan and place it on the grill alongside the main entrée, or use it as a wok pan for diced chicken, pork, or beef.



6655 | Stainless Steel Pincer Tong

Optimized dexterity when cooking small, delicate items such as shrimp, scallops, or small fruits and vegetables. Handles lock for compact storage.

EXTERIOR DIMENSIONS AND GRILLING SYSTEM

Gas Grill	Dimensions (inches-lid open)	Total Cooking Area primary + warming rack (square inches)	Cooking Grates	Flavorizer® Bars	Stainless Steel Burners	Main Burners (BTU-per-hour input)
Summit® S-420™	57.1 H x 66 W x 30 D	650	9 mm diameter stainless steel rod	stainless steel	four	48,800
Summit® S-470™	57.1 H x 66 W x 30 D	580	9 mm diameter stainless steel rod	stainless steel	four	48,800

For further information about these grills, see the specification table in the back of this brochure.

Accessories sold separately.

SUMMIT® S-420™ GAS GRILL

stainless steel LP item: 7120001 | NG item: 7220001



A 9 mm Diameter Stainless Steel Rod Cooking Grates
9 mm diameter stainless steel rod cooking grates provide even heat and easy clean-up.

B Integrated LED Tank Scale
An integrated LED tank scale on the control panel shows the fuel level at the push of a button. (LP models only)

C Side Burner
The 12,000 BTU-per-hour input, flush-mounted side burner lets you multitask while grilling.

D Grill Out® Handle Light
Shed a little light on the subject with this handy LED light—an integrated tilt sensor automatically turns the light on when you lift the lid.



UPGRADE SUMMIT® S-470™ GAS GRILL

stainless steel LP item: 7170001 | NG item: 7270001



Includes all the features of the Summit® E-420™ gas grill plus:

E Smoker Burner
Add smoky flavor to any grilled meal with the integrated smoker burner and stainless steel smoker box.

F Sear Station® Burner
Maximize the heat without minimizing grilling space. This high-powered sear burner is designed to step up the heat when needed for searing.

G Tuck-Away™ Rotisserie System
This unique rotisserie system comes with a flip-up motor for easy rotissing, and a separate spit and fork storage area in the enclosed cart.

H Lighted Control Knobs
Illuminated by powerful LED lights, the lighted control knobs allow you to precisely control your grill's temperature even in low light conditions.



SUMMIT® S-600™ SERIES

Setting a whole new standard for backyard grilling.



17302 | Firespice™ Cedar Planks
Crafted from sustainably harvested cedar. Planks are perfect for large fillets. Planks come 2 per pack.



6436 | Weber Style™ Stainless Steel Roast Holder
This roast holder is perfect for poultry and other large cuts of meat.

EXTERIOR DIMENSIONS AND GRILLING SYSTEM

Gas Grill	Dimensions (inches - lid open)	Total Cooking Area primary + warming rack (square inches)	Cooking Grates	Flavorizer® Bars	Stainless Steel Burners	Main Burners (BTU-per-hour input)
Summit® S-620™	57.1 H x 74.1 W x 30 D	838	9 mm diameter stainless steel rod	stainless steel	six	60,000
Summit® S-670™	57.1 H x 74.1 W x 30 D	769	9 mm diameter stainless steel rod	stainless steel	six	60,000

For further information about these grills, see the specification table in the back of this brochure.

Accessories sold separately.

SUMMIT® S-620™ GAS GRILL

stainless steel LP item: 7320001 | NG item: 7420001



- A 9 mm Diameter Stainless Steel Rod Cooking Grates**
9 mm diameter stainless steel rod cooking grates provide even heat and easy clean-up.
- B Integrated LED Tank Scale**
An integrated LED tank scale on the control panel shows the fuel level at the push of a button. (LP models only)
- C Side Burner**
The 12,000 BTU-per-hour input, flush-mounted side burner lets you multitask while grilling.
- D Two Grill Out® Handle Lights**
Shed a little light on the subject with the handy LED lights—an integrated tilt sensor automatically turns the lights on when you lift the lid.

UPGRADE SUMMIT® S-670™ GAS GRILL

stainless steel LP item: 7370001 | NG item: 7470001



Includes all the features of the Summit® S-620™ gas grill plus:

- E Smoker Burner**
Add smoky flavor to any grilled meal with the integrated smoker burner and stainless steel smoker box.
- F Sear Station® Burner**
Maximize the heat without minimizing grilling space. This high-powered sear burner is designed to step up the heat when needed for searing.
- G Tuck-Away™ Rotisserie System**
This unique rotisserie system comes with a flip-up motor for easy rotissing, and a separate spit and fork storage area in the enclosed cart.
- H Lighted Control Knobs**
Illuminated by powerful LED lights, the lighted control knobs allow you to precisely control your grill's temperature even in low light conditions.



A



D



F



H



SUMMIT® BUILT-IN SERIES

So many incredible features, you'll be hard pressed to find anything you can't cook up.



83003 LP | 83004 NG Dual Side Burner

Two 12,000 BTU-per-hour input burners. Electronic ignition. Flush-mounted stainless steel cover included.



6610 | Stainless Steel Locking Tongs

Unique front end design provides secure grip plus the handle locks for compact storage.

EXTERIOR DIMENSIONS AND GRILLING SYSTEM

Gas Grill	Dimensions (inches-lid open)	Total Cooking Area primary + warming rack (square inches)	Cooking Grates	Flavorizer® Bars	Stainless Steel Burners	Main Burners (BTU-per-hour input)
Summit® S-460™ Built-In	49.5 H x 34 W x 31 D	580	9 mm diameter stainless steel rod	stainless steel	four	48,800
Summit® S-660™ Built-In	49.5 H x 42 W x 31 D	769	9 mm diameter stainless steel rod	stainless steel	six	60,000

For further information about these grills, see the specification table in the back of this brochure.

Accessories sold separately.

SUMMIT® S-460™ BUILT-IN GAS GRILL

stainless steel LP item: 7160001 | NG item: 7260001



ISLAND NOT INCLUDED

UPGRADE

SUMMIT® S-660™ BUILT-IN GAS GRILL

stainless steel LP item: 7360001 | NG item: 7460001



ISLAND NOT INCLUDED

A Smoker Burner

Add smoky flavor to any grilled meal with the integrated smoker burner and stainless steel smoker box.

B Sear Station® Burner

Maximize the heat without minimizing grilling space. This high-powered sear burner is designed to step up the heat when needed for searing.

C Infrared Rotisserie Burner

Heavy-duty, rear-mounted, infrared rotisserie burner evenly distributes heat directly towards the spit.

D Lighted Control Knobs

Illuminated by powerful LED lights, the lighted control knobs allow you to precisely control your grill's temperature even in low light conditions.

E SlideFrame™ Design

The grill slides in and out for service and maintenance. Two swivel casters and two locking casters provide easy installation and serviceability; a stainless steel panel discreetly hides casters until they are needed.

Includes all the features of the Summit® S-460™ built-in plus:

F Six Stainless Steel Burners

60,000 BTU-per-hour input main burners.

G Larger Cooking Area

With 769 square inches of total cooking area, there's plenty of room.

H Two Grill Out® Handle Lights

Shed a little light on the subject with the handy LED lights—an integrated tilt sensor automatically turns the lights on when you lift the lid.



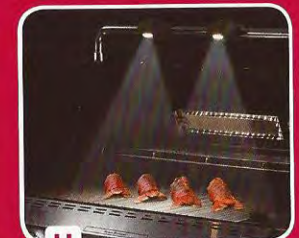
A



B



C



H

WEBER® CHARCOAL GRILLS



- 10 YEARS**
Nylon handles
- 10 YEARS**
Stainless steel One-Touch™
cleaning system
- 10 YEARS**
Thermoplastic/thermoset parts
(excluding fading)
- 10 YEARS**
Bowl and lid
(against rust-through/burn-through)
- 5 YEARS**
Aluminized blades/plated parts
One-Touch™ cleaning system
- 2 YEARS**
Cooking/charcoal grates
- 2 YEARS**
All remaining parts

PORTABLE GRILLS



SMOKEY JOE® SILVER



SMOKEY JOE® GOLD



JUMBO JOE®



GO-ANYWHERE® CHARCOAL



GO-ANYWHERE® GAS

ONE-TOUCH®



18.5 INCH ONE-TOUCH® SILVER



22.5 INCH ONE-TOUCH® SILVER



22.5 INCH ONE-TOUCH® GOLD



26.75 INCH ONE-TOUCH® GOLD

PERFORMER®



PERFORMER® SILVER



PERFORMER® GOLD



PERFORMER® PLATINUM

SPECIALTY



18.5 INCH SMOKEY MOUNTAIN COOKER™
SMOKER



22.5 INCH SMOKEY MOUNTAIN COOKER™
SMOKER



RANCH® KETTLE



SMOKEY JOE® CHARCOAL GRILL

Big fun comes in small sizes.



7447 | Compact Rapidfire® Chimney Starter

Smaller version of original Rapidfire® chimney starter. Fits perfectly on Smokey Joe® and Jumbo Joe® charcoal grills.



6555 | Smokey Joe® Carry Bag

Durable storage bag comes with a padded, adjustable shoulder strap. Barbecue tool storage pouch included (fits most 14 inch tongs and spatulas). Fits Smokey Joe® Silver and Smokey Joe® Gold charcoal grills.

EXTERIOR DIMENSIONS AND GRILLING SYSTEM

Charcoal Grill	Dimensions (inches)	Total Cooking Area (square inches)	Cooking Grate	Available Color
Smokey Joe® Silver	17 H x 14.25 W x 14.5 D	147	plated steel	black
Smokey Joe® Gold	17 H x 14.25 W x 16.5 D	147	plated steel	black

For further information about these grills, see the specification table in the back of this brochure.

Accessories sold separately.

SMOKEY JOE® SILVER CHARCOAL GRILL

black item: 10020



UPGRADE SMOKEY JOE® GOLD CHARCOAL GRILL

black item: 40020



- A Aluminum Damper**
Rust-resistant aluminum damper provides proper airflow for perfect grilling.
- B Porcelain-Enameled Bowl and Lid**
Porcelain enamel won't rust or peel, giving your grill years of top performance and shining good looks.
- C Cooking Grate**
Plated steel cooking grate provides ample cooking area for all your culinary adventures.

Includes all the features of the Smokey Joe® Silver plus:

- D Tuck-N-Carry® Lid Holder**
The Tuck-N-Carry® lid lock allows for carrying, and also lowers to double as a lid holder.

2013 PORTABLE GRILLS 39



A



B



C



D

WWW.WEBER.COM®



JUMBO JOE® CHARCOAL GRILL

On-the-go grilling just got bigger.



7445 | Portable Charcoal Table
Perfect for tailgaters and campers—goes up in minutes and stores flat! Legs lock in place to keep your grill from moving while in use. Designed to fit Weber® portable grills.



6677 | Grill Basket
Ideal for smaller veggies and pieces of meat. Unique patented Weber design allows the smoke to come up yet keeps the food from falling through.

EXTERIOR DIMENSIONS AND GRILLING SYSTEM

Charcoal Grill	Dimensions (inches)	Total Cooking Area (square inches)	Cooking Grate	Available Color
Jumbo Joe®	19.75 H x 20.5 W x 19.75 D	240	plated steel	black

For further information about these grills, see the specification table in the back of this brochure.

Accessories sold separately.

JUMBO JOE® CHARCOAL GRILL

black item: 1211001



A Aluminum Damper
Rust-resistant aluminum damper provides proper airflow for perfect grilling.

B Porcelain-Enamelled Bowl and Lid
Porcelain enamel won't rust or peel, giving your grill years of top performance and shining good looks.

C Cooking Grate
Plated steel cooking grate provides ample cooking area for all your culinary adventures.

D Tuck-N-Carry® Lid Holder
The Tuck-N-Carry® lid lock allows for carrying, and also lowers to double as a lid holder.

E Rust-Resistant Aluminum Ash Catcher
The rust-resistant aluminum ash catcher lifts out for easy ash disposal and cleaning.



GO-ANYWHERE® GRILLS

Grab it and grill it.



6470 | Small Stainless Steel Fish Basket

Flexible wire design adjusts to hold a variety of food sizes and shapes. Dishwasher safe.



6494 | Three-Sided Grill Brush**

For those hard-to-reach areas of your cooking grate, this specially angled stainless steel grill brush makes cleaning easy.

**Replace brush if any loose bristles are found on cooking grates or brush.

EXTERIOR DIMENSIONS AND GRILLING SYSTEM

Portable Grill	Dimensions (inches)	Total Cooking Area (square inches)	Main Burner (BTU-per-hour input)	Cooking Grate	Available Colors
Go-Anywhere® Charcoal	14.5 H x 21 W x 12.25 D	160	-	plated steel	black
Go-Anywhere® Gas	14.5 H x 21"W x 12.25 D	160	10,000	plated steel	black

For further information about these grills, see the specification table in the back of this brochure.

Accessories sold separately.

GO-ANYWHERE® CHARCOAL GRILL

black item: 121020



A Aluminum Dampers

Rust-resistant aluminum dampers provide proper airflow for perfect grilling.

B Plated Steel Cooking Grate

The plated steel cooking grate provides ample cooking area for all your culinary adventures.

C Porcelain-Enamelled Lid and Base

Porcelain enamel won't rust or peel, giving your grill years of top performance and shining good looks.

D Lid Lock

Plated steel legs pivot to lock lid in place for carrying.



B



D

GO-ANYWHERE® GAS GRILL

black item: 1520



E Heat Distribution Plate

Distributes heat evenly across the cooking surface, virtually eliminating flare-ups.

F Stainless Steel Burner

Small and mighty doesn't even begin to describe this durable, stainless steel burner. It's centrally positioned to provide targeted direct heat across the entire cookbox.

G Convenient Fuel Source

Runs on disposable 14.1 or 16.4 oz. LP cylinders (tank not included).



E



F



ONE-TOUCH® SILVER

Our legendary charcoal grills have become a backyard icon.



Premium Cover
18.5 inch: 7452 | 22.5 inch: 7453
 Heavy-duty cover protects Weber® charcoal grill from the elements. Fits One-Touch® Gold and Silver charcoal grills.



7416 | Rapidfire® Chimney Starter
 Delivers hot coals in under 20 minutes without using lighter fluid. Place canister with coals on top of Weber® lighter cubes or crumpled newspaper and light. It's that easy!

EXTERIOR DIMENSIONS AND GRILLING SYSTEM

Charcoal Grill	Dimensions (inches)	Total Cooking Area (square inches)	Cooking Grate	Available Colors
18.5 inch One-Touch® Silver	35 H x 23 W x 18.5 D	240	plated steel	black
22.5 inch One-Touch® Silver	38.5 H x 25 W x 22.5 D	363	plated steel	black

For further information about these grills, see the specification table in the back of this brochure.

Accessories sold separately.

ONE-TOUCH® SILVER CHARCOAL GRILL

black 18.5 inch item: 441001
 black 22.5 inch item: 741001



22.5 inch black



18.5 inch black

- A Aluminum Damper**
Rust-resistant damper provides proper airflow for perfect grilling and allows for complete heat control.
- B Porcelain-Enamelled Bowl and Lid**
Porcelain enamel won't rust or peel, giving your grill years of top performance and shining good looks.
- C Cooking Grate**
Plated steel cooking grate provides ample cooking area for all your culinary adventures.

- D Lid Hook**
Inside the grill lid is an angled lid hook. Simply slide the lid to the side.
- E One-Touch™ Cleaning System**
The aluminized steel One-Touch™ cleaning system makes clean-up hassle free.
- F Rust-Resistant Aluminum Ash Catcher**
The rust-resistant aluminum ash catcher lifts out for easy ash disposal and cleaning.



A



C



D



E



ONE-TOUCH® GOLD

Get ready to inspire neighborhood-wide envy.



7413 | Work Table

A heavy-duty side table with three tool hooks and adjustable leg height. Mounts easily onto your 18.5 inch and 22.5 inch Weber® charcoal grills.



7420 | Sear Grate Set

Porcelain-enameled cast-iron sear grate retains heat and seals in moisture and flavor. Hinged cooking grate with 12 inch wire insert allows for standard grilling. (Set fits 22.5 inch charcoal grills only)

EXTERIOR DIMENSIONS AND GRILLING SYSTEM

Charcoal Grill	Dimensions (inches)	Total Cooking Area (square inches)	Cooking Grate	Available Colors
22.5 inch One-Touch® Gold	38.5 H x 27 W x 22.5 D	363	hinged, plated steel	black, dark blue, and green

For further information about these grills, see the specification table in the back of this brochure.

Accessories sold separately.

ONE-TOUCH® GOLD CHARCOAL GRILL

black item: 1351001
dark blue item: 1358001
green item: 1357001



22.5 inch dark blue



22.5 inch black



22.5 inch green

A Aluminum Damper

Rust-resistant damper provides proper airflow for perfect grilling and allows for complete heat control.

B Porcelain-Enameled Bowl and Lid

Porcelain enamel won't rust or peel, giving your grill years of top performance and shining good looks.

C Hinged Cooking Grate

This intuitively designed feature lets you easily add/adjust charcoal without lifting the grate or moving your food. That means extended cooking and slow-smoking can continue uninterrupted.

D Built-In Thermometer

A durable, built-in lid thermometer allows you to monitor your grill's temperature.

E Tool Hook Handle

New bowl handle design includes integrated tool hooks for easy and convenient access.

F Lid Hook

Inside the grill lid is an angled lid hook. Simply slide the lid to the side.

G One-Touch™ Cleaning System

The aluminized steel One-Touch™ cleaning system makes clean-up hassle free.

H High-Capacity Ash Catcher

The enclosed ash catcher keeps ashes from blowing around and is easily detached for quick and clean ash removal.



C



D



E



H



26.75 INCH ONE-TOUCH® GOLD

A culinary icon for the ages.



7574 | Premium Cover
Heavy-duty cover protects Weber® charcoal grill from the elements. Fits 26.75 inch One-Touch® Gold charcoal grills.



6469 | Rib and Roast Holder
2-in-1 design expands cooking flexibility in one space-saving accessory. Made of plated steel. Dishwasher safe. Fits Weber® Q® 300 and larger gas grills, and 22.5 inch and larger charcoal grills.

EXTERIOR DIMENSIONS AND GRILLING SYSTEM

Charcoal Grill	Dimensions (inches)	Total Cooking Area (square inches)	Cooking Grate	Available Color
26.75 inch One-Touch® Gold	42.3 H x 32 W x 24.4 D	508	hinged, stainless steel	black

For further information about these grills, see the specification table in the back of this brochure.

Accessories sold separately.

ONE-TOUCH® GOLD CHARCOAL GRILL

26.75 inch black item: 781001



- A Aluminum Damper**
Rust-resistant damper provides proper airflow for perfect grilling and allows for complete heat control.
- B Porcelain-Enamelled Bowl and Lid**
Porcelain enamel won't rust or peel, giving your grill years of top performance and shining good looks.
- C Hinged Cooking Grate**
This intuitively designed feature lets you easily add/adjust charcoal without lifting the grate or moving your food. That means extended cooking and slow smoking can continue uninterrupted.
- D Built-In Thermometer**
A durable, built-in lid thermometer allows you to monitor your grill's temperature.
- E Tool Hook Handle**
New bowl handle design includes integrated tool hooks for easy and convenient access.
- F Tuck-Away™ Lid Holder**
The Tuck-Away™ lid holder allows you to move your lid to the side to check your meal or add charcoal.
- G One-Touch™ Cleaning System**
The stainless steel One-Touch™ cleaning system makes clean-up hassle free.
- H High-Capacity Ash Catcher**
The enclosed ash catcher keeps ashes from blowing around and is easily detached for quick and clean ash removal.



PERFORMER® SILVER

A new take on the classic kettle.



7449 | Premium Cover
Heavy-duty cover protects your Weber® charcoal grill from the elements. Fits Performer® Silver charcoal grills.



8840 | Korean Barbecue
Get real Korean style barbecue right in your own backyard. Great for grilling up strips of marinated meat, pork, or chicken. For use with Gourmet BBQ System™ cooking grate.

EXTERIOR DIMENSIONS AND GRILLING SYSTEM

Charcoal Grill	Dimensions (inches-with table up)	Total Cooking Area (square inches)	Cooking Grate	Available Colors
Performer® Silver	42 H x 39 W x 28.5 D	363	hinged, plated steel	black

For further information about these grills, see the specification table in the back of this brochure.

Accessories sold separately.

PERFORMER® SILVER CHARCOAL GRILL

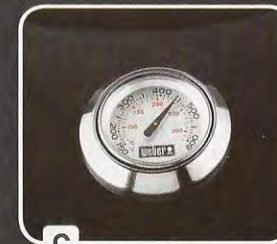
black item: 1401001



- A Porcelain-Enamelled Bowl and Lid**
Porcelain enamel won't rust or peel, giving your grill years of top performance and shining good looks.
- B Hinged Cooking Grate**
This intuitively designed feature lets you easily add/adjust charcoal without lifting the grate or moving your food. That means extended cooking and slow smoking can continue uninterrupted.
- C Built-In Thermometer**
A durable, built-in lid thermometer allows you to monitor your grill's temperature.
- D Fold-Down Table**
Painted, steel side table easily folds down for accommodating tight spaces and for storage.
- E Tuck-Away™ Lid Holder**
The Tuck-Away™ lid holder allows you to easily move your lid to the side to check your meal or add charcoal.
- F One-Touch™ Cleaning System**
The aluminized steel One-Touch™ cleaning system makes clean-up hassle free.
- G High-Capacity Ash Catcher**
The enclosed ash catcher keeps ashes from blowing around and is easily detached for quick and clean ash removal.



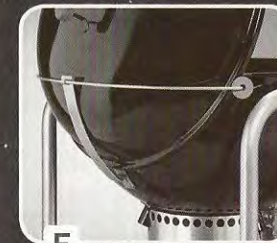
B



C



D



E



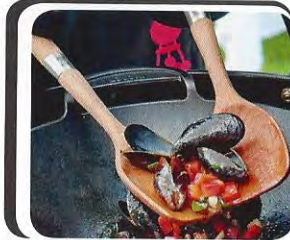
PERFORMER® GOLD

Smart in all the right places.



7422 | Gourmet BBQ System™ Wok

Porcelain-enameled cast iron retains heat and seals in moisture and flavor. Porcelain-enameled finish prevents sticking and allows for easy clean-up.



6468 | Wok Tool Set
Crafted from sustainably harvested beech wood. Contoured tools are designed to fit the curves of the Weber Original™ Gourmet BBQ System™ wok. Set includes spoon and spatula.

EXTERIOR DIMENSIONS AND GRILLING SYSTEM

Charcoal Grill	Dimensions (inches)	Total Cooking Area (square inches)	Cooking Grate	Available Colors
Performer® Gold	40 H x 50.25 W x 28.5 D	363	hinged, plated steel	black, dark blue, and green

For further information about these grills, see the specification table in the back of this brochure.

Accessories sold separately.

PERFORMER® GOLD CHARCOAL GRILL

black item: 1431001 | dark blue item: 1438001
green item: 1437001



dark blue

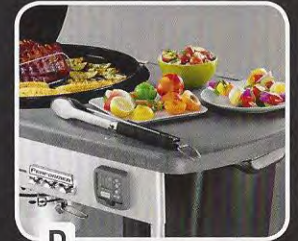


green

- A Removable Cook Timer**
LCD cook timer includes a large readout and can attach to the grill or be easily removed for convenience.
- B Porcelain-Enameled Bowl and Lid**
Porcelain enamel won't rust or peel, giving your grill years of top performance and shining good looks.
- C Built-In Thermometer**
A durable, built-in lid thermometer allows you to monitor your grill's temperature.
- D Thermoset Table**
Large, heat-resistant work surface designed with the griller in mind.
- E CharBin™ Storage Container**
Protect your charcoal from the elements and keep it where you use it with the handy CharBin™ storage container.
- F Tuck-Away™ Lid Holder**
The Tuck-Away™ lid holder allows you to easily move your lid to the side to check your meal or add charcoal.
- G One-Touch™ Cleaning System**
The aluminized steel One-Touch™ cleaning system makes clean-up hassle free.
- H High-Capacity Ash Catcher**
The enclosed ash catcher keeps ashes from blowing around and is easily detached for quick and clean ash removal.



A



D



E



F



PERFORMER® PLATINUM

The grill that practically lights itself.



7455 | Premium Cover
Heavy-duty cover protects Performer® Gold and Platinum charcoal grills from the elements.



8833 | Gourmet BBQ System™ Griddle Set
Porcelain-enameled cast iron griddle retains heat and seals in moisture and flavor. Hinged cooking grate with 12 inch wire insert allows for standard grilling. (Set fits 22.5 inch charcoal grills only)

EXTERIOR DIMENSIONS AND GRILLING SYSTEM

Charcoal Grill	Dimensions (inches)	Total Cooking Area (square inches)	Cooking Grate	Available Colors
Performer® Platinum	40 H x 50.25 W x 28.5 D	363	hinged, plated steel	black, dark blue, and green

For further information about these grills, see the specification table in the back of this brochure.

Accessories sold separately.

PERFORMER® PLATINUM CHARCOAL GRILL

black item: 1481001 | dark blue item: 1488001
green item: 1487001



black



dark blue

A Touch-N-Go™ Gas Ignition

The electronic gas ignition system ignites charcoal briquettes with the push of a button.

B Removable Cook Timer

LCD cook timer features a large readout and can attach to the grill or be easily removed for convenience.

C Built-In Thermometer

A durable, built-in lid thermometer allows you to monitor your grill's temperature.

D Char-Basket™ Charcoal Fuel Holders

Two Char-Basket™ fuel holders accommodate the right amount of charcoal for indirect cooking.

E CharBin™ Storage Container

Protect your charcoal from the elements and keep it where you use it with the handy CharBin™ storage container.

F Tuck-Away™ Lid Holder

The Tuck-Away™ lid holder allows you to easily move your lid to the side to check your meal or add charcoal.

G One-Touch™ Cleaning System

The aluminized steel One-Touch™ cleaning system makes clean-up hassle free.

H High-Capacity Ash Catcher

The enclosed ash catcher keeps ashes from blowing around and is easily detached for quick and clean ash removal.



RANCH® KETTLE

Giant possibilities await.



6482 | Poultry Roaster

Rack provides better stability and easier transport of beer can chicken. Made of plated steel. Dishwasher safe. Fits Weber® Q® 300 and larger gas grills, and 18.5 inch and larger charcoal grills.



7416 | Rapidfire® Chimney Starter

Delivers hot coals in under 20 minutes without using lighter fluid. Place canister with coals on top of Weber® lighter cubes or crumpled newspaper and light. It's that easy!

EXTERIOR DIMENSIONS AND GRILLING SYSTEM

Charcoal Grill	Dimensions (inches)	Total Cooking Area (square inches)	Cooking Grate	Available Color
Ranch® Kettle	42 H x 37.75 W x 44.75 D	1,104	hinged, stainless steel	black

For further information about these grills, see the specification table in the back of this brochure.

Accessories sold separately.

RANCH® KETTLE

black item: 60020



A Aluminum Dampers

Rust-resistant dampers provide proper airflow for perfect grilling and allow for complete heat control.

B Porcelain-Enamelled Bowl and Lid

Porcelain enamel won't rust or peel, giving your grill years of top performance and shining good looks.

C Stainless Steel Hinged Cooking Grate

This intuitively designed feature lets you easily add/adjust charcoal without lifting the grate or moving your food. That means extended cooking and slow smoking can continue uninterrupted.

D Large Cooking Area

With 1,104 square inches of total cooking area, there's plenty of room.

E Tool Holders

Save space and keep tools within easy reach.

F Tuck-Away™ Lid Holder

Convenient Tuck-Away™ lid holder safely keeps the lid off to the side while you flip your food.

G Ash Catcher

The ash catcher, made of heavy-gauge, porcelain-enamelled steel, lifts out for easy ash disposal and cleaning.



SMOKEY MOUNTAIN COOKER™ SMOKER

For the moistest, juiciest cuts of meat, sometimes low and slow is the way to go.



7471 | Ash Shovel

Ideal for removing ash from the base of your grill and smoker or scooping charcoal right out of the bag.



6664 | Basting Mop

Ideal for vinegar-based sauces. 100% cotton threads retain liquid. Replacement heads available (SKU 6668). Two mop heads included.

EXTERIOR DIMENSIONS AND GRILLING SYSTEM

Smoker	Dimensions (inches)	Total Cooking Area (square inches)	Cooking Grate	Available Color
18.5 inch Smokey Mountain Cooker™ Smoker	41 H x 19 W x 21 D	481	two, plated steel	black
22.5 inch Smokey Mountain Cooker™ Smoker	48.5 H x 23 W x 24 D	726	two, plated steel	black

For further information about these grills, see the specification table in the back of this brochure.

Accessories sold separately.

SMOKEY MOUNTAIN COOKER™ SMOKER

black 18.5 inch item: 721001

black 22.5 inch item: 731001



22.5 inch smoker



18.5 inch smoker



A Built-In Thermometer

A durable, built-in lid thermometer allows you to easily monitor your smoker's temperature.

B Aluminum Dampers

Rust-resistant dampers provide proper airflow for perfect smoking and allow for complete heat control.

C Porcelain-Enamelled Lid, Center Section, and Bowl

Porcelain enamel won't rust or peel, giving your grill years of top performance and shining good looks.

D Rust-Resistant Aluminum Fuel Door

Rust-resistant, aluminum fuel door makes adding fuel easy and convenient.

E Charcoal Chamber

Designed to keep your charcoal in a concentrated area. The charcoal chamber helps keep the charcoal in a uniform shape, helping to control temperature.

F Porcelain-Enamelled Water Pan

Adds steam to the smoking process so meat stays moist and tender.

G Heavy-Duty Cooking Grates

Two plated steel cooking grates provide ample room for smoking ribs and a roast at the same time.

H Premium Cover Included

Heavy-duty cover protects your smoker from the elements.



A



B



E



G





WEBER STYLE™



Weber Style™ Accessories allow you to enjoy the Weber lifestyle. Our premium range of sleek and sophisticated tools and cookware will inspire you to greater grilling success.

WEBER ORIGINAL™



Weber Original™ Accessories provide you with all the great quality, essential tools and cookware that you need, so you get the most out of cooking on your Weber® grill.

WEBER



Weber® Accessories can be trusted to provide you with all the vital accessories and spare parts that you need to cook with confidence and maintain the long life of your favorite grill.



TOOLS AND COOKWARE



6408 Poultry Roaster



6430 Pizza Stone



6431 Stainless Steel Charcoal Grill Tool Holder



6432 Silicone Basting Brush

FITS PORTABLE GRILLS



6481 Small Stainless Steel Vegetable Basket



6434 Stainless Steel Vegetable Basket



6435 Stainless Steel Grill Pan



6436 Stainless Steel Roast Holder



6437 Four-Piece Stainless Steel Skewer Set



6441 Stainless Steel Chef's Tongs

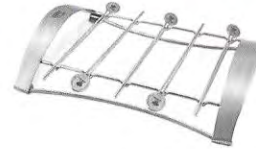


6445 Three-Piece Stainless Steel Tool Set



6446 Stainless Steel Fish Turner

TOOLS AND COOKWARE



6449 Stainless Steel Kabob Set



6453 Stainless Steel Rib Rack



6466 Plancha



6452 Barbecue Apron



6457 Barbecue Mitt



BARBECUE TOOLS

USE WITH PORTABLE GRILLS



6645 Stainless Steel Two-Piece Portable Tool Set



6610 Stainless Steel Locking Barbecue Tongs



6615 Stainless Steel Fork



6620 Stainless Steel Spatula



6625 Stainless Steel Two-Piece Barbecue Tool Set



6630 Stainless Steel Three-Piece Barbecue Tool Set



6650 Stainless Steel Sausage Tongs



6655 Stainless Steel Pincer Tongs



6468 Wok Tool Set



6661 Silicone Basting Brush



6664 Basting Mop
6668 Basting Mop Replacement Heads



6673 Stainless Steel Wide Spatula

BARBECUE TOOLS



6671 Stainless Steel Spatula



6672 Stainless Steel Locking Barbecue Tongs



6515 Weber® Q® Two-Piece Stainless Steel Tool Set



6491 Pocket Thermometer



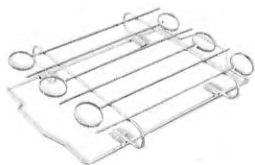
6492 Instant-Read Thermometer



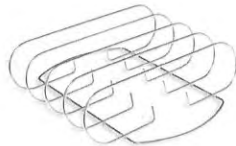
6496 Mechanical Timer



COOKWARE



6405 Kabob Set



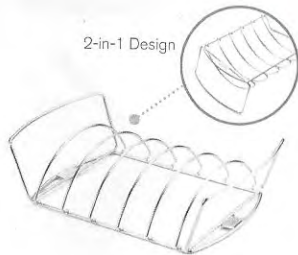
6406 Rib Rack

FITS PORTABLE GRILLS



6429 Small Roast Holder

2-in-1 Design



6469 Rib and Roast Holder

FITS PORTABLE GRILLS



6470 Small Stainless Steel Fish Basket



6471 Large Stainless Steel Fish Basket



6482 Poultry Roaster



6486 Meatball/Slider Rack

FITS PORTABLE GRILLS



6677 Stainless Steel Grill Pan-Medium



6678 Stainless Steel Grill Pan-Large



6485 Slider Press



6483 Burger Press

COOKWARE



6479 Grill Press



7576 Stainless Steel Smoker Box



6488 Potato Nails



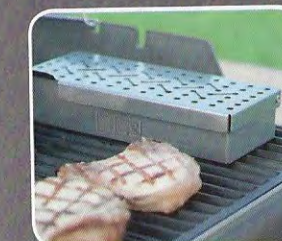
6489 Corn Picks



6409 Salt and Pepper Shakers



6427 Grill Out® Table Light





The Gourmet BBQ System™ takes grilling to a new level. Unique inserts expand cooking possibilities by delivering professionally seared steaks and chops on the sear grate, delicious breakfast in the griddle, spicy stir-frys and soups in the wok, and even crispy pizzas on the cordierite pizza stone. This system delivers the ultimate experience for grilling fanatics!

GRATE INSETS AND SETS



8835 Hinged Cooking Grate
Fits 22.5 inch charcoal grills



7420 Sear Grate Set
Fits 22.5 inch charcoal grills



8833 Griddle Grate Set
Fits 22.5 inch charcoal grills



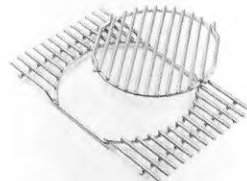
7586 Stainless Steel Gas Grill
Cooking Grates
Fits Spirit® 300™ series gas grills



7587 Stainless Steel Gas Grill
Cooking Grates
Fits Genesis® 300™ series gas grills



7588 Stainless Steel Gas Grill
Cooking Grate
Fits Summit® 400™ series gas grills



7585 Stainless Steel Gas Grill
Cooking Grate
Fits Summit® 600™ series gas grills

COOKWARE



7421 Griddle



7422 Wok



8834 Sear Grate



8836 Pizza Stone with Carry Rack



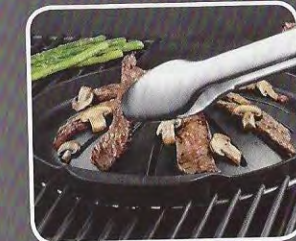
8838 Poultry Roaster



8840 Korean Barbecue



8841 Ebelskiver





ACCESSORIES

COVER

Please visit www.weber.com® for more covers.



Weber® Q® Grill Cover
6550 100 series
6551 200 series



6554 Weber® Q® Premium Cover
Fits Weber® Q® grills when they are used
with the Weber® Q® rolling cart (6549)



Weber® Q® Premium Cover
6552 200 series
6553 300 series



7569 Premium Gas Grill Cover
Fits Spirit® 200™ and 300™ series gas grills



7553 Premium Gas Grill Cover
Fits Genesis® 300™ series gas grills



Premium Gas Grill Cover
7554 Summit® 400™ series
7555 Summit® 600™ series



7549 Premium Cover
Fits Genesis® 300™ series gas grills
with Genesis® island cabinetry



6555 Smokey Joe® Bag
Fits Smokey Joe® Silver and
Gold charcoal grills



Standard Cover
7450 18.5 inch
7451 22.5 inch



Premium Cover
7452 18.5 inch | 7453 22.5 inch
7574 26.75 inch



7449 Premium Cover
Fits Performer® Silver
charcoal grills



7455 Premium Cover
Fits Performer® Gold and
Platinum charcoal grills

CLEAN



Bamboo Grill Brush**
6463 12 inch | 6464 18 inch



Three-Sided Grill Brush**
6494 12 inch | 6493 21 inch



6495 Cast-Iron Grill Brush**

**Replace brush if any loose bristles are found on cooking grates or brush.

WEAR



6401 Barbecue Mitt



6474 Apron
black



6475 Apron and Towel Set
black



6476 Apron
red



6477 Apron and Towel Set
red



Premium Gloves
6669 S/M
6670 L/XL





ACCESSORIES

DRIP PANS



6415 Drip Pan
10 pans per pack
8.625" W x 6" L x 1.5" H



6416 Drip Pan
10 pans per pack
9.125" W x 13.125" L x 2" H



6454 Drip Pan
5 pans per pack
8.5" W x 16.5" L x 1.75" H



6417 Summit® Grill Drip Pan
10 pans per pack
5" W x 11" L x 2.5" H

FIRESPICE® COOKING WOODS



17004 Chips
17005 Chunks
17912 Smoker Tray



17914 Smoker Tray



17006 Chips
17007 Chunks
17911 Smoker Tray



17053 Chips
17056 Chunks
17904 Smoker Tray



17103 Chips
17106 Chunks
17910 Smoker Tray



17002 Chips
17003 Chunks
17913 Smoker Tray

Firespice® Trial Size Kits

- 17901** (4) One of each: hickory, cherry, apple, and beech
- 17902** (4) One of each: mesquite, cherry, apple, and beech
- 17903** (6) One of each: hickory, mesquite, cherry, apple, pecan, and beech



17302 Firespice™ Cedar Planks

WEBER® Q® GRILL

Please visit www.weber.com for specific accessory part numbers.



6501 Weber® Q® Adapter Hose



6508 Weber® Q® Stationary Cart



6549 Weber® Q® Rolling Cart



6512 Weber® Q® Warming Rack



7581 Weber® Q® Replacement Thermometer



Weber® Q® Porcelain-Enameled, Cast-Iron Cooking Grate*



Weber® Q® Griddle
6504 100 series | **6505** 200 series
6506 300 series



6604 Portable Griddle



Grill Out® Handle Light
6503 100/200 series
7580 300 series





CHARCOAL GRILL

Please visit www.weber.com for specific accessory part numbers.



7401 Tool Holder



7402 Charcoal Rails



7403 Char-Basket™ Charcoal Fuel Holders



7413 Work Table
(charcoal grill not included)



7416 Rapidfire® Chimney Starter



7417 Lighter Cubes



2290 Kettle Rotisserie

FITS PORTABLE GRILLS



7445 Portable Charcoal Table
(charcoal grill not included)

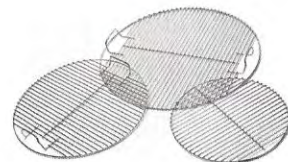
USE WITH PORTABLE GRILLS



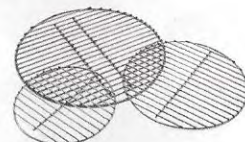
7447 Compact Rapidfire® Chimney Starter



7471 Ash Shovel



Cooking Grates*



Charcoal Grates*

GAS GRILL

Please visit www.weber.com for specific accessory part numbers.



Gas Grill Rotisserie*



7575 Genesis® Smoker
Fits Genesis® 300™ series gas grills
(front-mounted control panel models)



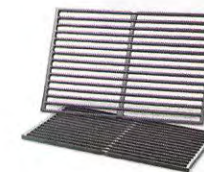
7563 Genesis® Smoker
Fits Genesis® 300™ series gas grills
(front-mounted control panel models)



7541 Genesis® Smoker
(does not fit front-mounted control panel models)



FLAVORIZER® BARS*



Cooking Grates*



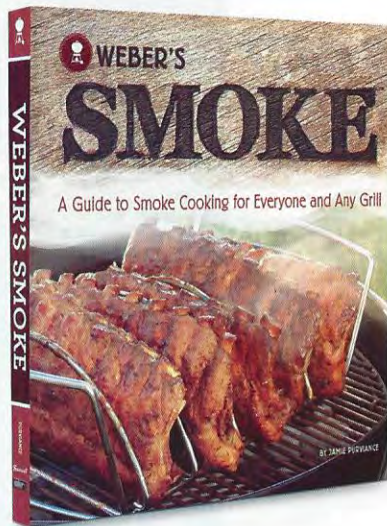
Reverse Side
Porcelain-Enameled, Cast-Iron Griddle*



7516 Grill Out® Handle Light



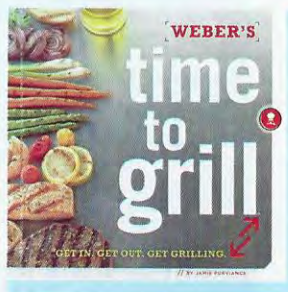
COOKBOOKS



NEW Weber's Smoke™

Weber's Smoke™ unveils the secrets behind creating rich, smoky flavor on any grill. From classics such as Best-on-the-Block Baby Back Ribs to innovative Homemade Duck and Cherry Sausages, you'll get a taste of everything smoke cooking has to offer. So whether you have 8 short minutes, or 8 laid-back hours, you can achieve mouthwatering results every time.

Soft cover; 192 pages | ISBN 13: 978-0-376-02067-3

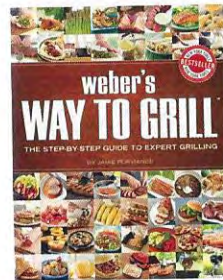


Weber's Time To Grill™

Weber's Time to Grill™ cookbook meets the challenge of helping grillers who do not have much time to grill with recipes that can be cooked in 30 minutes or less. The book contains more than 200 recipes that go from easy to adventurous, and features over 200 full-color recipe photographs—plus additional photography throughout. It also includes a beginner's grilling course covering Weber's top ten techniques. Free mobile tools at timetogrill.mobi.

Soft cover; 304 pages | ISBN 13: 978-0-376-02060-4

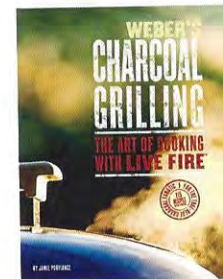
COOKBOOKS



Weber's Way to Grill™: The Step-by-Step Guide to Expert Grilling

The most complete grilling technique book ever. With over 160 fabulous new recipes and more than 1,100 photographs, you'll find plenty of inspiration and instruction to set it up at the grill. Explore new grilling methods and learn the tips and tricks professional chefs use to create legendary meals. Each chapter includes step-by-step instructions and photography for essential techniques.

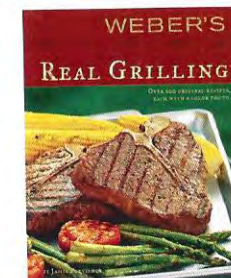
Soft cover; 320 pages | ISBN 13: 978-0-376-02059-8



Weber's Charcoal Grilling: The Art of Cooking with Live Fire™

The inventor of the first covered charcoal grill presents the definitive cookbook on charcoal grilling. The book takes readers through the full range of a charcoal grill's versatility and is laced with "live fire wisdom" collected from chefs, barbecue champions, and charcoal fanatics. If you've ever felt a fascination with live-fire cooking, this is the book for you. A full-color photograph accompanies each of the 115 recipes. Includes a page of note cards.

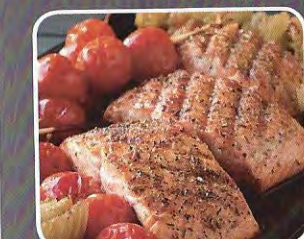
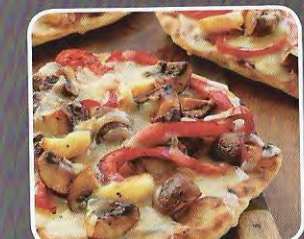
Soft cover; 256 pages | ISBN 13: 978-0-376-02047-5



Weber's Real Grilling™

With over one million copies sold, this is one of Weber's best cookbooks. It's all about easy, exciting, and absolutely delicious food. You will find many of the ingredients for the 200+ recipes in a well-stocked supermarket, and a full-color photo of each recipe shows you how the food will look. It's the go-to guide for all things grilled.

Soft cover; 304 pages | ISBN 13: 978-0-376-02046-8





2013 WEBER® Q® GRILLS



WEBER® Q®

	Q® 140	Q® 240	Q® 100	Q® 120	Q® 200	Q® 220	Q® 300	Q® 320
COOKING SYSTEM								
Stainless steel burner(s)			1	1	1	1	2	2
Porcelain-enameled, cast-iron cooking grate(s)	2	2	1	1	1	1	2	2
Main burners: BTU-per-hour input			8,500	8,500	12,000	12,000	21,700	21,700
Watts/Volts	1560 / 120	1560 / 120						
Infinite heat control settings	*	*						
Infinite control burner valve(s)			*	*	*	*	*	*
Push button ignition system			*	*	*	*	*	*
Electronic ignition system				*		*		*
Hose and regulator for 20-lb LP tank							*	*
COOKING AREA								
Primary cooking area (square inches)								393
Warming rack area (square inches)								69
Total cooking area (square inches)	189	280	189	189	280	280	393	462
CONSTRUCTION								
Cast aluminum lid and body	*	*	*	*	*	*	*	*
Glass-reinforced nylon frame	*	*	*	*	*	*	*	*
Two folding work tables with tool hooks								*
Two removable folding work tables with tool hooks								*
Removable catch pan	*	*	*	*	*	*	*	*
Built-in lid thermometer			*	*	*	*	*	*
Aluminum heat retention liner	*	*						*
Stationary cart							*	*
FEATURES								
Grill Out® handle light								1
Weber® Q® recipe booklet			*	*	*	*	*	*
Limited warranty	*	*	*	*	*	*	*	*
FUEL								
14.1 or 16.4 oz. LP cylinder (sold separately)			*	*	*	*	*	*
Liquid propane (20 lb LP tank sold separately)							*	*
6-foot grounded electrical cord	*	*						
COLOR/ITEM								
Painted, cast aluminum lid finish	*	*	*	*	*	*	*	*
Titanium			386002	516501	396002	566002	426001	586002
Dark gray	522001	592001						
DIMENSIONS (LID OPEN, TABLES OUT)								
Height (inches)	23.5	26	23.5	24.6	26	26	55.5	55.5
Width (inches)	27	31.5	27	40.9	51.4	51.4	50.2	50.2
Depth (inches)	20.5	25.1	20.5	20.5	24.3	25.1	30	30



2013 SPIRIT® GAS GRILLS



SPIRIT®

	E-210™	E-220™	S-210™	E-310™	E-320™
COOKING SYSTEM					
Stainless steel burners	2	2	2	3	3
Porcelain-enameled, cast-iron cooking grates	*	*	*	*	*
7 mm diameter stainless steel rod cooking grates	*	*	*	*	*
Porcelain-enameled Flavorizer® bars					
Main burners: BTU-per-hour input	26,500	26,500	26,500	32,000	32,000
Side burner: BTU-per-hour input		12,000			12,000
Electronic Crossover® ignition system	*	*	*	*	*
COOKING AREA					
Primary cooking area (square inches)	360	360	360	424	424
Warming rack area (square inches)	90	90	90	105	105
Total cooking area (square inches)	450	450	450	529	529
CONSTRUCTION					
Porcelain-enameled shroud with center-mounted thermometer	*	*	*	*	*
Stainless steel shroud with center-mounted thermometer					
Stainless steel fold-down tables	2		2		
Stainless steel work surfaces	2	2	2	2	2
Front-mounted control panel	*	*	*	*	*
Painted enclosed steel cabinet with painted steel door		*		*	*
Painted enclosed steel cabinet with stainless steel door			*		
Side-mounted condiment rack				*	*
Front access, porcelain-enameled grease tray with catch pan	*	*	*	*	*
Heavy-duty front locking swivel casters	2	2	2	2	2
Heavy-duty back swivel casters	2	2	2	2	2
FEATURES					
Fuel gauge (LP models only)	*	*	*	*	*
Tool hooks	6	6	6	6	6
Owner's guide and grilling guide	*	*	*	*	*
Limited warranty	*	*	*	*	*
FUEL					
Natural gas (10-foot flexible hose included)			*	*	*
Liquid propane (20-lb LP tank sold separately)	*	*	*	*	*
LID FINISH					
Porcelain-enameled steel	*	*	*	*	*
Stainless steel				*	*
COLOR/ITEM					
Black (LP)	46110001	46310001		46510001	46710001
Black (NG)				47510001	
Stainless steel (LP)			46100001		
Stainless steel (NG)			47100001		
DIMENSIONS (LID OPEN)					
Height (inches)	63	63	63	63	63
Width (inches)	50	48	50	52	52
Depth (inches)	32	32	32	32	32



2013 GENESIS® GAS GRILLS



	GENESIS®			
	E-310™	E-330™	S-310™	S-330™
COOKING SYSTEM				
Stainless steel burners	3	3	3	3
Porcelain-enameled, cast-iron cooking grates	•	•	•	•
7 mm diameter stainless steel rod cooking grates	•	•	•	•
Porcelain-enameled Flavorizer® bars	•	•	•	•
Stainless steel Flavorizer® bars	•	•	•	•
Main burners: BTU-per-hour input	38,000	38,000	38,000	38,000
Side burner: BTU-per-hour input	•	12,000	•	12,000
Sear Station® burner: BTU-per-hour input	•	10,000	•	10,000
Individual electronic ignition system	•	•	•	•
COOKING AREA				
Primary cooking area (square inches)	507	507	507	507
Warming rack area (square inches)	130	130	130	130
Total cooking area (square inches)	637	637	637	637
CONSTRUCTION				
Porcelain-enameled shroud with center-mounted thermometer	•	•	•	•
Stainless steel shroud with center-mounted thermometer	•	•	•	•
Stainless steel work surfaces	2	2	2	2
Front-mounted control panel	•	•	•	•
Painted enclosed steel cabinet with painted steel doors and stainless steel handles	•	•	•	•
Painted enclosed steel cabinet with stainless steel doors and stainless steel handles	•	•	•	•
Front access, porcelain-enameled grease tray with catch pan	•	•	•	•
Porcelain-enameled heat deflectors	•	•	•	•
Heavy-duty front locking swivel casters	2	2	2	2
Heavy-duty back swivel casters	2	2	2	2
FEATURES				
Fuel gauge (LP models only)	•	•	•	•
Tool hooks	6	6	6	6
Owner's guide and grilling guide	•	•	•	•
Limited warranty	•	•	•	•
FUEL				
Natural gas (10-foot flexible hose included)	•	•	•	•
Liquid propane (20-lb LP tank sold separately)	•	•	•	•
LID FINISH/COLOR/ITEM				
Porcelain-enameled steel	•	•	•	•
Stainless steel				
Black (LP)	6511001	6531001		
Black (NG)	6611001	6631001		
Copper (LP)	6512001	6532001		
Green (LP)	6517001	6537001		
Stainless steel (LP)			6550001	6570001
Stainless steel (NG)			6650001	6670001
DIMENSIONS (LID OPEN)				
Height (inches)	64.5	64.5	64.5	64.5
Width (inches)	60	60	60	60
Depth (inches)	30	30	30	30



2013 SUMMIT® GAS GRILLS



	SUMMIT®							
	E-420™	E-470™	E-620™	E-670™	S-420™	S-470™	S-620™	S-670™
COOKING SYSTEM								
Stainless steel burners	4	4	6	6	4	4	6	6
9 mm diameter stainless steel rod cooking grates	•	•	•	•	•	•	•	•
Stainless steel Flavorizer® bars	•	•	•	•	•	•	•	•
Main burners: BTU-per-hour input	48,800	48,800	60,000	60,000	48,800	48,800	60,000	60,000
Side burner: BTU-per-hour input	12,000	12,000	12,000	12,000	12,000	12,000	12,000	12,000
Sear Station® burner: BTU-per-hour input	•	10,600	•	10,600	•	10,600	•	10,600
Smoker burner: BTU-per-hour input	•	6,800	•	6,800	•	6,800	•	6,800
Rear-mounted infrared rotisserie burner: BTU-per-hour input	•	10,600	•	10,600	•	10,600	•	10,600
Tuck-Away™ rotisserie system with flip-up motor and separate spit and fork storage in the enclosed cart	•	•	•	•	•	•	•	•
Snap-Jet™ individual burner ignition system	•	•	•	•	•	•	•	•
COOKING AREA								
Primary cooking area (square inches)	538	468	693	624	538	468	693	624
Warming rack area (square inches)	112	112	145	145	112	112	145	145
Total cooking area (square inches)	650	580	838	769	650	580	838	769
CONSTRUCTION								
Porcelain-enameled shroud with center-mounted thermometer	•	•	•	•	•	•	•	•
Stainless steel shroud with center-mounted thermometer	•	•	•	•	•	•	•	•
Stainless steel side tables with painted aluminum end caps	2	2	2	2	2	2	2	2
Painted enclosed cart with painted steel doors and chrome-plated aluminum handles	•	•	•	•	•	•	•	•
Painted enclosed cart with stainless steel doors and chrome-plated aluminum handles	•	•	•	•	•	•	•	•
Front access, stainless steel grease tray with catch pan	•	•	•	•	•	•	•	•
Heavy-duty front locking swivel casters	2	2	2	2	2	2	2	2
Heavy-duty back swivel casters	2	2	2	2	2	2	2	2
FEATURES								
Backlit LED tank scale display (LP models only)	•	•	•	•	•	•	•	•
Grill Out® handle light(s)	1	1	2	2	1	1	2	2
Lighted control knobs	•	•	•	•	•	•	•	•
Tool hooks	6	6	6	6	6	6	6	6
Owner's guide and grilling guide	•	•	•	•	•	•	•	•
Limited warranty	•	•	•	•	•	•	•	•
FUEL								
Natural gas (10-foot flexible hose included)	•	•	•	•	•	•	•	•
Liquid propane (20-lb LP tank sold separately)	•	•	•	•	•	•	•	•
LID FINISH/COLOR/ITEM								
Porcelain-enameled steel	•	•	•	•	•	•	•	•
Stainless steel								
Black (LP)	7121001	7171001	7321001	7371001				
Black (NG)	7221001	7271001	7421001	7471001				
Stainless steel (LP)					7120001	7170001	7320001	7370001
Stainless steel (NG)					7220001	7270001	7420001	7470001
DIMENSIONS (LID OPEN)								
Height (inches)	57.1	57.1	57.1	57.1	57.1	57.1	57.1	57.1
Width (inches)	66	66	74.1	74.1	66	66	74.1	74.1
Depth (inches)	30	30	30	30	30	30	30	30



2013 PORTABLE GRILLS



	SMOKEY JOE®			GO-ANYWHERE®	
	Silver	Gold	Jumbo Joe®	Charcoal	Gas
COOKING SYSTEM					
Porcelain-enameled bowl and lid	•	•	•	•	•
Plated steel cooking grate	•	•	•	•	•
Steel charcoal grate	•	•	•	•	
Stainless steel burner					1
Heat distribution plate					•
Push button igniter					•
COOKING AREA					
Total cooking area (square inches)	147	147	240	160	160
CONSTRUCTION					
Rust-resistant damper(s)	2	1	2	2	
Glass-reinforced nylon handle	1	1	1	1	1
Tuck-N-Carry® lid lock/lid holder			•		
Plated steel legs pivot to lock lid in place for carrying				•	•
FEATURES					
Uses disposable 14.1 oz. LP cylinders (not included)					•
Owner's guide	•	•	•	•	•
Limited warranty	•	•	•	•	•
COLOR/ITEM					
Black	10020	40020	1211001	121020	1520
DIMENSIONS					
Height (inches)	17	17	19.75	14.5	14.5
Width (inches)	14.25	14.25	20.5	21	21
Depth (inches)	14.5	16.5	19.75	12.25	12.25



2013 CHARCOAL GRILLS



	ONE-TOUCH®				PERFORMER®			OTHER	SMOKEY MOUNTAIN COOKER™ SMOKER	
	18.5 inch Silver	22.5 inch Silver	22.5 inch Gold	26.75 inch Gold	Silver	Gold	Platinum	Ranch® Kettle	18.5 inch Smoker	22.5 inch Smoker
COOKING SYSTEM										
Porcelain-enameled bowl and lid	•	•	•	•	•	•	•	•	•	•
Plated steel cooking grate	•	•	•	•	•	•	•	•	2	2
Plated steel hinged cooking grate			•	•	•	•	•	•		
Stainless steel hinged cooking grate				•				•		
Steel charcoal grate	•	•	•	•	•	•	•	•	•	•
Porcelain-enameled water pan and charcoal chamber									•	•
Electronic Touch-N-Go™ gas ignition system							•			
COOKING AREA										
Total cooking area (square inches)	240	363	363	508	363	363	363	1,104	481	726
CONSTRUCTION										
Heavy-duty steel cart frame					•	•	•	•		
Fold-down table					•	•	•	•		
Thermoset work table										
One-Touch™ cleaning system	•	•	•	•	•	•	•	•		
Aluminum ash catcher	•	•								
Removable, high-capacity aluminum ash catcher			•	•	•	•	•	•		
Wire bottom shelf										
Weather-protected CharBin™ storage container								•		
Rust-resistant damper(s)	1	1	1	1	1	1	1	4	4	4
Glass-reinforced nylon lid handle	1	1	1	1	1	1	1	2	1	2
Glass-reinforced nylon bowl handle	1	1								
Glass-reinforced nylon handle with tool hooks			2	1						
Durable all-weather wheels	2	2	2							
Durable all-weather wheels with full wheel hubs				2	2	2	2	2		
Locking casters					2	2	2	2		
FEATURES										
Built-in lid thermometer			•	•	•	•	•	•		•
Removable LCD cook timer										
Char-Basket™ charcoal fuel holders				2		2	2			
Tool hooks					3	3	3	3		
Tuck-Away™ lid holder				•	•	•	•	•		
Rust-resistant aluminum fuel door										
Premium-grade cover included										
Owner's guide	•	•	•	•	•	•	•	•	•	•
Limited warranty	•	•	•	•	•	•	•	•	•	•
COLOR/ITEM										
Black	441001	741001	1351001	781001	1401001	1431001	1481001	60020	721001	731001
Brick red							1484001			
Dark blue			1358001				1438001	1488001		
Green			1357001				1437001	1487001		
DIMENSIONS										
Height (inches)	35	38.5	38.5	42.3	42	40	40	42	41	48.5
Width (inches)	23	25	27	32	39	50.25	50.25	37.75	19	23
Depth (inches)	18.5	22.5	22.5	24.4	28.5	28.5	28.5	44.75	21	24

THE ALL-NEW WEBER® APP FOR IPHONE



Weber® Grills App

Get ready to get inspired! Our new grilling app makes it easy. Browse the latest and greatest new Weber® products and check what's going on with the new Weber Nation grilling community. Each week, a new and original grilling recipe will be delivered to your device and added to the app's recipe collection of more than 75 mouthwatering classics. Sort them, save them, or share them. As an added bonus, the app comes with lots of step-by-step instruction for upping your game at the grill.

And did we mention it's FREE?



Customer Service: 1-800-446-1071

Designed and Engineered by Weber in Palatine, Illinois, USA

©2012 Weber-Stephen Products LLC. Weber, the kettle configuration, , Genesis, Bar-B-Kettle, Crossover, Flavorizer, Summit, Spirit, One-Touch, Smokey Joe, Jumbo Joe, Go-Anywhere, Platinum, Performer, Ranch, Rapidfire, , Q, Grill Out, Firespice, Tuck-N-Carry, Sear Station and www.weber.com are registered U.S. trademarks; Q 100, Q 120, Q 140, Q 200, Q 220, Q 240, Q 300, Q 320, E-210, E-220, E-300, E-310, E-320, E-330, E-400, E-420, E-470, E-600, E-620, E-670, EP-310, EP-330, S-210, S-300, S-310, S-330, S-420, S-460, S-470, S-600, S-620, S-660, S-670, SP-310, SP-320, SlideFrame, One-Touch Cleaning System, Tuck-Away, Char-Basket, Touch-N-Go, Charbin, Smokey Mountain Cooker, Weber Style, Weber Original, Westerner, Ranger, Wishing Well, Seville, Imperial Sequoia, Galley-Que, Flamenco, Penthouse, Barrel Bar-B-Q, Weber's Original OGS logo, Flavorizer logo, Time to Grill, Way to Grill, Real Grilling, Charcoal Grilling: The Art of Cooking With Live Fire, Weber Smoke, Baby Q, Char-Q, Gourmet BBQ System, and Snap-Jet are U.S. trademarks; all of Weber-Stephen Products LLC, 200 East Daniels Road, Palatine, Illinois 60067 USA.





WWW.WEBER.COM®

CUSTOMER SERVICE 1-800-446-1071

STYLE MATERNITY BUY BE W GRILL
EVERY SENSORS TEMPERATURE HEAT